

BUNCOMBE COUNTY & CITY OF ASHEVILLE

PARTNERSHIP MEETING

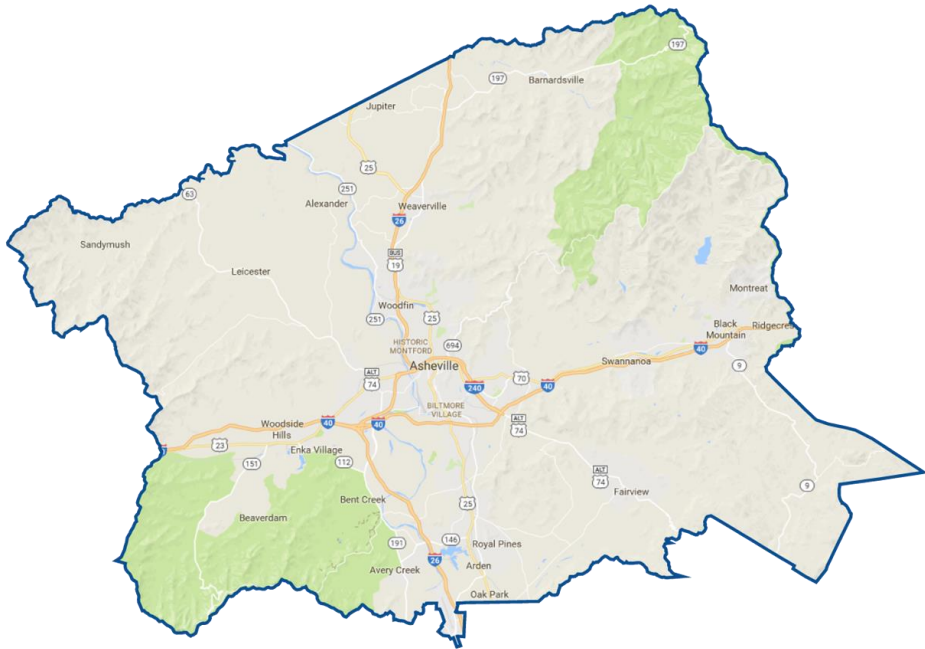
March 13, 2018

AGENDA



- Strategic Priorities
 - Chairman Brownie Newman
 - Mayor Esther Manheimer
- Current Partnerships
 - Mandy Stone, County Manager
 - Gary Jackson, City Manager
- Potential Future Partnerships
 - Mandy Stone, County Manager
 - Gary Jackson, City Manager





Buncombe County
Board of Commissioners
www.BuncombeCounty.org/Commissioners

STRATEGIC PRIORITIES



Affordable Housing



Diverse Community Workforce



Early Childhood Education



Justice Resource Support



Opioid Addiction



Renewable Energy



ASHEVILLE CITY COUNCIL



ASHEVILLE CITY COUNCIL STRATEGIC PRIORITIES



**EQUITABLE
& DIVERSE
COMMUNITY**

**TRANSPORTATION
AND ACCESSIBILITY**

**THRIVING
LOCAL
ECONOMY**

**CONNECTED
AND ENGAGED
COMMUNITY**



CITY COUNCIL VISION

**WELL-PLANNED
AND LIVABLE
COMMUNITY**

**CLEAN AND
HEALTHY
ENVIRONMENT**

**QUALITY,
AFFORDABLE
HOUSING**

**FINANCIALLY
RESILIENT
CITY**

CURRENT PARTNERSHIPS, INITIATIVES, AND PROJECTS



CAPITAL PROJECTS

EQUITY EFFORTS

CARBON REDUCTION/CLEAN ENERGY

AFFORDABLE HOUSING

PARKING COORDINATION



Downtown Parking

- Active Coordination Between County and City
- Sharing Space Information for Mobile Parking Apps
- Consistency in Signage
- Partnership with City and Explore Asheville
- Total County Parking Impact Downtown = 1,798 Spaces Available



SOUTH SLOPE PARKING



Coxe Avenue Parking Deck

- 664 Spaces Available
- Parking Available 24/7/365
- Opened February 23rd
- Hourly Parking
- Month to Month Parking
- Free to HHS Consumers

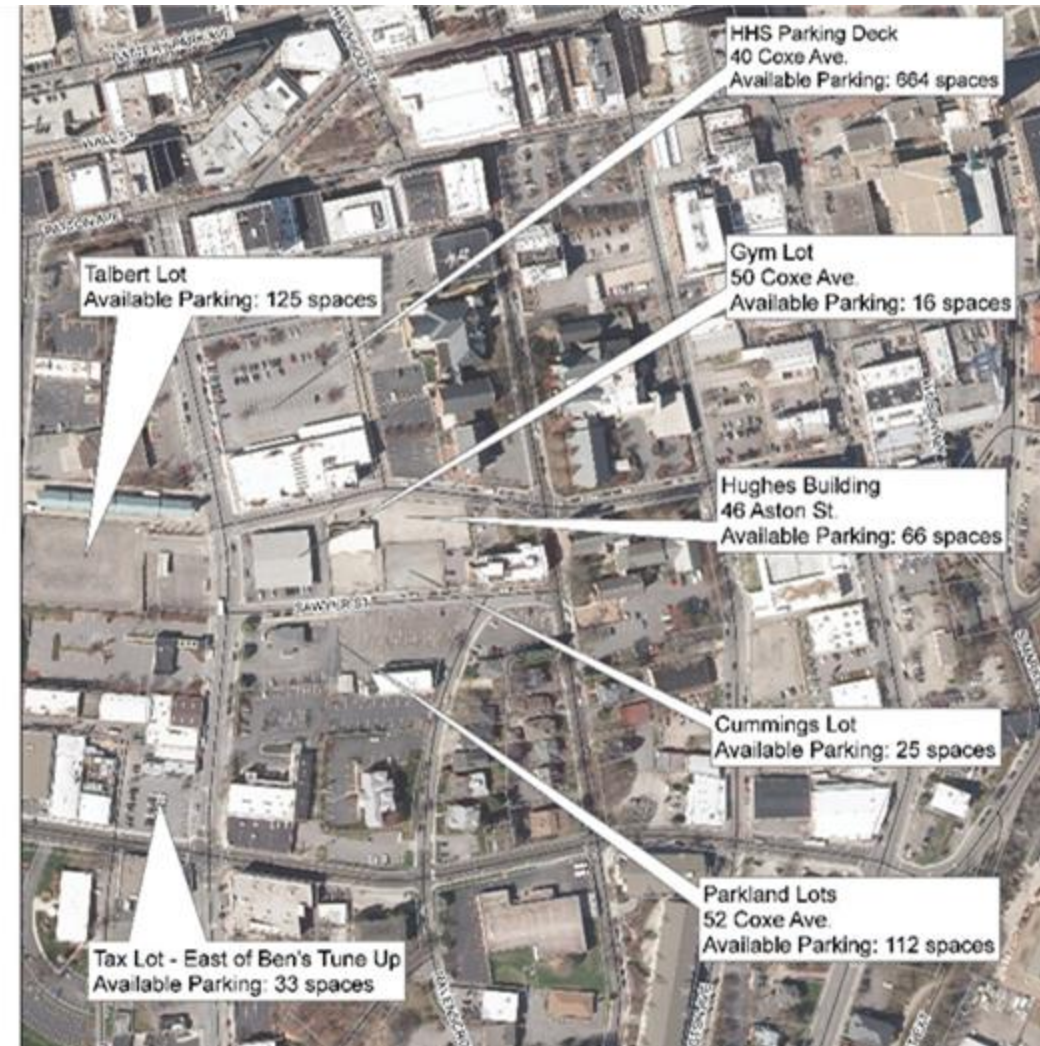


SOUTH SLOPE PARKING



Surface Parking

- 344 New Surface Parking Spaces Available 24/7/365
- 33 Surface Parking Spaces Available Nights, Weekends, Holidays (Tax Lot)



DOWNTOWN PARKING

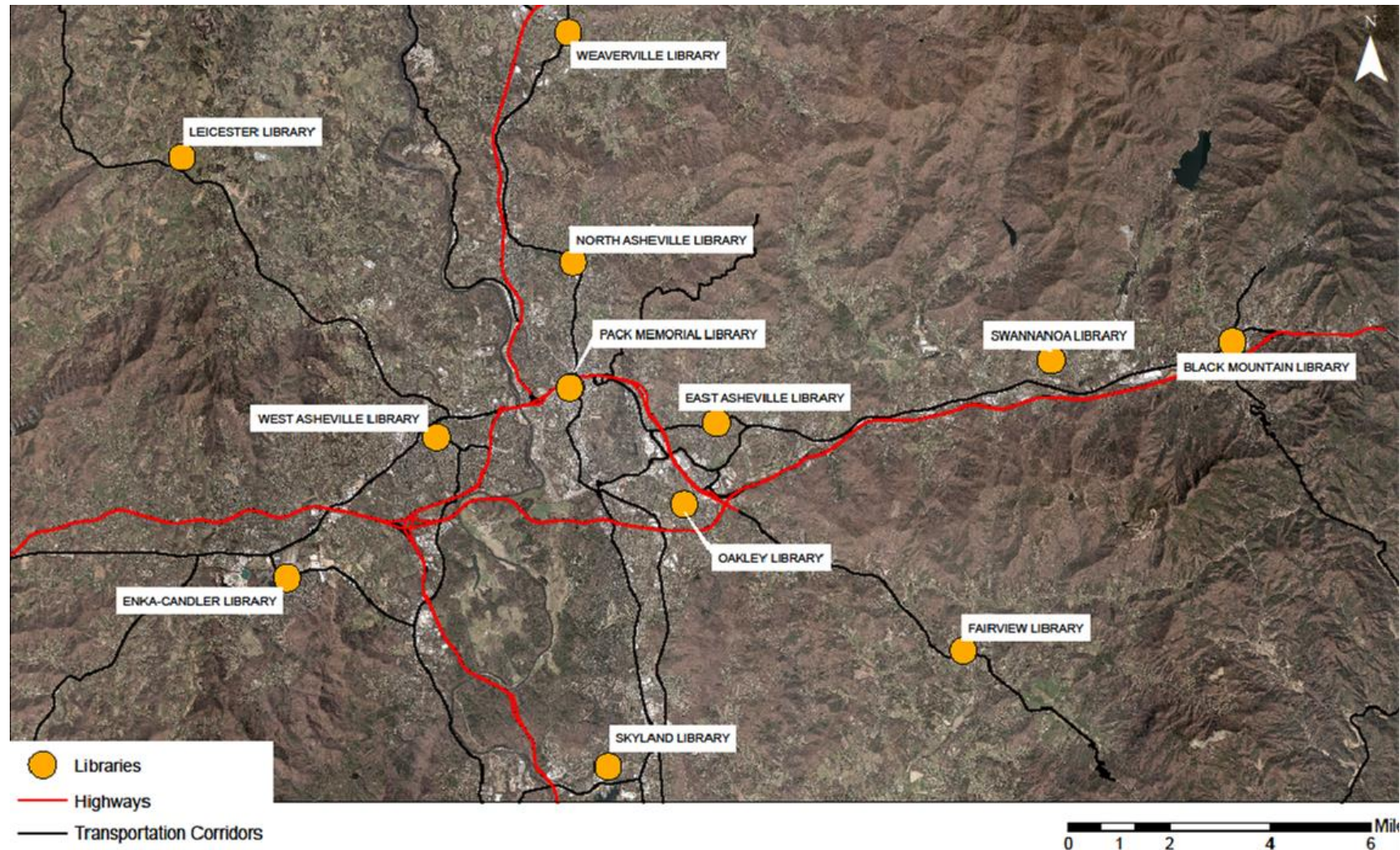


Additional County Parking

- College Street Parking Deck = 650 Spaces
- Family Justice Center Parking = 107 Spaces
- Both Available for Hourly and Monthly Parking



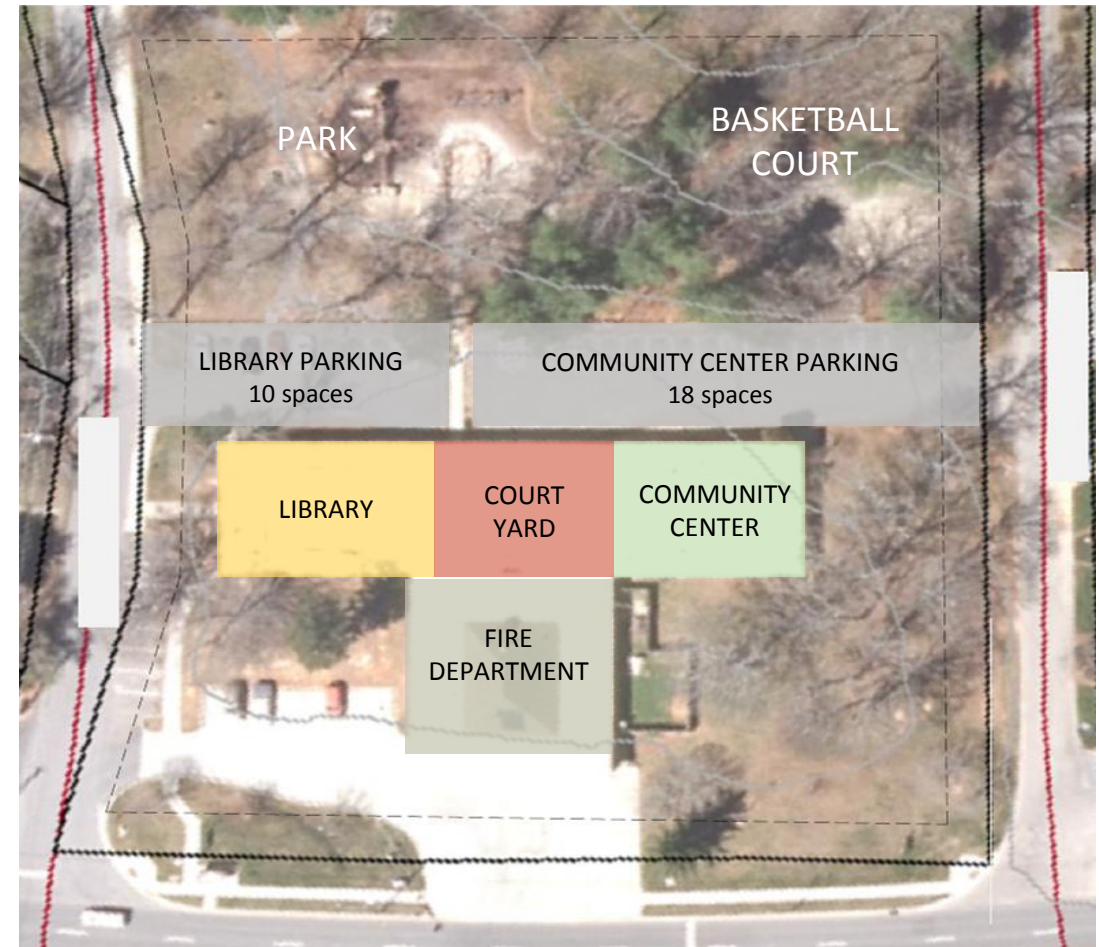
BUNCOMBE COUNTY LIBRARY SYSTEM



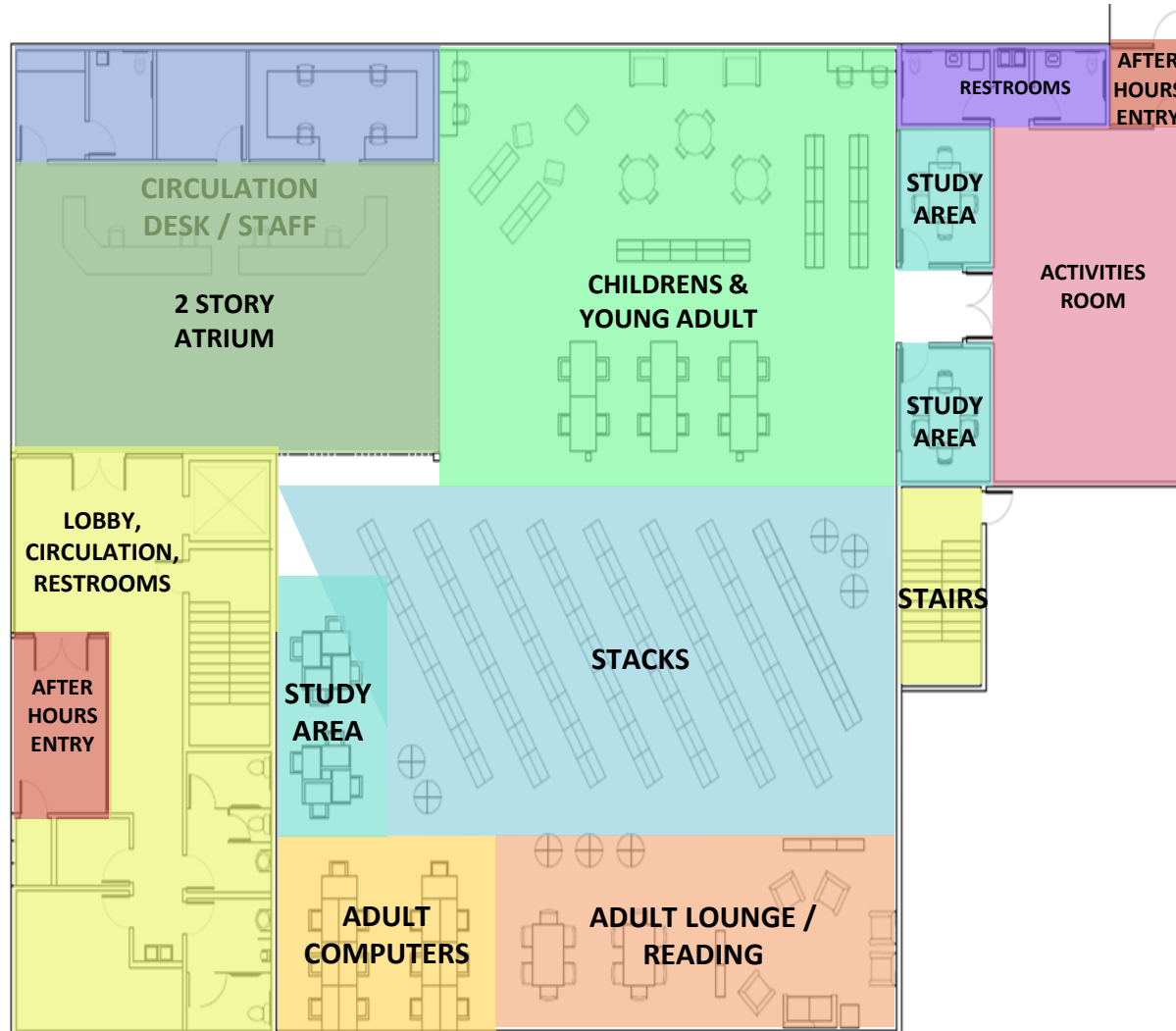
EAST ASHEVILLE LIBRARY



- Community Listening Sessions
- Design Discussions In Progress
- Strong City/County Partnership
- Long-Term Lease
- Construction Begins December 2018
- Completion Fall 2019



EAST ASHEVILLE LIBRARY - 15,000 SF



OPIOID RESPONSE



Planning & Coordination

- Painkiller Task Force
- WNC Regional Substance Use Alliance

Treatment

- Drug Court
- Medication Assisted Therapies
- Harm Reduction & Overdose Response

Prevention & Community Engagement

- Public Education Campaign
- Town Halls
- Speakers Bureau
- Youth Summit

Law Enforcement

- Drug Take-Backs
- BCAT Anticrime Taskforce
- Public Nuisance Lawsuit



Addiction is...
**CLOSER THAN
YOU THINK.**

EQUITY EFFORTS



- **Mining local data – open to the public**
 - State of Black Asheville
 - Regular reports from SYNEVA Economics
- **Tipping our community toward greater diversity**
 - WNC Diversity Engagement Coalition
 - City/County Ally Group for professionals of color



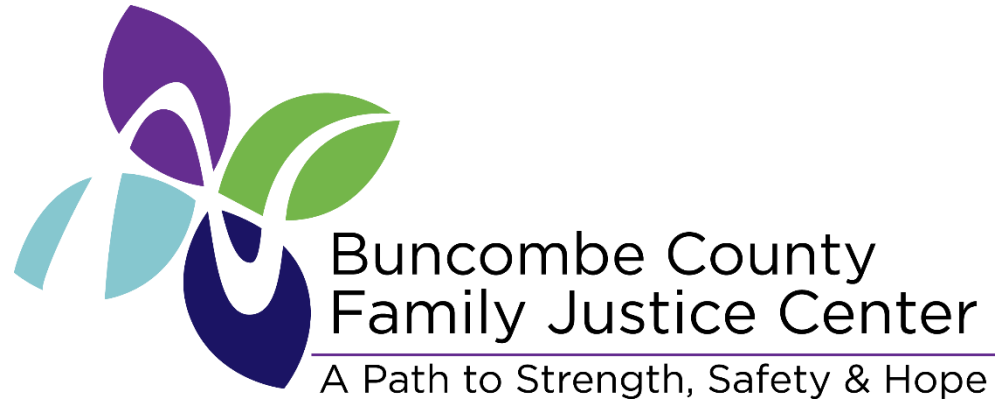
- **Creating educational and economic pipelines**
 - Community Engagement Team as community liaison for – Isaac Coleman Investment Grants, Tipping Point Grants, and other partnerships
 - Economic:
 - Diversity Supplier Network
 - Mountain Community Capital Fund (Small Business Loans)
 - Educational:
 - CAYLA Youth Development Program
 - Partnerships for Early Childhood Education
- **Preserving cultural past and supporting cultural identity**
 - African American Heritage Commission & Historic Markers Art Project



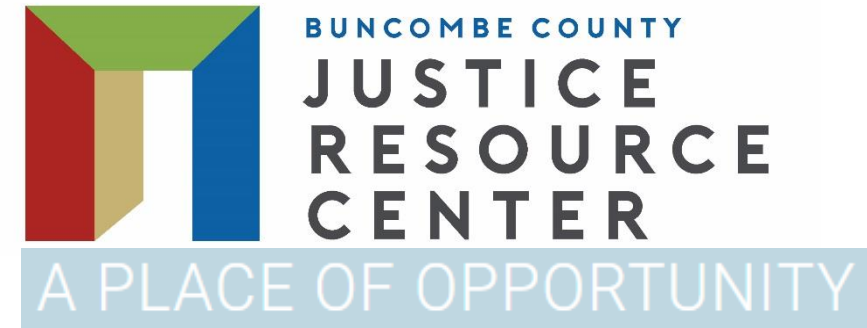
EQUITY EFFORTS



Coordinated systems of response:



- Domestic & sexual violence support
- Law enforcement, Counseling, legal support, medical access, safety planning & healing
- Open since July 2016
- 770 survivors have accessed integrated intake services so far
- 13% African American



- Connections for people who are justice-involved
- Case management, career & educational navigation, benefits access, diversion, expunction
- Open since October 2017
- 448 participants served so far
- 24% African American



The Blue Horizons Project was formed through the **Energy Innovation Task Force**, a working group convened in April 2016 by the City of Asheville, Buncombe County and Duke Energy.

Goals:

In the long term, transition the Duke Energy Progress – West Region to a cleaner, affordable, and smarter energy future, rooted in community engagement and collaboration.

In the short term, avoid or delay the construction of a 190 MW natural gas plant planned for 2023.

Activities for 2018 Include:

- Increasing market penetration and use of Duke's DSM programs (EnergyWise Home/Business, SmartSaver. etc.) to address peak energy demand.
- Basic Energy Efficiency upgrades for 2000+ homes in Buncombe through Duke, Energy Savers Network and Community Action Opportunities
- Energy Audits and Efficient upgrades for public facilities
- Completion of a community wide renewable energy feasibility study
- Increased installation of renewable energy in Buncombe County

AFFORDABLE HOUSING



Asheville Regional Housing Consortium:

Goal is to improve quality and increase affordable housing supply within within the jurisdictions of the units of general local government located in Buncombe, Henderson, Madison, and Transylvania Counties that have executed the Consortium's "Joint Cooperation Agreement."

Distributes Federal funds (HOME/CDBG) through a competitive application process



HOUSING PARTNERSHIPS



- **Williams-Baldwin Teacher Housing:** First dedicated housing development for teachers in Western NC with 24 apartment units (Collaboration: BC/Eblen Charities/SECU/BC & COA Schools).
- **East Haven Apartments:** Community Oriented Development (BC Zoning Ordinance – incentivizes density) by MHO with 95 units; Received \$8 million in federal tax credits, and \$1.25 million in State funding; Received \$675,000 in Federal HOME funds and \$75,000 from Buncombe County as matching funds; ART transit stops (each side of US 70)



EAGLE MARKET PLACE



- A planned mixed use development that includes renovation of three historic buildings and construction of one new building, over 90,000 SF built to Energy Star standards
- County commitment of \$300,000 through Affordable Housing Services Program
- City commitment of \$3.9 million through Housing Trust Fund
- \$462,600 from Federal HOME funds
- Units: 30 workforce/32 affordable



LEE WALKER HEIGHTS



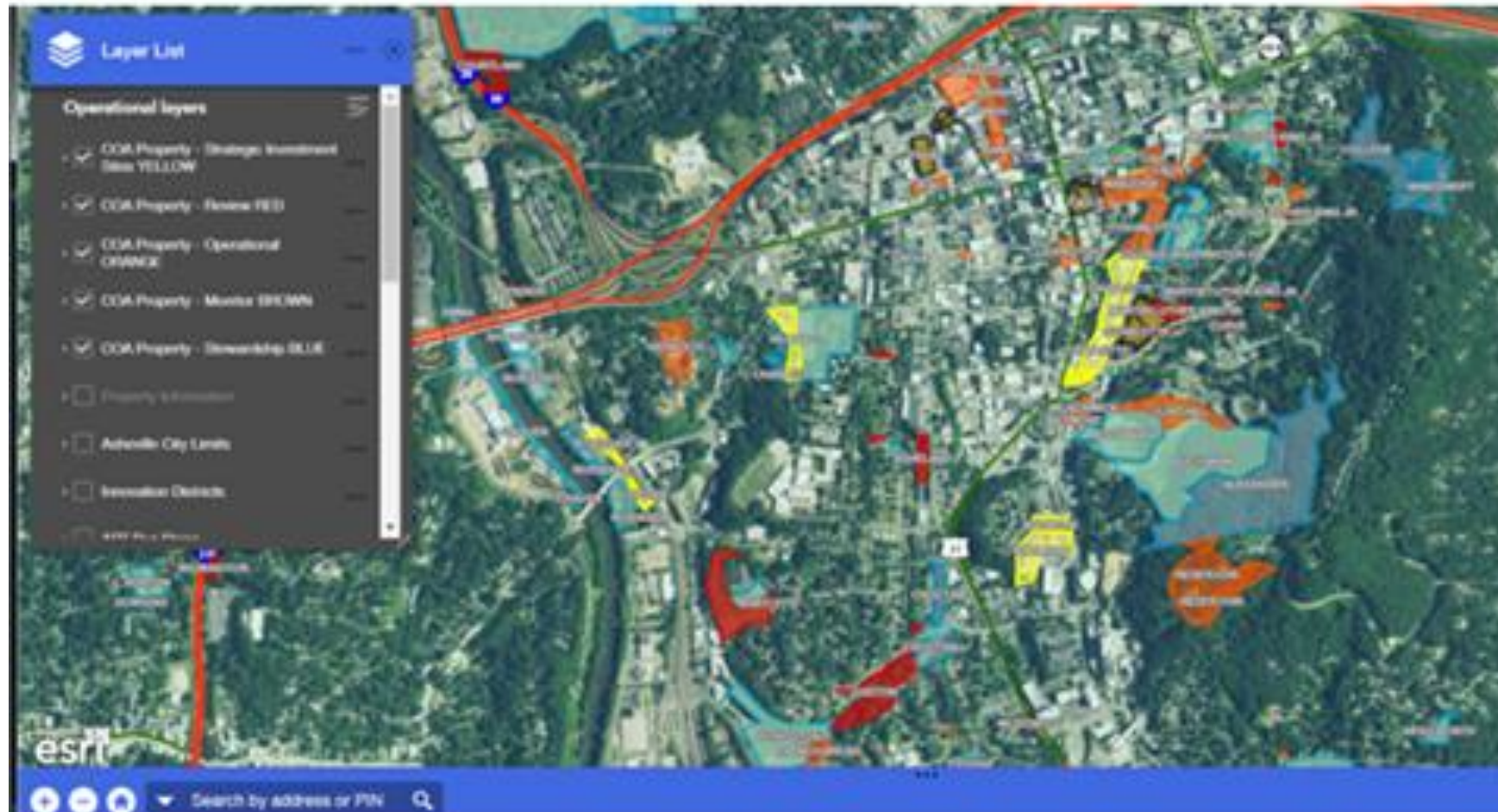
- County commitment of \$4.2 million and City commitment of \$4.2 million, for a total of \$8.4 million in local government support
- Units: 212 affordable, energy efficient, transit oriented apartments
- Received federal housing tax credits which will result in \$12 million in private investment



REDEVELOPMENT OF CITY OWNED LAND



City Owned Land Analysis



ADDITIONAL PARTNERSHIPS



Public Safety	Joint Boards and Commissions	Economic and Community Development Resources	Energy and the Environment
Emergency Management			
Asheville Buncombe County Arson Task Force	African American Heritage Commission of Asheville and Buncombe County	City of Asheville Youth Leadership Academy (CAYLA)	Environmental Control Specialists
BCAT (Buncombe County Anticrime Taskforce)	Energy Innovation Task Force	Civil Rights Services	Air Quality Management
City/County Identification Bureau	Historic Resources Commission	Economic Development	Alternative Fuel Station
Child Advocacy Center	Homeless Initiative	HOME	Southeast Sustainability Director's Network - Kendeda Fund
Crimestoppers	Asheville Area Riverfront Redevelopment Commission/Riverfront Redevelopment	Libraries	Energy Innovation Task Force Commercial Retrofits
Criminal Justice Information System		Pack Square Cultural Partnership (Pack Place)	
DWI Task Force		WNC Diversity Engagement Coalition	
Family Justice Center	Annual Joint Board/Commission Volunteer Recognition Program		Animal Services
Focused Deterrence		Transportation	Animal Shelter
Task Force 2	Parks and Recreation	Transit- Federal Funding	Spay/Neuter Services
Buncombe County Juvenile Crime Prevention Council	Parks, Greenways, & Recreation	Transit- Transit Master Plan	
Domestic Violence Focused Deterrence	WNC Nature Center	Transit- Route Planning and Regional Connections	Information Technology
			GIS

POTENTIAL FUTURE PARTNERSHIPS



JOINT DEVELOPMENT & LAND USE PLANNING
TRANSPORTATION STUDY/SERVICES
ADDITIONAL OPPORTUNITIES AND IDEAS