

# Tolar – Rezoning

## Map 1: Topography

### Requested Zoning:

- Public Service District PS

### Current Zoning:

- Residential District R-1

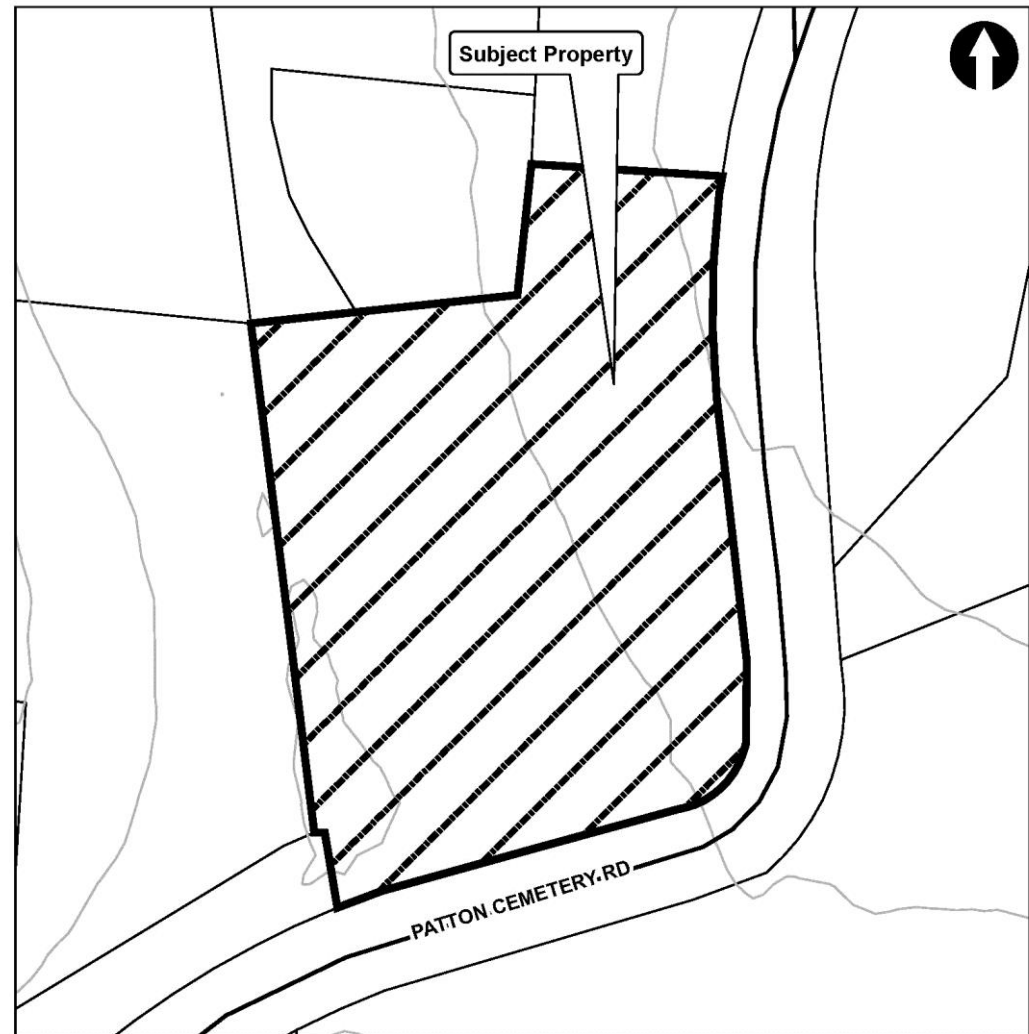
### Staff Recommendation:

- Approval

### Planning Board

### Recommendation:

- Approval



### Tolar Zoning Map Amendment

Case Number: ZPH2017-00032  
PIN Number: 9689-82-4640  
Approximate Property Size: 1.64 acres  
Application Date: June 6, 2017  
PB Hearing Date: July 17, 2017

Created By: Buncombe Co. Planning  
Date: 7/3/2017

# Tolar – Rezoning

## Map 2: Aerial Photo

Requested Zoning:

- Public Service District PS

Current Zoning:

- Residential District R-1

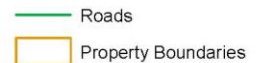
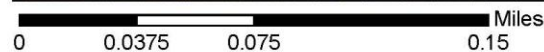
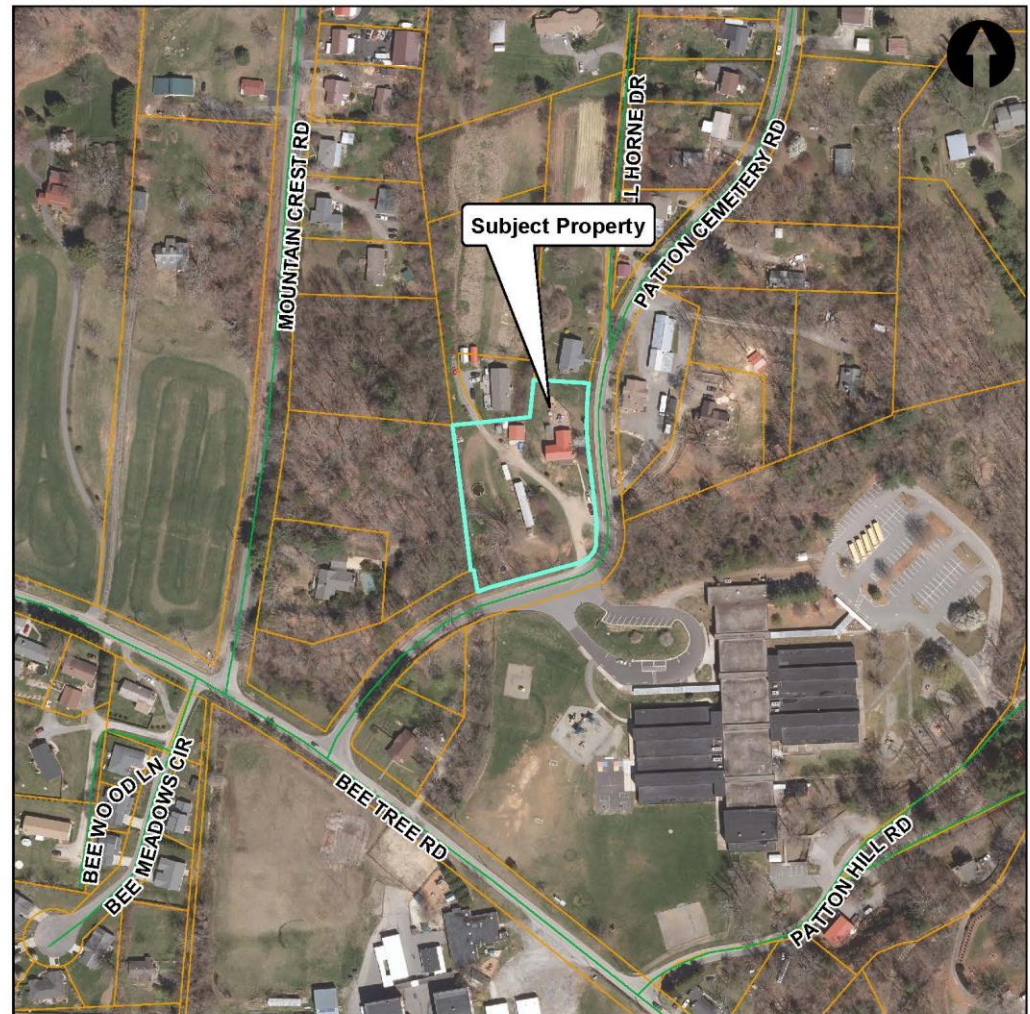
Staff Recommendation:

- Approval

Planning Board

Recommendation:

- Approval



### Tolar Zoning Map Amendment

Case Number: ZPH2017-00032  
PIN Number: 9689-82-4640  
Approximate Property Size: 1.64 acres  
Application Date: June 6, 2017  
PB Hearing Date: July 17, 2017

Created By: Buncombe Co. Planning  
Date: 7/3/2017

# Tolar – Rezoning

## Map 3: Land Use Constraints

### Requested Zoning:

- Public Service District PS

### Current Zoning:

- Residential District R-1

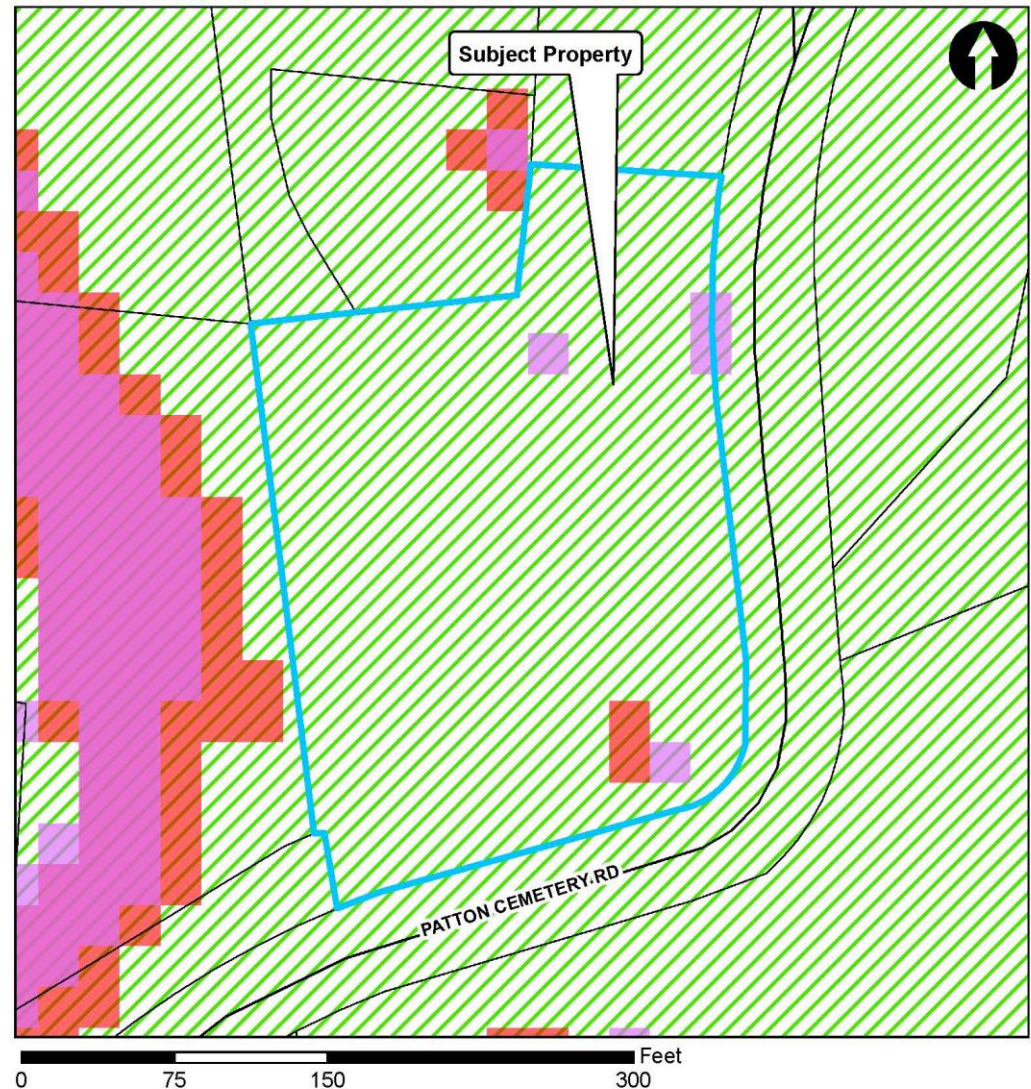
### Staff Recommendation:

- Approval

### Planning Board

### Recommendation:

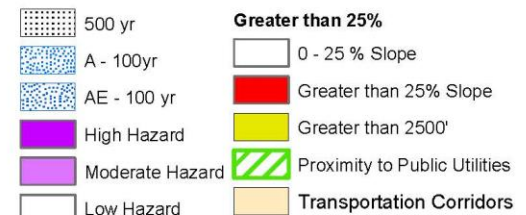
- Approval



### Tolar Zoning Map Amendment

Case Number: ZPH2017-00032  
 PIN Number: 9689-82-4640  
 Approximate Property Size: 1.64 acres  
 Application Date: June 6, 2017  
 PB Hearing Date: July 17, 2017

Created By: Buncombe Co. Planning  
 Date: 7/3/2017



# Tolar – Rezoning

## Map 4: Zoning

Requested Zoning:

- Public Service District PS

Current Zoning:

- Residential District R-1

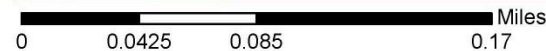
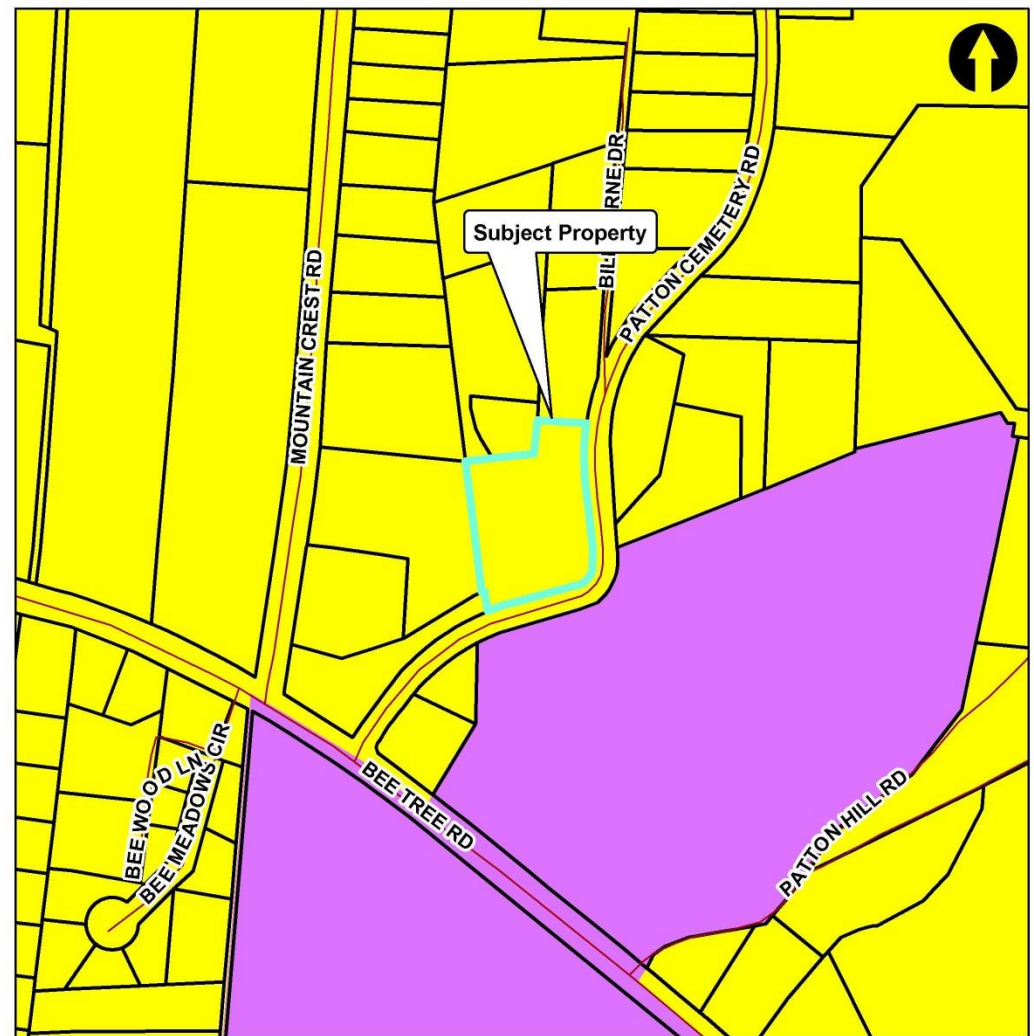
Staff Recommendation:

- Approval

Planning Board

Recommendation:

- Approval



### Tolar Zoning Map Amendment

Case Number: ZPH2017-00032  
 PIN Number: 9689-82-4640  
 Approximate Property Size: 1.64 acres  
 Application Date: June 6, 2017  
 PB Hearing Date: July 17, 2017

Created By: Buncombe Co. Planning  
 Date: 7/3/2017

