

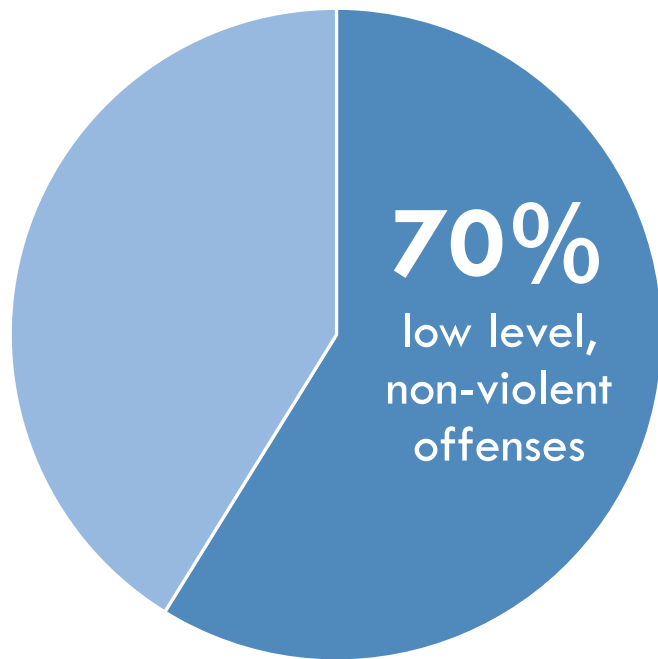
# BUNCOMBE COUNTY JUSTICE RESOURCE PLANNING

Leveraging best practices to reduce the jail population,  
increase system efficiency and promote safety & wellness

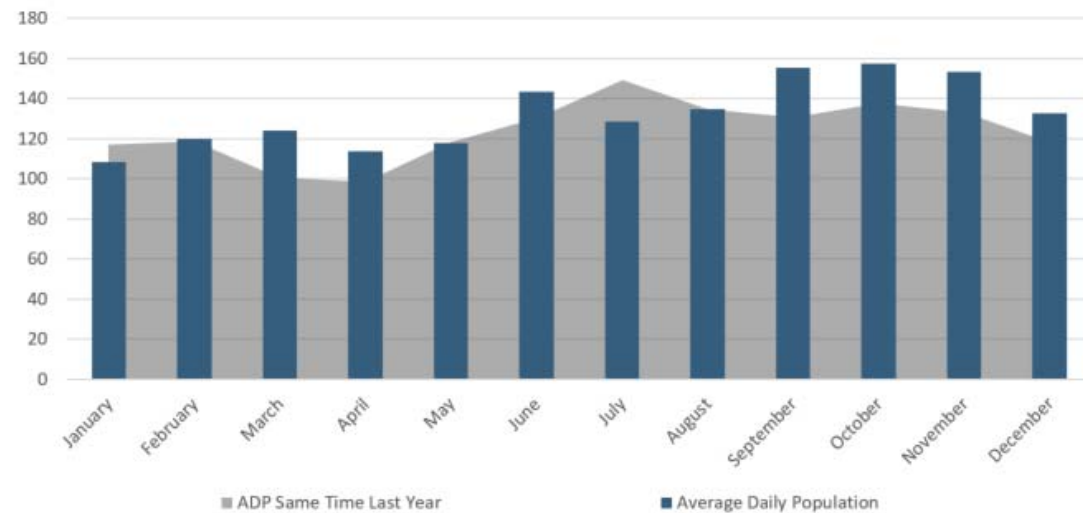


# OPPORTUNITY FOR JAIL DIVERSION

Our jail housed **more than 7,500 people** in 2016



This population **increased 7%** from 2015 to 2016



# MENTAL ILLNESS & SUBSTANCE USE DISORDERS



## Nationally...

- The rate of serious mental illness in the incarcerated population is **2 to 6 times higher** than the general public
- Nearly **70%** of jail inmates meet the criteria for substance abuse



## In Buncombe County...

- **51 jail beds a day** are occupied by individuals receiving medical treatment for a serious mental illness
- Recidivism rates for people with mental illness are **twice as high** as other defendants
- Nearly 800 inmates were monitored for substance withdrawal in 2016, nearly a **30% increase** from 2015

# IMPACT ON FAMILIES

- The majority of opioid users are women, and women are the fastest growing population in jail – in Buncombe County, the number of women jumped nearly 30% from 2015 to 2016
- Nationally, 95% of women who have been incarcerated have a trauma history
- Abuse in childhood is strongly correlated with adult victimization, substance abuse, and criminality
- The rate of developmental and behavioral disorders in kids was higher in those whose parent went to jail versus kids who experienced a parent death or divorce



# SOCIAL DETERMINANTS OF HEALTH

- The conditions in which we are born, grow, live, work and age impact our health risks and outcomes
- Adverse Childhood Experiences (ACEs) – our lives are shaped by experiences in childhood
- Trauma-informed systems and approaches are needed
- Important to create strong links between Justice Resources and Health and Human Services

What is  
**ACE**  
and Why is it  
Important  
to **You?**

# COLLATERAL CONSEQUENCES

Misdemeanors can carry lifelong impacts- even without a conviction. Such as access to...

- Housing
- Employment
- Education
- Financial Assistance

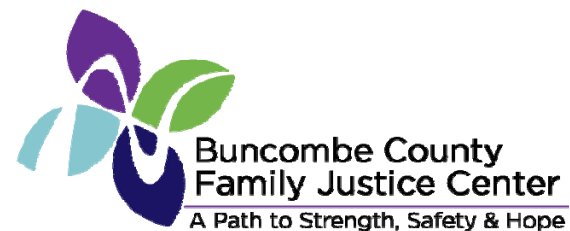


# BUNCOMBE IS ALREADY A LEADER

Local programs based on national models:

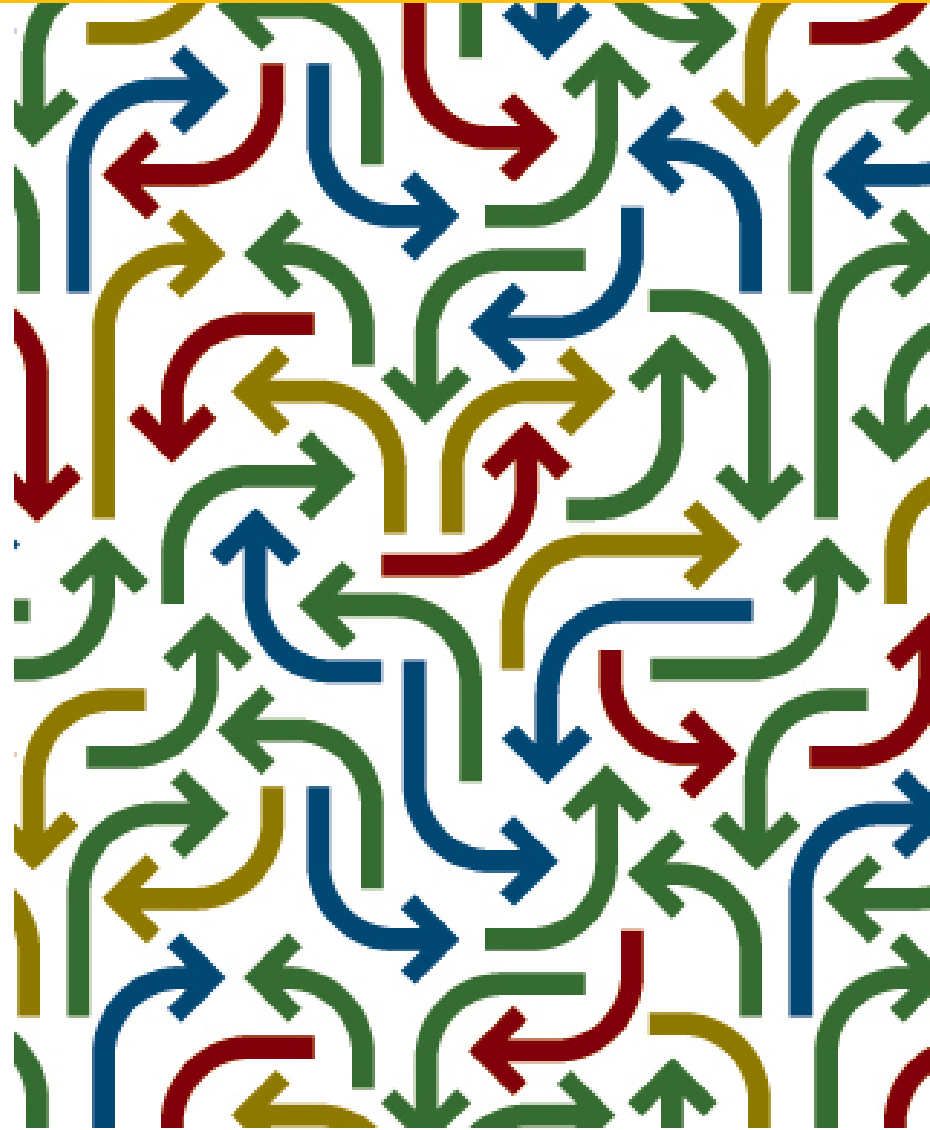
- Specialty Courts – DWI, Drug Treatment, Veterans
- Crisis Intervention Team
- Jail case management
- High utilizer support
- Navigation for High Risk Uninsured
- Pre-Trial release

Recent landmark efforts to coordinate systems:



## SYSTEM COORDINATION NEEDED

- Fragmented system
- Lack of coordination & efficiency
- Limited diversion options
- Disconnected from community resources & supports





# OUR TESTED APPROACH

- ✓ Evidence-based, national models
- ✓ Coordinated efforts
- ✓ Data-driven decision making
- ✓ Smart partnerships
- ✓ Outcomes-focused
- ✓ Cost avoidance
- ✓ Reinvestment of Savings
- ✓ Sustainable

# OUR STRATEGY

## **Protect Community Safety:**

Public safety is paramount in the current system as well as the proposed model which enhances tools used by law enforcement and the courts

## **Formalize Coordination:**

Establishment of a Justice Resource Collaborating Council and Coordinator will increase efficiency in a fragmented system

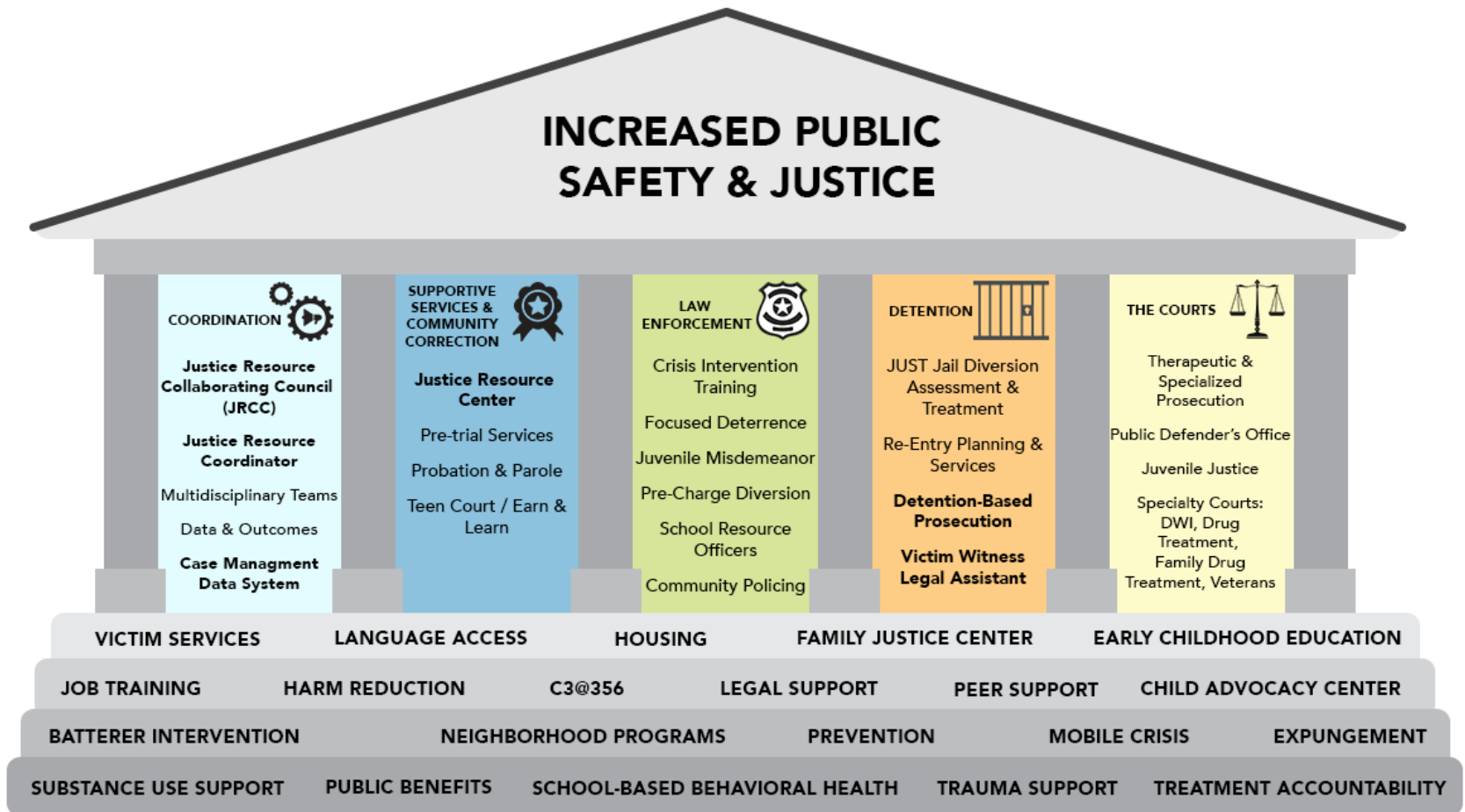
## **Invest in System Gaps:**

Services and supports will be created for a seamless system, including a Justice Resource Center, Detention-based Prosecution, Victim Witness Legal Assistant, and enhancements to Pretrial Services

## **Provide Infrastructure Support:**

The new model will be undergirded by a foundation for effectiveness, including a Case Management Data System, Business Intelligence, Planning & Evaluation

# PROPOSED MODEL





# JUSTICE RESOURCE COORDINATION

## Coordination

-  Justice Resource Collaborating Council
-  Justice Resource Coordinator
- Multidisciplinary Teams
- Data & Outcomes Support
- Planning & Evaluation
-  Case Management Data System

## Supportive Services & Community Correction

-  Justice Resource Center
-  Pretrial Services
- Probation & Parole
- Teen Court / Earn & Learn

## Law Enforcement


- Crisis Intervention Training
- Focused Deterrence
- Juvenile Misdemeanor Pre-Charge Diversion
- School Resource Officers
- Community Policing

## Detention

- JUST Jail Diversion Assessment & Treatment
- Re-Entry Planning & Services
-  Detention-based Prosecution
-  Victim Witness Legal Assistant

## The Courts

- Therapeutic & Specialized prosecution
- Juvenile Justice
- Specialty Courts:
  - DWI
  - Drug Treatment
  - Family Drug Treatment
  - Veterans

 = Denotes new or increased investments

# EXPECTED RESULTS

- Increased public safety and justice
- Increased system efficiency
- Eliminate duplication
- Treatment focused system
- Diversion of non-violent offenders
- Reduced recidivism rates
- Increased wellness and employment
- Families stay intact



# INVEST IN PEOPLE, AVOID COST

- Current capital plan calls for costly new detention facility **\$45 million**
- Targeted investments can delay or even eliminate the need for a new jail **\$547,000**
- Self sustaining model, invests cost savings for system improvement



# TRACKING OUR PROGRESS WITH REAL TIME DATA



# CITATIONS & LINKS OF INTEREST

- Nationally, the rate of serious mental illness in the incarcerated population is two to six times higher than the general population - see Cloud, D., & Davis, C. (2013). *Treatment Alternatives to Incarceration for People with Mental Health Needs in the Criminal Justice System: The Cost-Saving Implications*. New York, NY: Vera Institute of Justice.
- Nearly 70% of jail inmates meet the criteria for substance abuse – see Karberg, J.C. & James, D.J. (2005). *Substance dependence, abuse, and treatment of jail inmates, 2002*. Washington, DC: Bureau of Justice Statistics, U.S. Department of Justice.
- The majority of opioid users are women – see National Safety Council *Prescription Nation, Addressing America's Drug Epidemic*. (2016). And see Reddy, U.M. (2016). Screening, Prevention, and Treatment of Opioid Use Disorder During Pregnancy: Expectant mothers are depending on you! *Obstetrics & Gynecology*, 128(1), 1-3.
- Women are the fastest growing jail population – see Swavola, E., Riley, K., & Subramanian, R. (2016). *Overlooked: Women and Jails in an Era of Reform*. New York, NY: Vera Institute of Justice.
- 95% of women who have been incarcerated have a trauma history – see Fedock, G., Fries, L., & Kubiak, S. P. (2013). Service needs for incarcerated adults: Exploring gender differences. *Journal of Offender Rehabilitation*, 52(7), 493-508.
- Abuse in childhood is strongly correlated with adult victimization, substance abuse, and criminality – see Miller, N.A. & Najavits, L.M. (2012). Creating trauma-informed correctional care: A balance of goals and environment. *European Journal of Psycho-Traumatology*, 3.
- The rate of developmental and behavioral disorders in kids was higher in those whose parent went to jail versus kids who experienced a parent death or divorce – see Turney, K. (2014). Stress proliferation across generations? Examining the relationship between parental incarceration and childhood health. *Journal of Health and Social Behavior*, 55(3), 302-319.
- <http://www.jmijustice.org/network-coordination/national-network-criminal-justice-coordinating-councils/>
- <http://www.naco.org/blog/resources-criminal-justice-coordinating-councils-cjccs>
- <http://www.pretrial.org/download/pji-reports/Keeping%20Your%20CJCC%20Going%20Strong%20-%20Jones%202013.pdf>
- <http://www.naco.org/resources/data-driven-justice-playbook>
- <https://stepuptogether.org/>
- [www.buncombeaces.org](http://www.buncombeaces.org)
- <http://ccat.sog.unc.edu/>