

Buncombe County Agenda Item Information Sheet

AGENDA ITEM:

Rejection of School Board's Offer to Sell a Small Parcel of Property to the County

MEETING DATE:

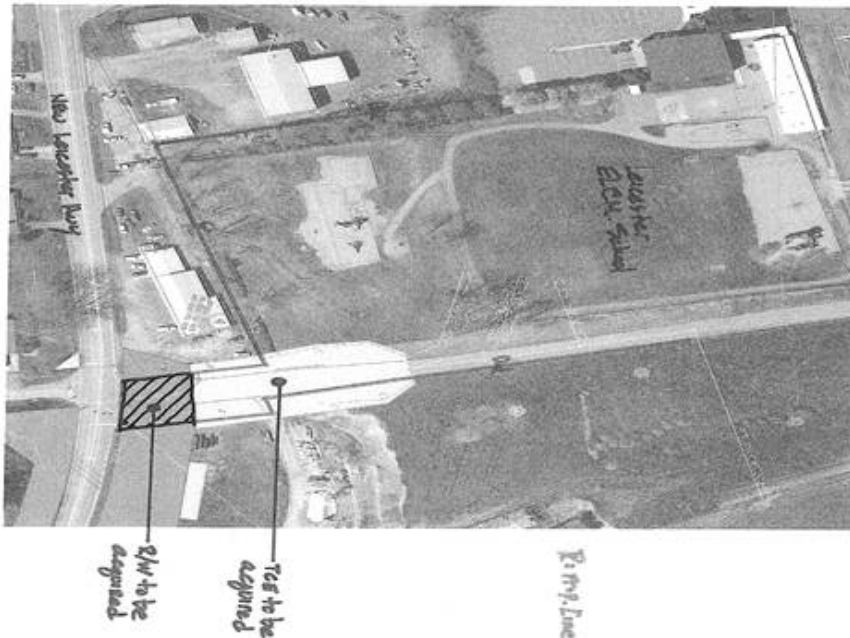
May 31, 2017

REQUESTED BY:

The Buncombe County School Board

Background information

The School Board would like to sell a small parcel of surplus property along Leicester Highway (approx. 0.117 acres in front of Leicester Elementary School) to the North Carolina Department of Transportation. NCDOT may make improvements to the road. Pursuant to N.C. Gen. Stat. §115C-518, the School Board must first offer to the County any property it wishes to sell. The picture below was provided by the School Board; the square with stripes in the picture represents the parcel. The County would almost certainly have no use for this property.



Pro's

The roadway in front of Leicester Elementary school may be improved by NCDOT.

Con's

None. The County would almost certainly have no use for this property.

Funds required in current budget:

None.

Funds required in future budgets:

None.

Alternatives

N/A

Action recommended:

Reject the School Boards offer to sell to the County the above depicted approximately 0.117 acre parcel of property along New Leicester Highway at the Leicester Elementary school.