

First Citizens Bank – Madison Inn

Map 1: Topography

Requested Zoning:

- Residential District R-2

Current Zoning:

- Single-Family Residential District R-1

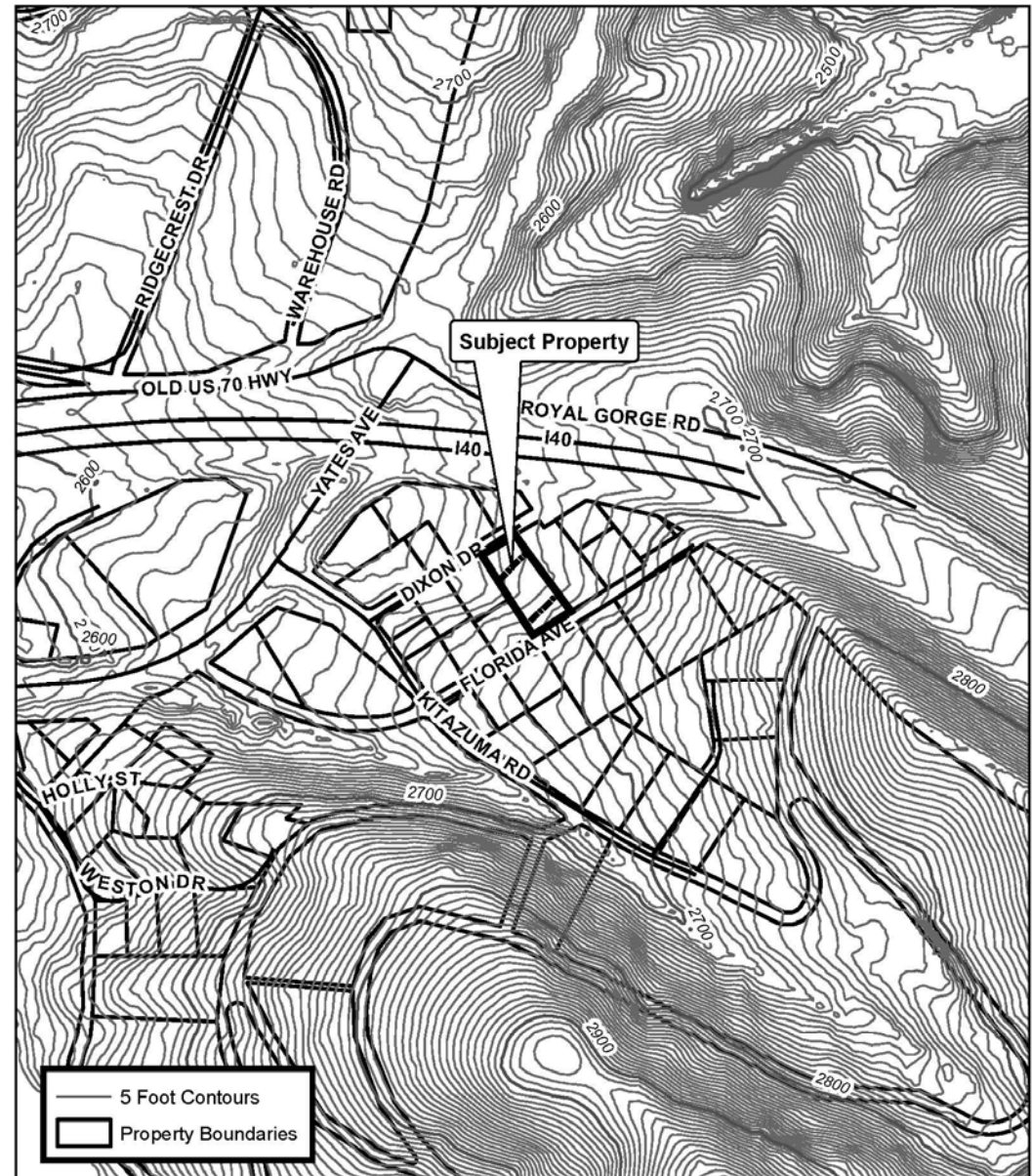
Staff Recommendation:

- Approval

Planning Board

Recommendation:

- Approval



First Citizens Bank & Trust Map Amendment

Case Number: ZPH2015-00079
Approximate Property Size: 0.49 acres
Application Date: November 20, 2015
Planning Board Hearing Date: December 21, 2015



0 175 350 700
Feet

Created By: Buncombe Co. Planning
Date: December 1, 2015

First Citizens Bank – Madison Inn

Map 2: Aerial Photo

Requested Zoning:

- Residential District R-2

Current Zoning:

- Single-Family Residential District R-1

Staff Recommendation:

- Approval

Planning Board

Recommendation:

- Approval



First Citizens Bank & Trust Map Amendment

Case Number: ZPH2015-00079
Approximate Property Size: 0.49 acres
Application Date: November 20, 2015
Planning Board Hearing Date: December 21, 2015



0 125 250 500
Feet

Created By: Buncombe Co. Planning
Date: December 1, 2015

First Citizens Bank – Madison Inn
Map 3: Land Use Constraints

Requested Zoning:

- Residential District R-2

Current Zoning:

- Single-Family Residential District R-1

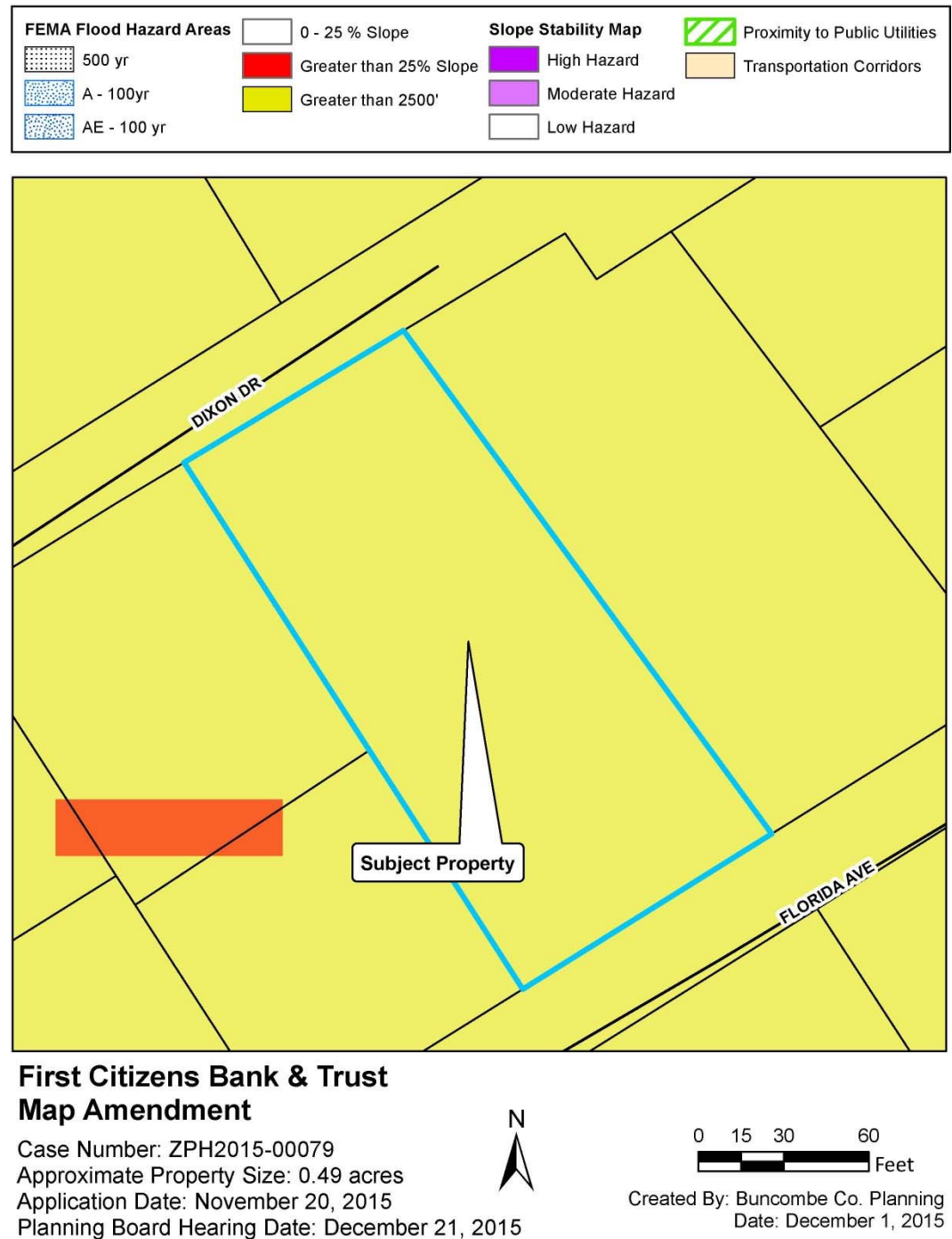
Staff Recommendation:

- Approval

Planning Board

Recommendation:

- Approval



First Citizens Bank – Madison Inn

Map 4: Zoning

Requested Zoning:

- Residential District R-2

Current Zoning:

- Single-Family Residential District R-1

Staff Recommendation:

- Approval

Planning Board

Recommendation:

- Approval

