

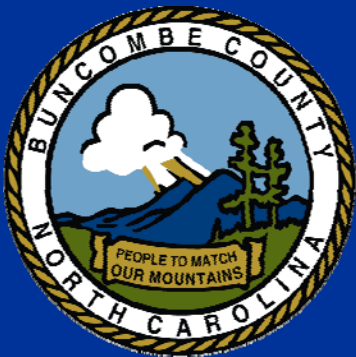
Alternative Funding Options to Maintain Sustainable Solid Waste Program



January 19, 2016

Mission Statement

The Landfill's mission is to protect the health and safety of all citizens by disposing of all waste generated in Buncombe County in the most efficient, cost effective and environmentally sound manner possible.



Several waste reduction activities are centered at the landfill



Elements of the solid waste program are capital intensive

New CAT 836 Compactor
(\$900,000)



New CAT D8 Bulldozer
(\$600,000)



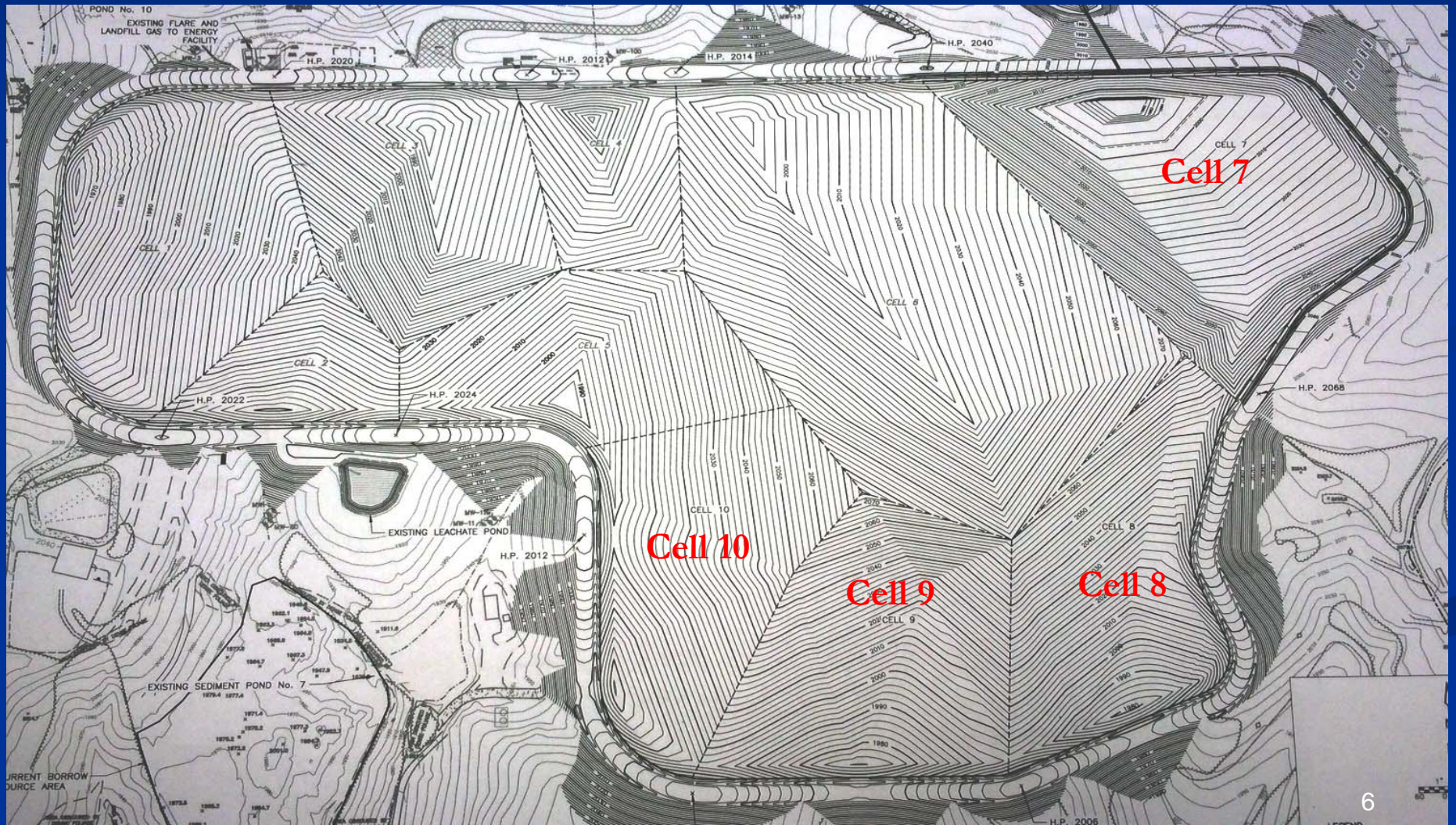
Subtitle D Cell 6
(\$8.26 million)



Landfill > 50% Constructed



Future Cell Construction > \$50M, need to increase waste reduction



Sustainability & Cost Savings

Estimated savings vs. out-of-county disposal:

- Since 1996: \$39 million
- Present - 2050: \$51 million

Buncombe County is ranked #13 in NC for total public recycling per capita

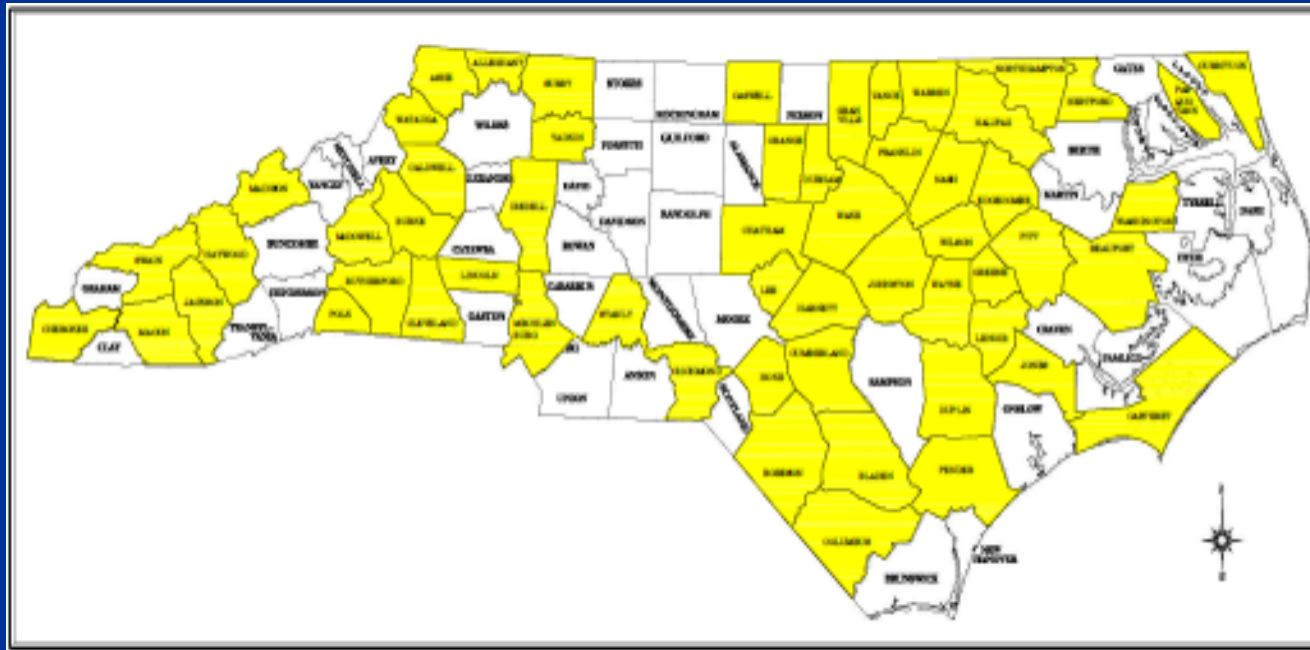


A nominal HH SW Fee will allow lower tipping fees

Waste Reduction Program Costs:	\$1,671,000
<u>County-Wide Households</u>	<u>92,873</u>
Estimated HH SW Fee	~ \$18/HH

Lowering tipping fee by \$6.00/ton

Common in NC, HH SW fees cover range of services/amounts



HH SW Fees are typically collected on the tax bill

- Most communities collect a HH fee in the following manner

The HH fee would be charged to both incorporated residents and unincorporated residents. In Wake County, repeated surveys over the years have shown that municipal residents use their programs the same or more than unincorporated residents.

The legal authority to institute a HH SW fee is well established

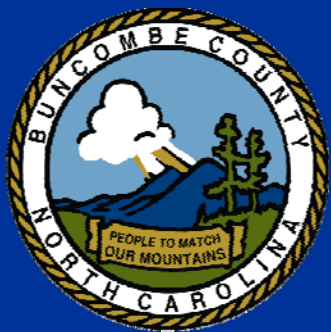
- N.C. Gen. Stat. 153A-292(b) states that the County Commissioners may impose a fee for the collection of solid waste. The fee may not exceed the cost of collection.
- N.C. Gen. Stat. 153A-293 states that the County may adopt an ordinance providing that any fee imposed under 153A-292 may be billed with property taxes and may be payable in the same manner as property taxes.

Potential benefits of a HH fee:

- Distributes cost of waste reduction programs equitably across all households
- Allows tipping fee decrease
- Raises revenue certainty for future bond issues, supports AAA bond rating
- Provides mechanism to fund additional waste reduction (e.g., food waste composting) and/or collection programs (e.g., convenience centers)

Potential drawbacks to a HH fee:

- Could be seen as an additional “tax”
- Municipalities/municipal residents could push back saying that they don’t benefit
- Fee would have to be raised if programs expanded or added in the future



Any Questions?

