

BLUE RIDGE PARKWAY OVERLAY DISTRICT

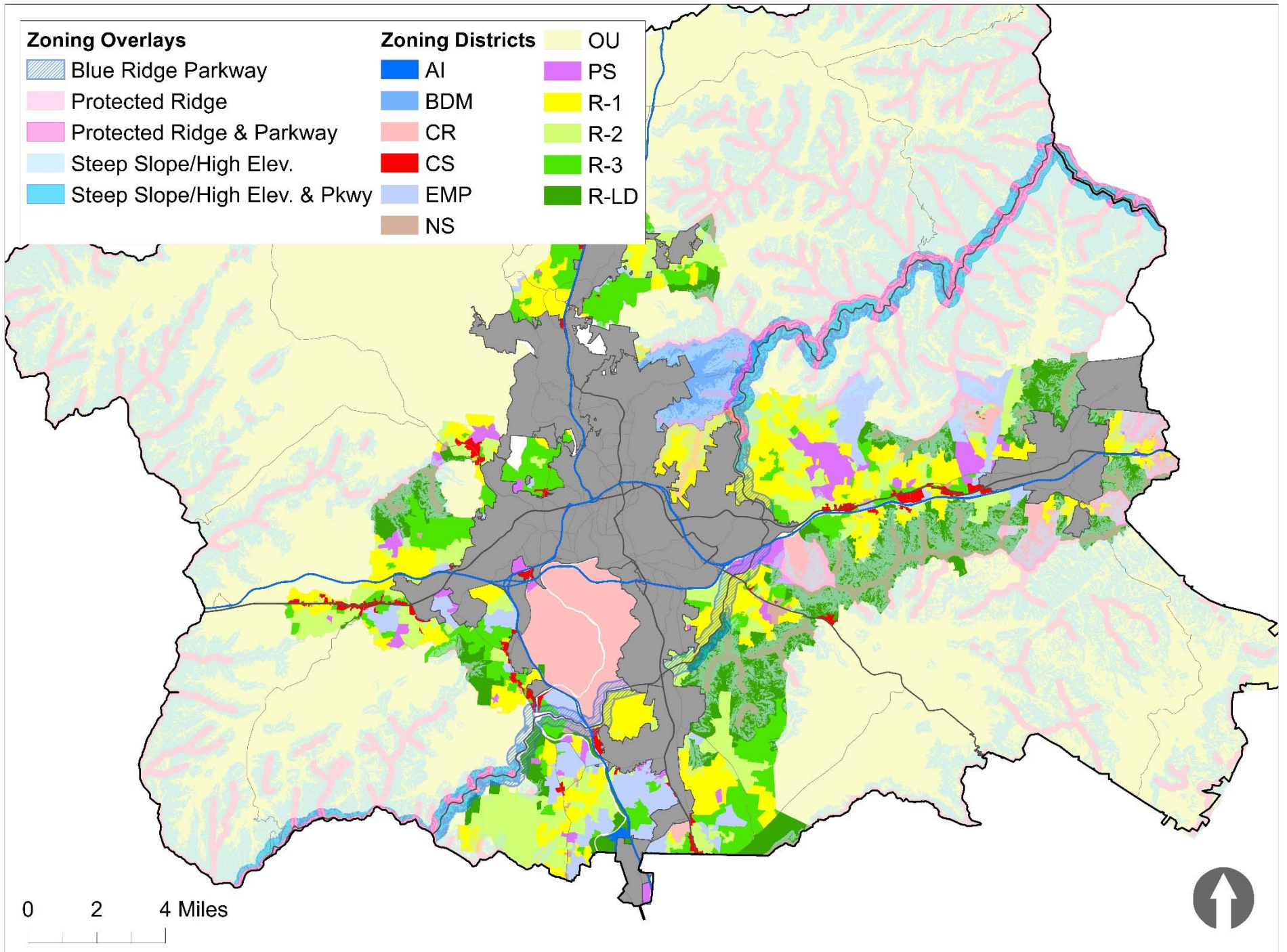
- Applies within 1,320 feet (1/4 mile) of the centerline
- Current Buffer Requirements:
 - Applies to non-single family development
 - Structure must be adjacent to Federal property & visible from the roadway
 - 30' wide buffer along property line
- Proposed Buffer Requirements:
 - Applies to all development
 - Structure must be visible from the roadway
 - Overstory and understory trees must be planted between building(s) and Parkway
- Notice Requirement:
 - Provide National Park Service with notice of major subdivisions, rezonings, conditional uses, and variances

Zoning Overlays

- Blue Ridge Parkway
- Protected Ridge
- Protected Ridge & Parkway
- Steep Slope/High Elev.
- Steep Slope/High Elev. & Pkwy

Zoning Districts

- AI
- BDM
- CR
- CS
- EMP
- NS
- OU
- PS
- R-1
- R-2
- R-3
- R-LD



0 2 4 Miles

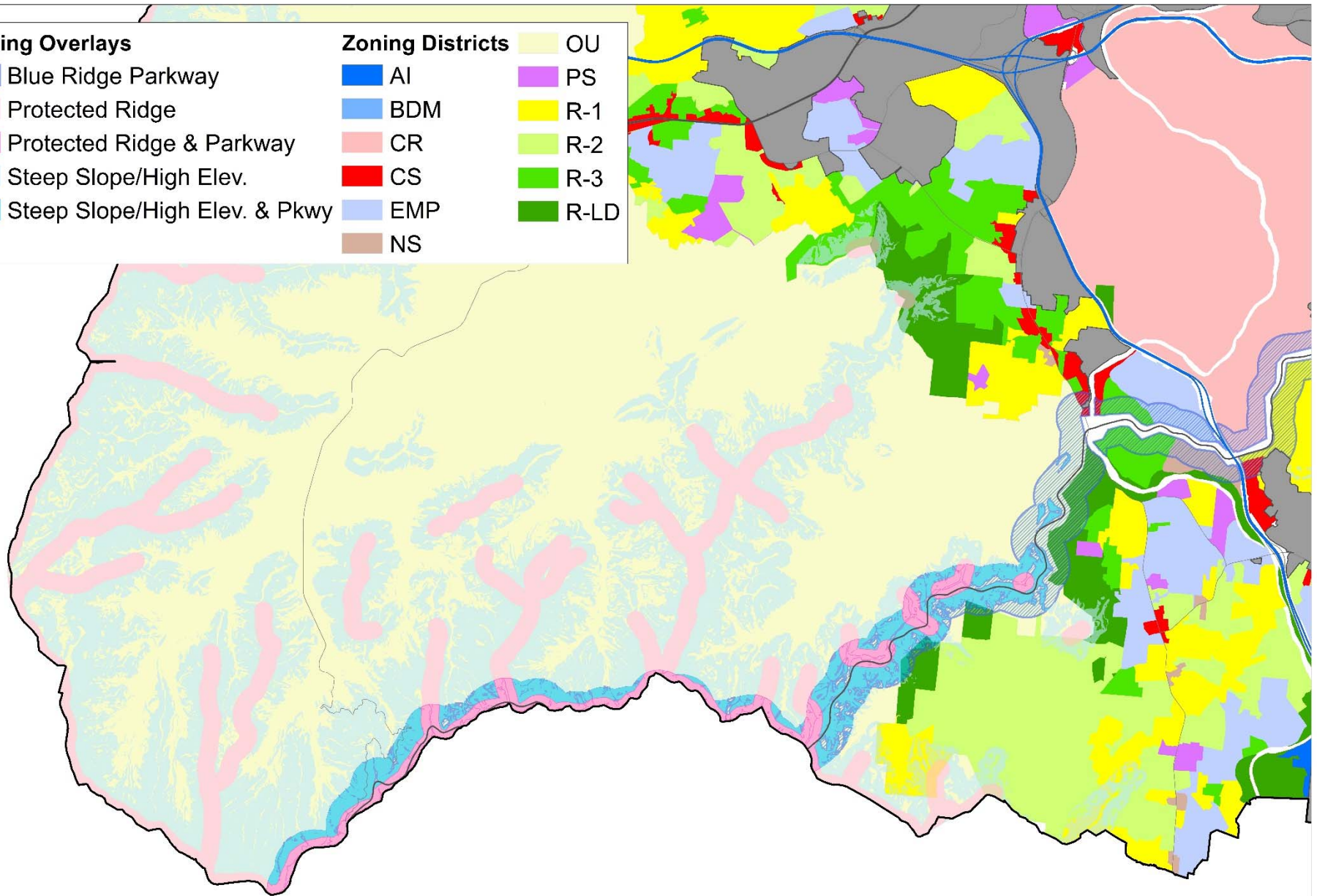


Zoning Overlays

- Blue Ridge Parkway
- Protected Ridge
- Protected Ridge & Parkway
- Steep Slope/High Elev.
- Steep Slope/High Elev. & Pkwy

Zoning Districts

- AI
- BDM
- CR
- CS
- EMP
- NS
- OU
- PS
- R-1
- R-2
- R-3
- R-LD



0 2 4 Miles

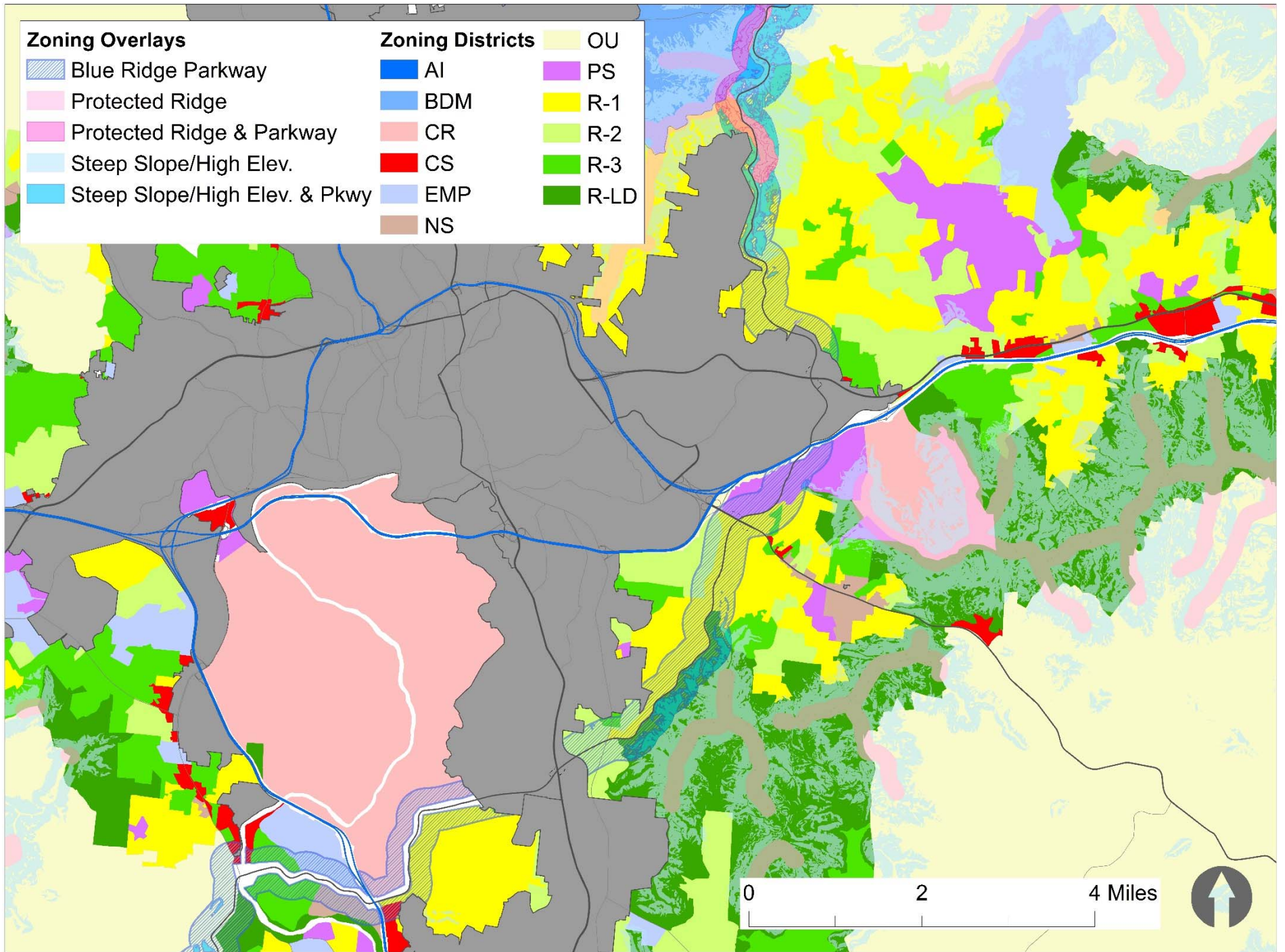


Zoning Overlays

- Blue Ridge Parkway
- Protected Ridge
- Protected Ridge & Parkway
- Steep Slope/High Elev.
- Steep Slope/High Elev. & Pkwy

Zoning Districts

- AI
- BDM
- CR
- CS
- EMP
- NS
- OU
- PS
- R-1
- R-2
- R-3
- R-LD



Zoning Overlays

- Blue Ridge Parkway
- Protected Ridge
- Protected Ridge & Parkway
- Steep Slope/High Elev.
- Steep Slope/High Elev. & Pkwy

Zoning Districts

- AI
- BDM
- CR
- CS
- EMP
- NS
- OU
- PS
- R-1
- R-2
- R-3
- R-LD

