

# John J. & Brenda A. Landgrover

## Map 1: Topography

### Requested Zoning:

- Residential District R-2

### Current Zoning:

- Single Family Residential  
District R-1

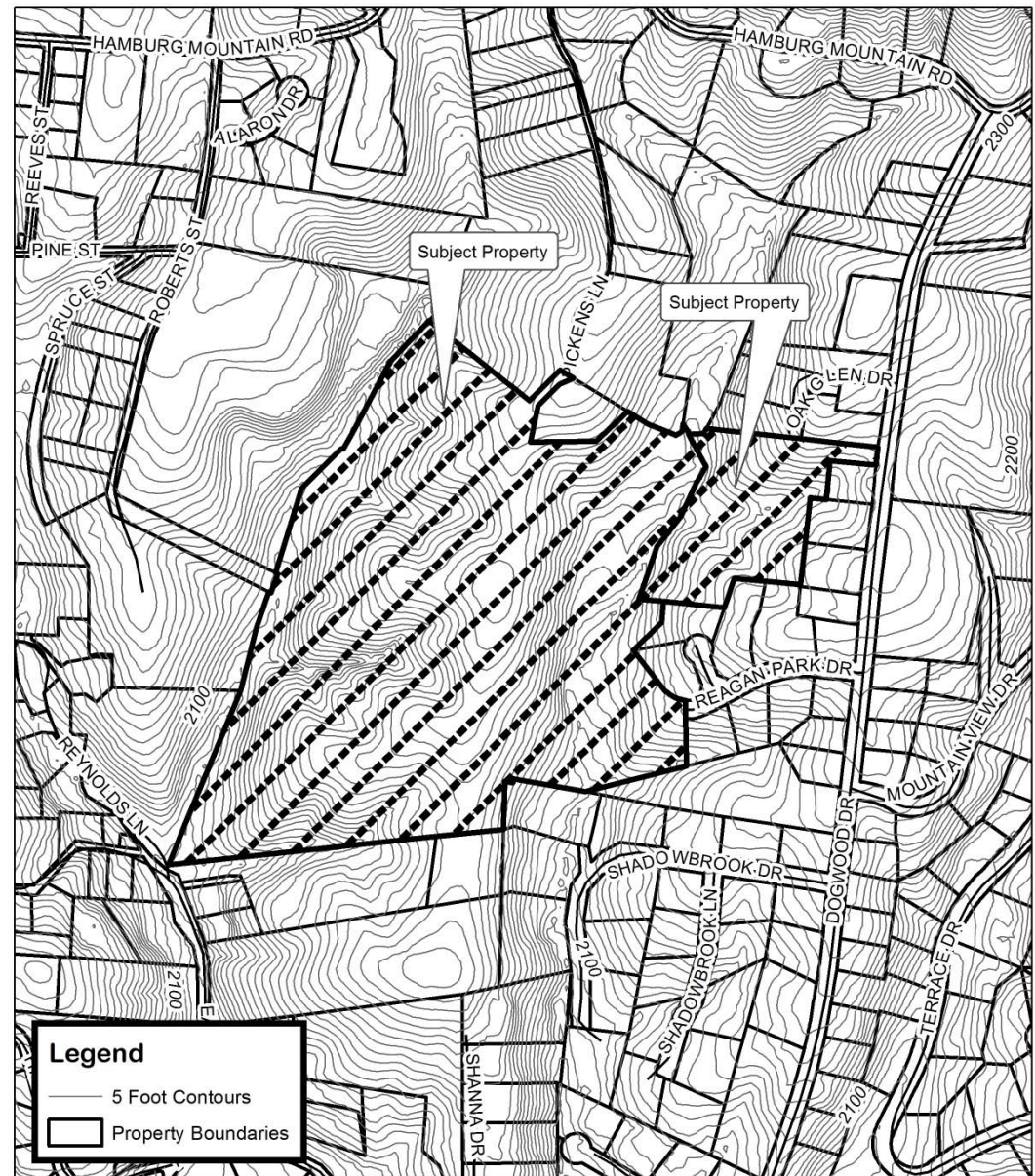
### Staff Recommendation:

- Approval

### Planning Board

### Recommendation:

- Denial



### John J. & Brenda A. Landgrover Map Amendment

Case Number: ZPH2015-00022

Approximate Property Size: 47.45 acres

Application Date: May 1, 2015

Planning Board Hearing Date: June 1, 2015

Created By: Buncombe County Planning

Date: May 5, 2015

# John J. & Brenda A. Landgrover

## Map 2: Aerial Photo

### Requested Zoning:

- Residential District R-2

### Current Zoning:

- Single Family Residential  
District R-1

### Staff Recommendation:

- Approval

### Planning Board

### Recommendation:

- Denial



### John J. & Brenda A. Landgrover Map Amendment

Case Number: ZPH2015-00022

Approximate Property Size: 47.45 acres

Application Date: May 1, 2015

Planning Board Hearing Date: June 1, 2015



0 250 500 1,000  
Feet

Created By: Buncombe County Planning  
Date: May 6, 2015

# John J. & Brenda A. Landgrover

## Map 3: Land Use Constraints

### Requested Zoning:

- Residential District R-2

### Current Zoning:

- Single Family Residential District R-1

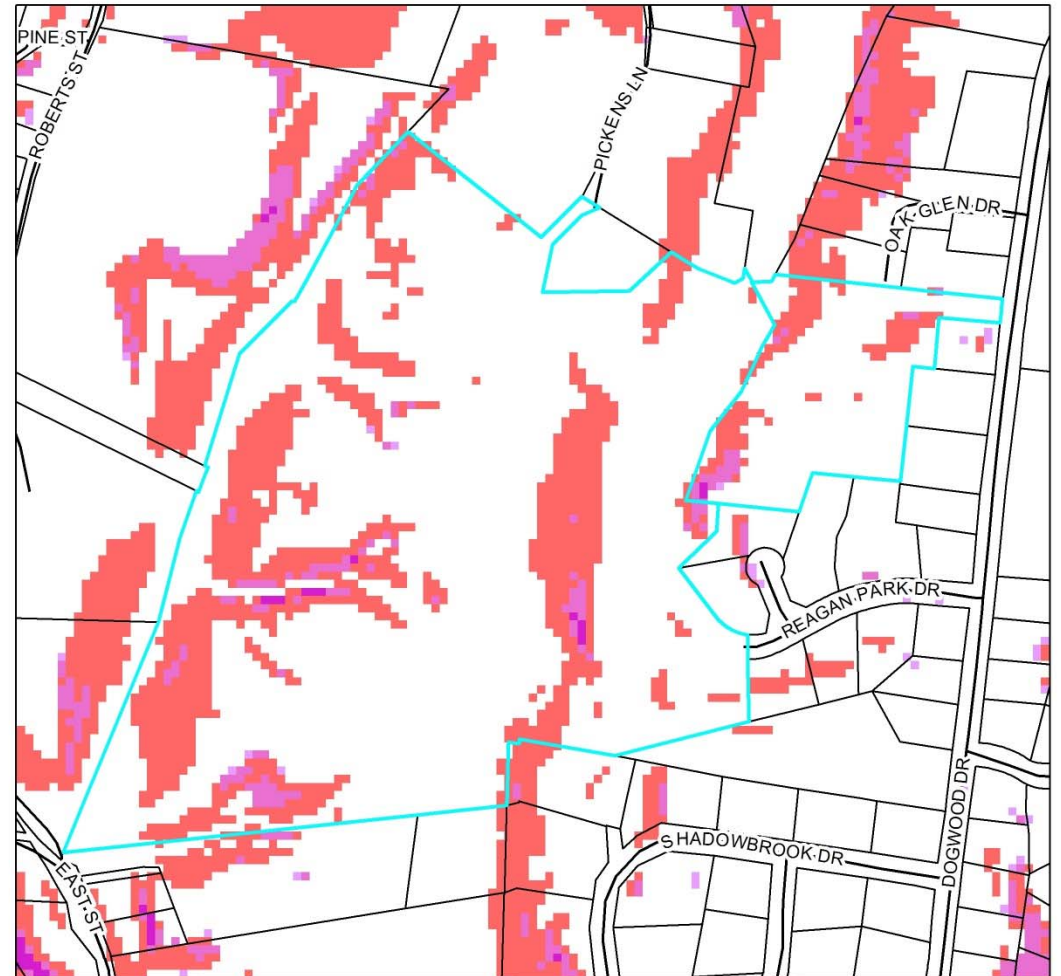
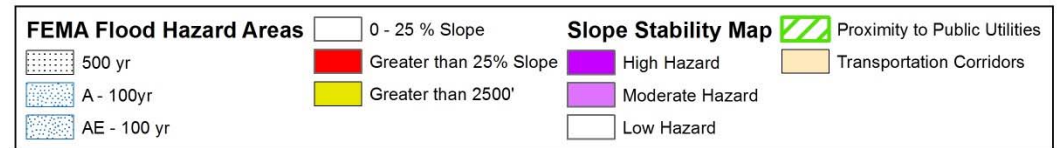
### Staff Recommendation:

- Approval

### Planning Board

### Recommendation:

- Denial



**John J. & Brenda A. Landgrover  
Map Amendment**

Case Number: ZPH2015-00022  
Approximate Property Size: 47.45 acres  
Application Date: May 1, 2015  
Planning Board Hearing Date: June 1, 2015



Created By: Buncombe County Planning  
Date: May 5, 2015

# John J. & Brenda A. Landgrover

## Map 4: Zoning

Requested Zoning:

- Residential District R-2

Current Zoning:

- Single Family Residential District R-1

Staff Recommendation:

- Approval

Planning Board

Recommendation:

- Denial

