

Biltmore Company & West Range, LLC

Map 1: Topography

Requested Zoning:

- Conference Center / Resort District (CR)

Current Zoning:

- Commercial Service District (CS)

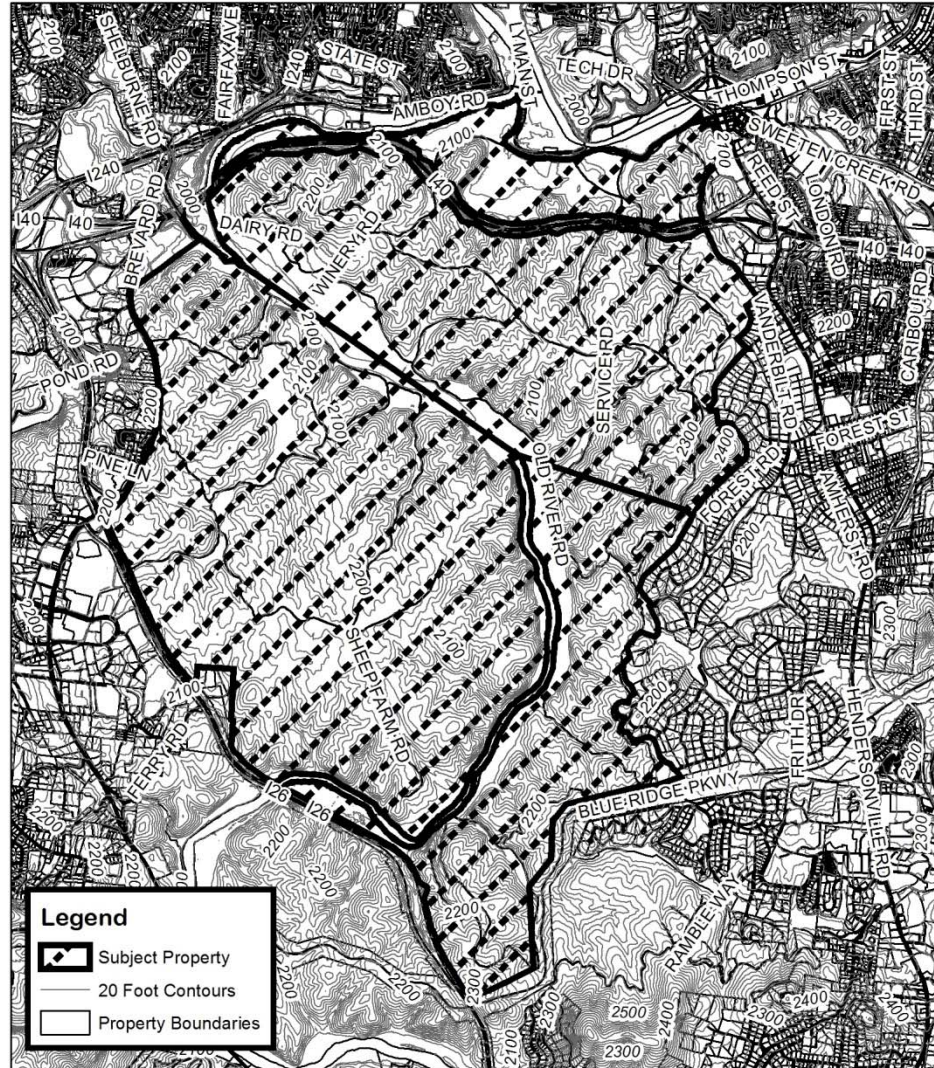
Staff Recommendation:

- Approval

Planning Board

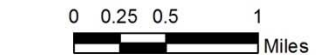
Recommendation:

- Approval



Biltmore Company and West Range, LLC Map Amendment

Case Number: ZPH2014-00013
Approximate Property Size: 6,713.5 acres
Application Date: February 18, 2014
Planning Board Hearing Date: April 7, 2014



Created By: Buncombe County Planning
Date: March 7, 2014

Biltmore Company & West Range, LLC

Map 2: Aerial Photo

Requested Zoning:

- Conference Center / Resort District (CR)

Current Zoning:

- Commercial Service District (CS)

Staff Recommendation:

- Approval

Planning Board

Recommendation:

- Approval



Biltmore Company and West Range, LLC Map Amendment

Case Number: ZPH2014-00013
Approximate Property Size: 6,713.5 acres
Application Date: February 18, 2014
Planning Board Hearing Date: April 7, 2014



0 0.25 0.5 1
Miles

Created By: Buncombe County Planning
Date: March 7, 2014

Biltmore Company & West Range, LLC

Map 3: Land Use Constraints

Requested Zoning:

- Conference Center / Resort District (CR)

Current Zoning:

- Commercial Service District (CS)

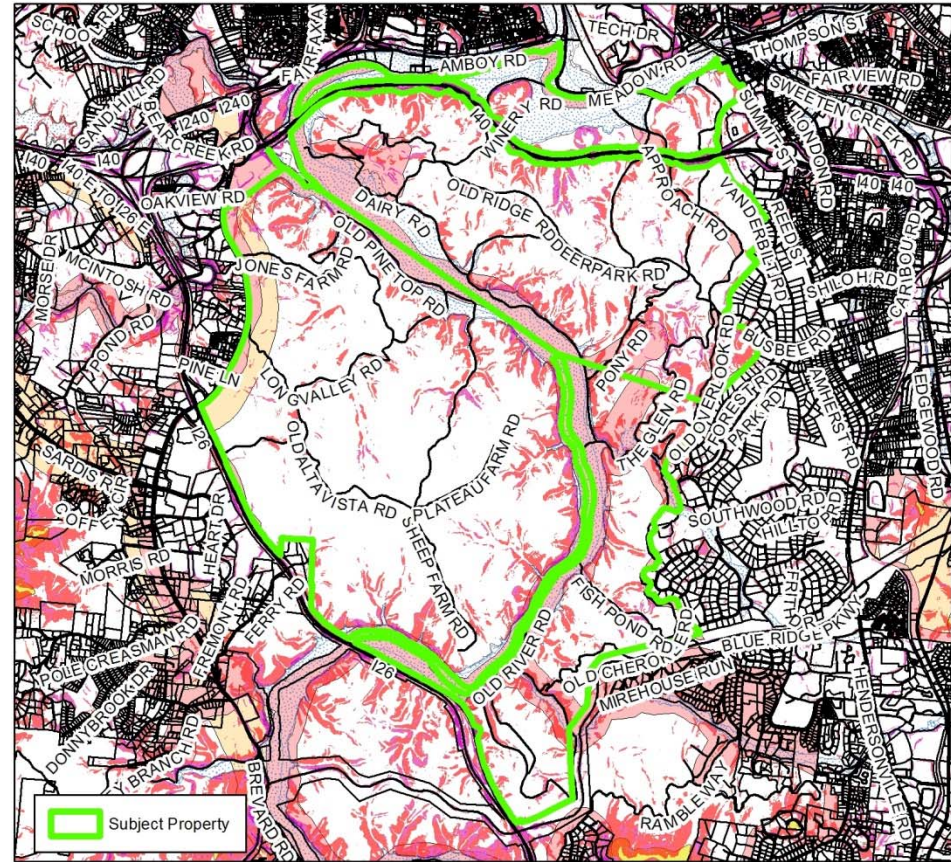
Staff Recommendation:

- Approval

Planning Board

Recommendation:

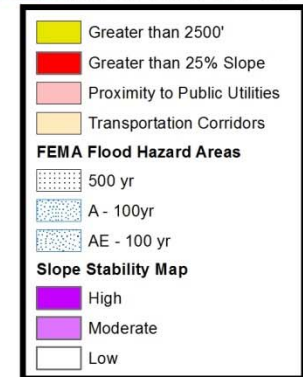
- Approval



Biltmore Company and West Range, LLC Map Amendment

Case Number: ZPH2014-00013
 Approximate Property Size: 6,713.5 acres
 Application Date: February 18, 2014
 Planning Board Hearing Date: April 7, 2014

Created By: Buncombe County Planning
 Date: March 7, 2014



Biltmore Company & West Range, LLC

Map 4: Zoning

Requested Zoning:

- Conference Center / Resort District (CR)

Current Zoning:

- Commercial Service District (CS)

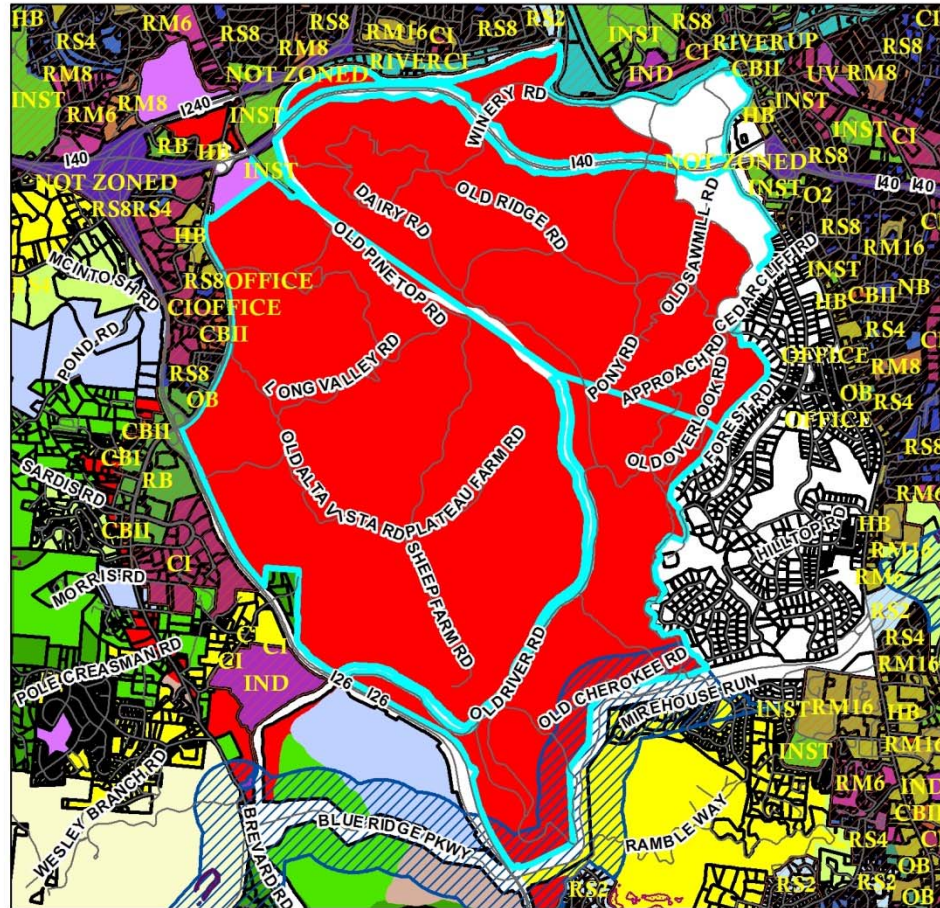
Staff Recommendation:

- Approval

Planning Board

Recommendation:

- Approval



**Biltmore Company and West Range, LLC
Map Amendment**

0 0.5 1
Miles

Zoning Districts		Zoning Overlays	
CS	R-3	Blue Ridge Parkway Overlay	Protected Ridge Overlay
BDM	R-2	Protected Ridge & Parkway	Steep Slope/High Elev.
EMP	R-LD	Steep Slope/High Elev. & Pkwy	
NS			
R-1	PS		
CITY OF ASHEVILLE	OU		

Case Number: ZPH2014-00013
 Approximate Property Size: 6,713.5 acres
 Application Date: February 18, 2014
 Planning Board Hearing Date: April 7, 2014



Created By: Buncombe County Planning
 Date: March 7, 2014