

# Bruce C. Jones

## Map 1: Topography

### Requested Zoning:

- Commercial Service District CS

### Current Zoning:

- Residential District R-3

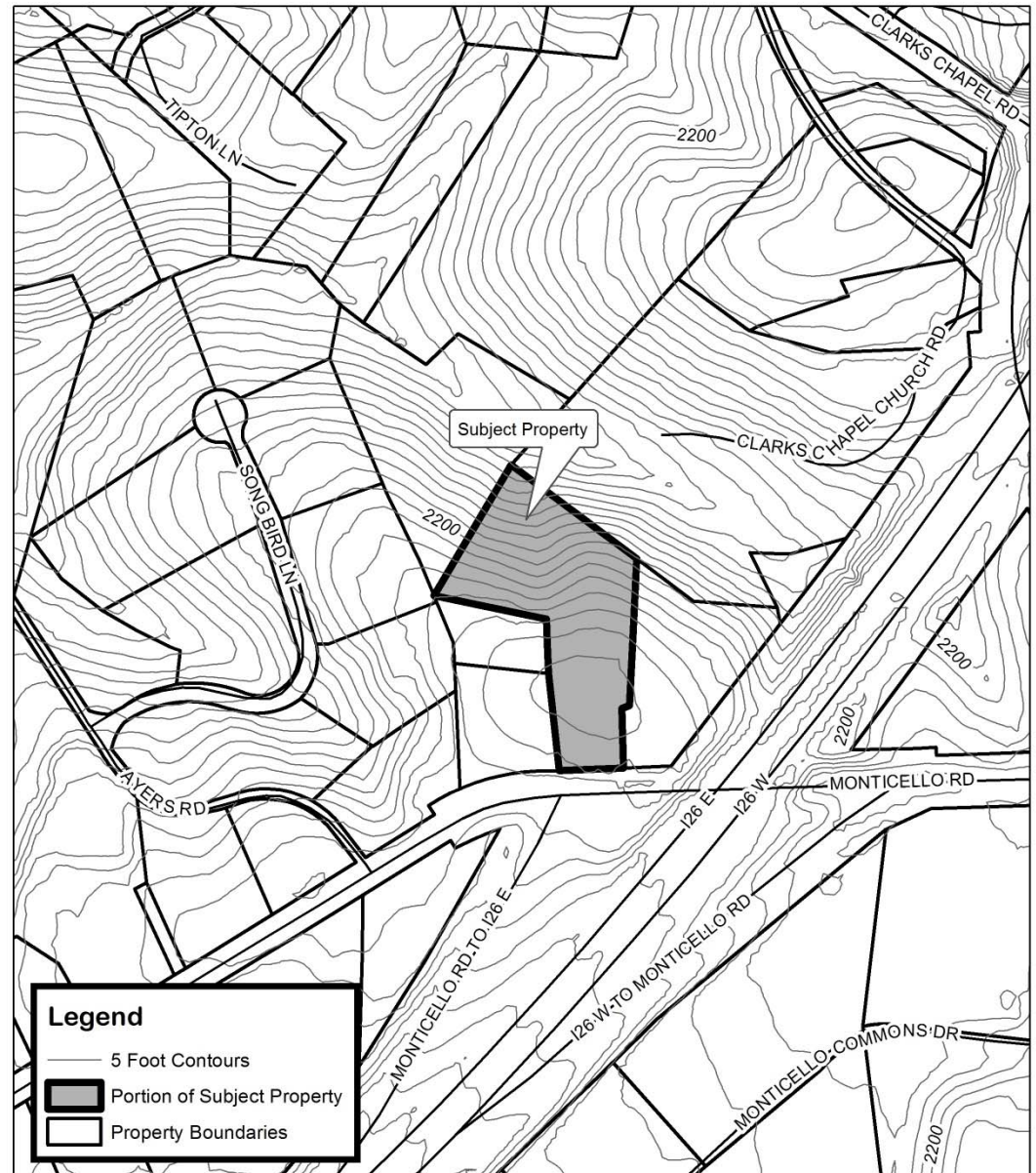
### Staff Recommendation:

- Approval

### Planning Board

### Recommendation:

- Approval



### Bruce C. Jones Map Amendment

Case Number: ZPH2014-00082

Approximate Property Size: 2.67 acres

Application Date: February 5, 2015

Planning Board Hearing Date: March 16, 2015

Created By: Buncombe County Planning  
Date: February 25, 2015

# Bruce C. Jones

## Map 2: Aerial Photo

### Requested Zoning:

- Commercial Service District CS

### Current Zoning:

- Residential District R-3

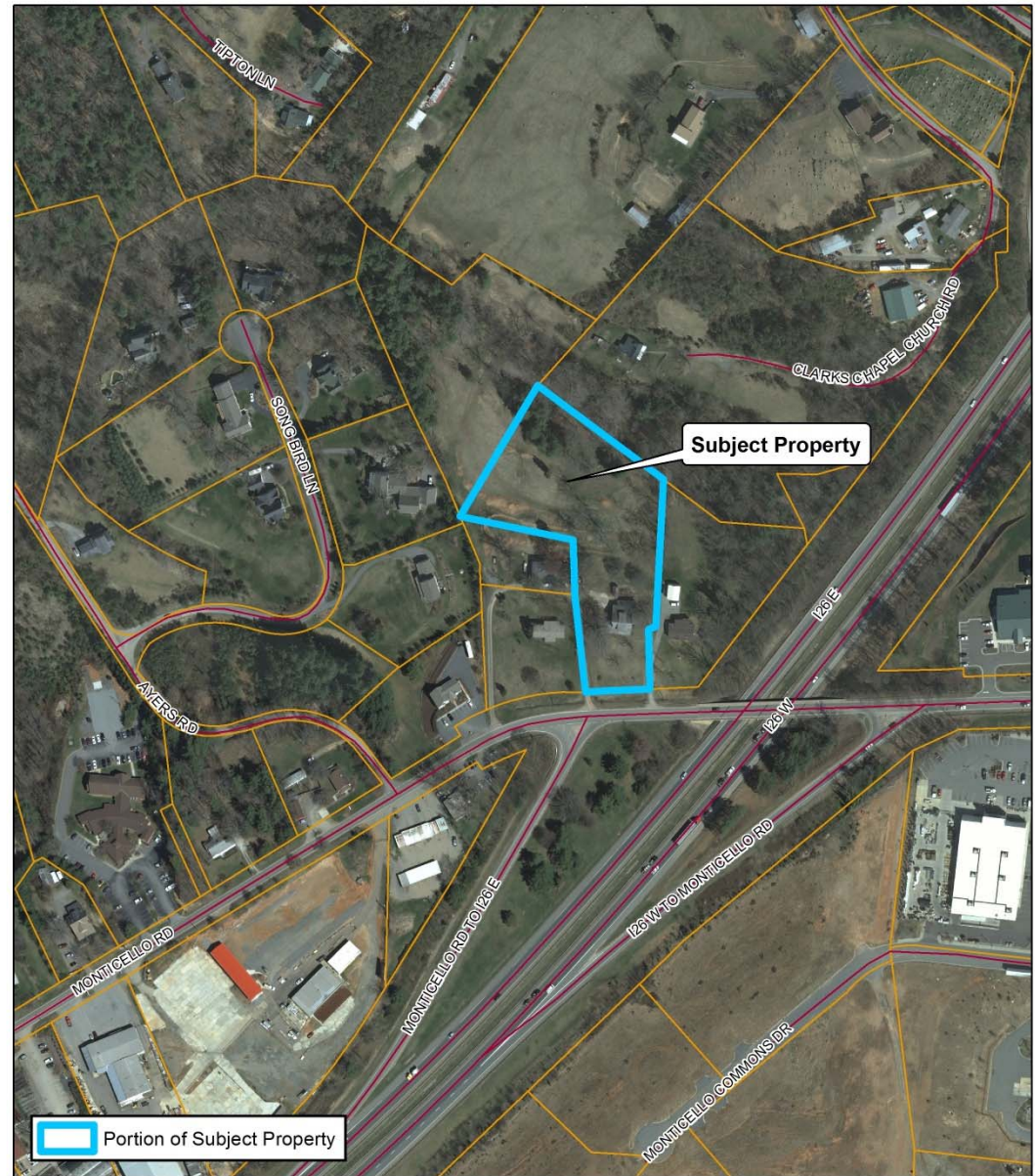
### Staff Recommendation:

- Approval

### Planning Board

### Recommendation:

- Approval



### Bruce C. Jones Map Amendment

Case Number: ZPH2014-00082

Approximate Property Size: 2.67 acres

Application Date: February 5, 2015

Planning Board Hearing Date: March 16, 2015



0 100 200 400  
Feet

Created By: Buncombe County Planning  
Date: February 25, 2015

# Bruce C. Jones

## Map 3: Land Use Constraints

### Requested Zoning:

- Commercial Service District CS

### Current Zoning:

- Residential District R-3

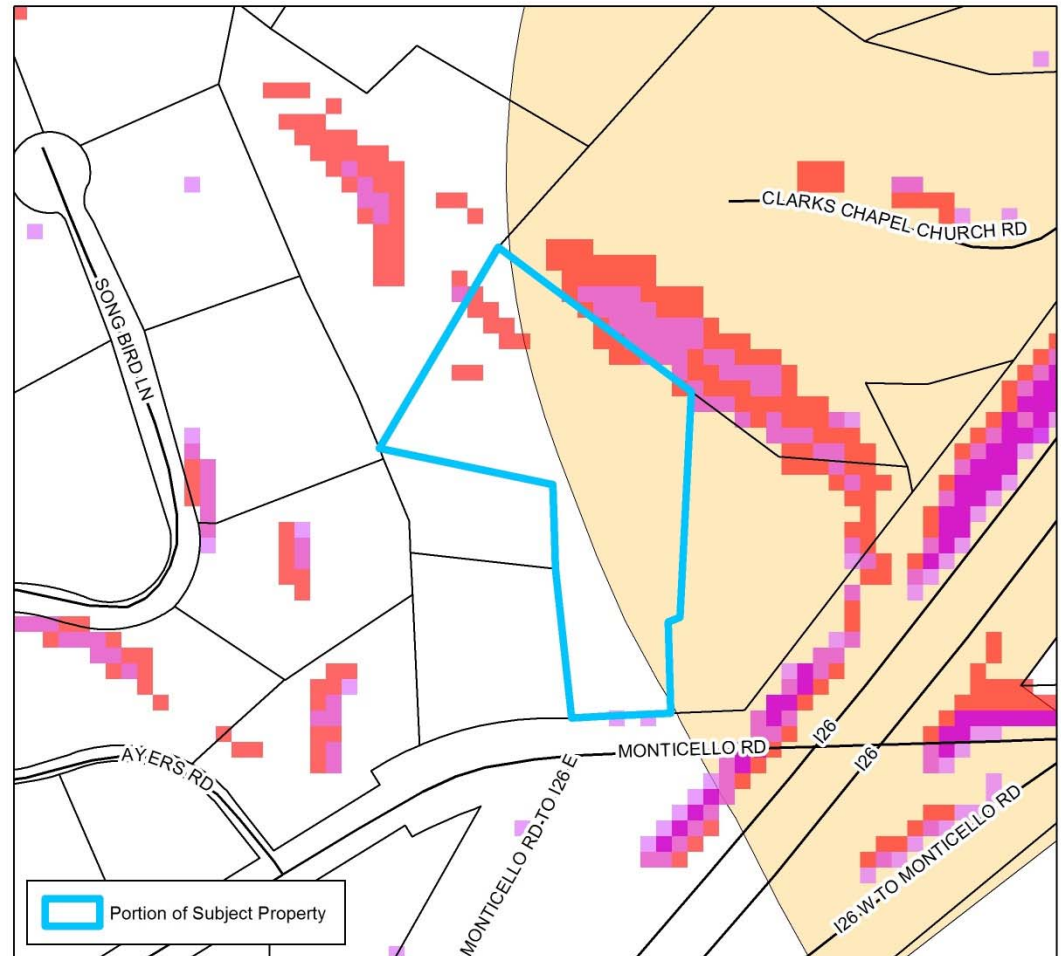
### Staff Recommendation:

- Approval

### Planning Board Recommendation:

### Recommendation:

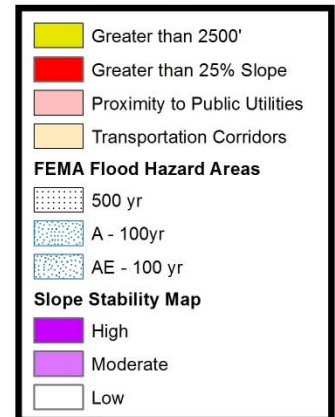
- Approval



### Bruce C. Jones Map Amendment

Case Number: ZPH2014-00082  
Approximate Property Size: 2.67 acres  
Application Date: February 5, 2015  
Planning Board Hearing Date: March 16, 2015

Created By: Buncombe County Planning  
Date: February 25, 2015



# Bruce C. Jones

## Map 4: Zoning

### Requested Zoning:

- Commercial Service District CS

### Current Zoning:

- Residential District R-3

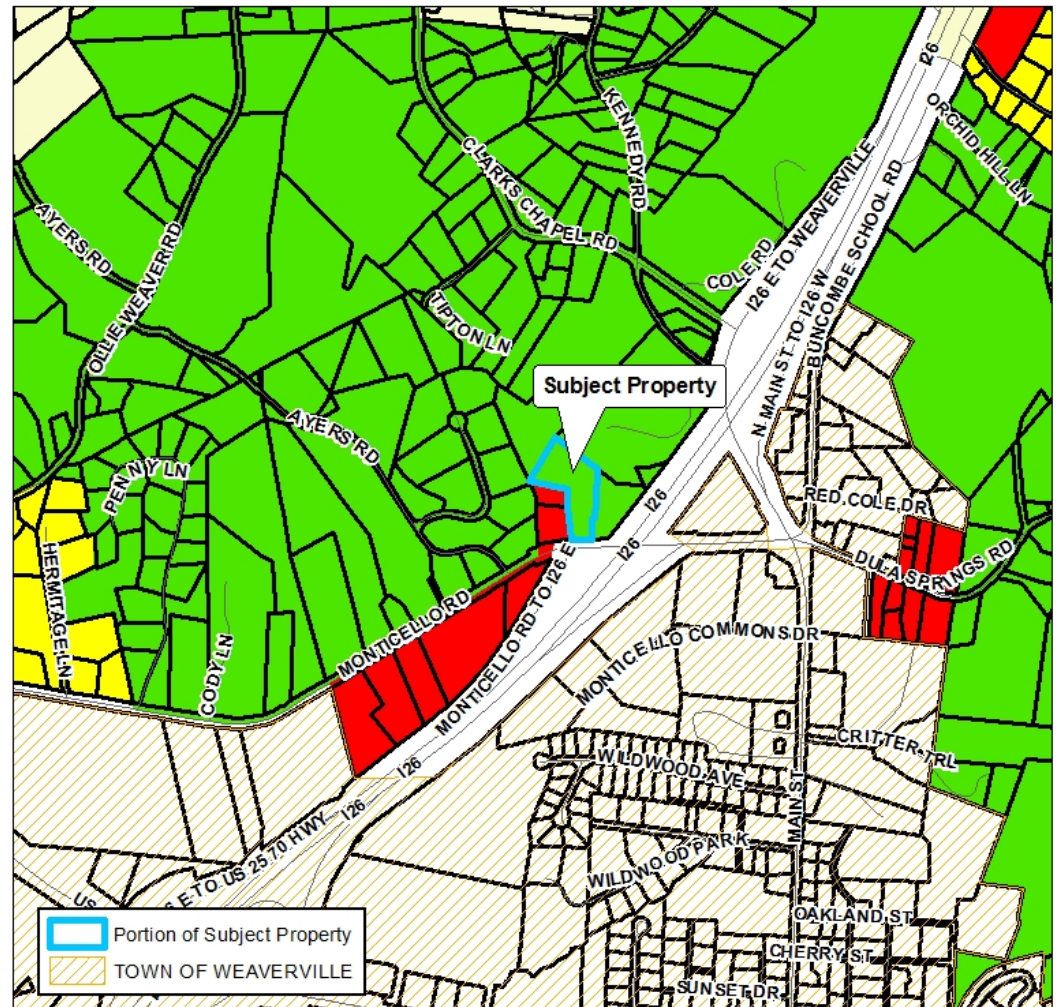
### Staff Recommendation:

- Approval

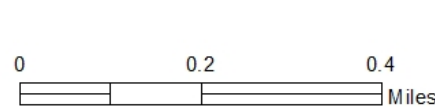
### Planning Board

### Recommendation:

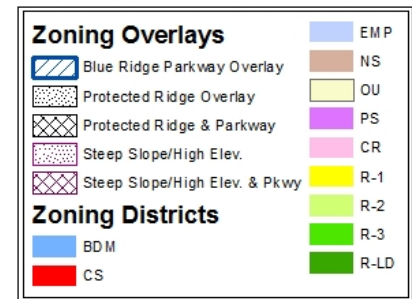
- Approval



### Bruce C. Jones Map Amendment



Case Number: ZPH2014-00082  
 Approximate Property Size: 2.67 acres  
 Application Date: February 5, 2015  
 Planning Board Hearing Date: March 16, 2015



Created By: Buncombe County Planning  
 Date: March 19, 2015