

Former Weaverville ETJ, Various Applicants

Map 1: Topography

Requested Zoning:

- Single Family Residential District R-1

Current Zoning:

- Residential District R-2

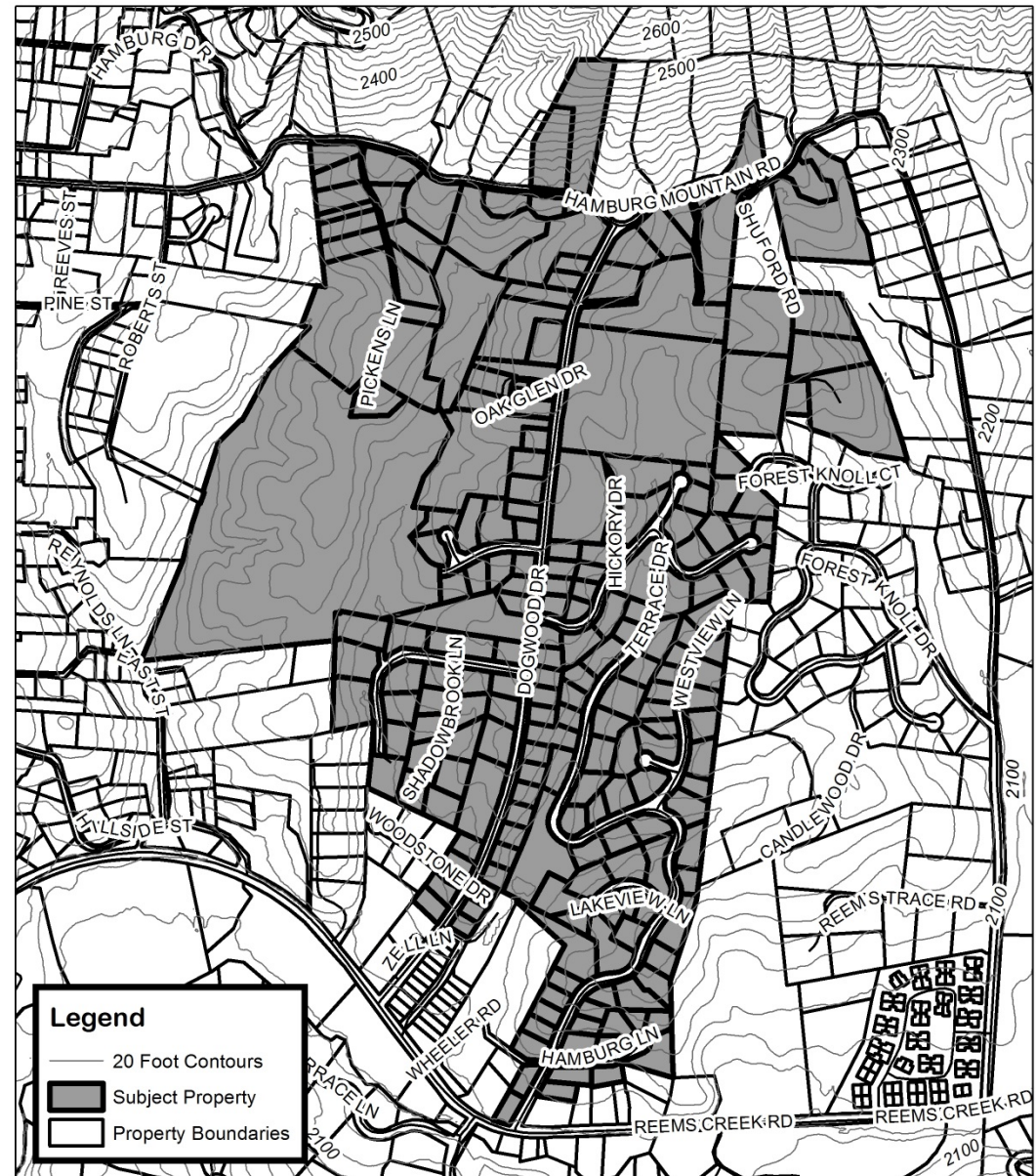
Staff Recommendation:

- Approval

Planning Board Recommendation:

Recommendation:

- Approval



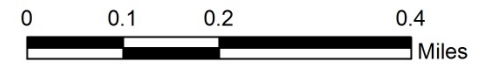
Former Weaverville ETJ, Various Applicants Map Amendment

Case Number: ZPH2014-00074

Approximate Property Size: 253.29 acres

Application Date: October 14, 2014

Planning Board Hearing Date: January 26, 2015



Created By: Buncombe County Planning
Date: January 13, 2015

Former Weaverville ETJ, Various Applicants

Map 2: Aerial Photo

Requested Zoning:

- Single Family Residential District R-1

Current Zoning:

- Residential District R-2

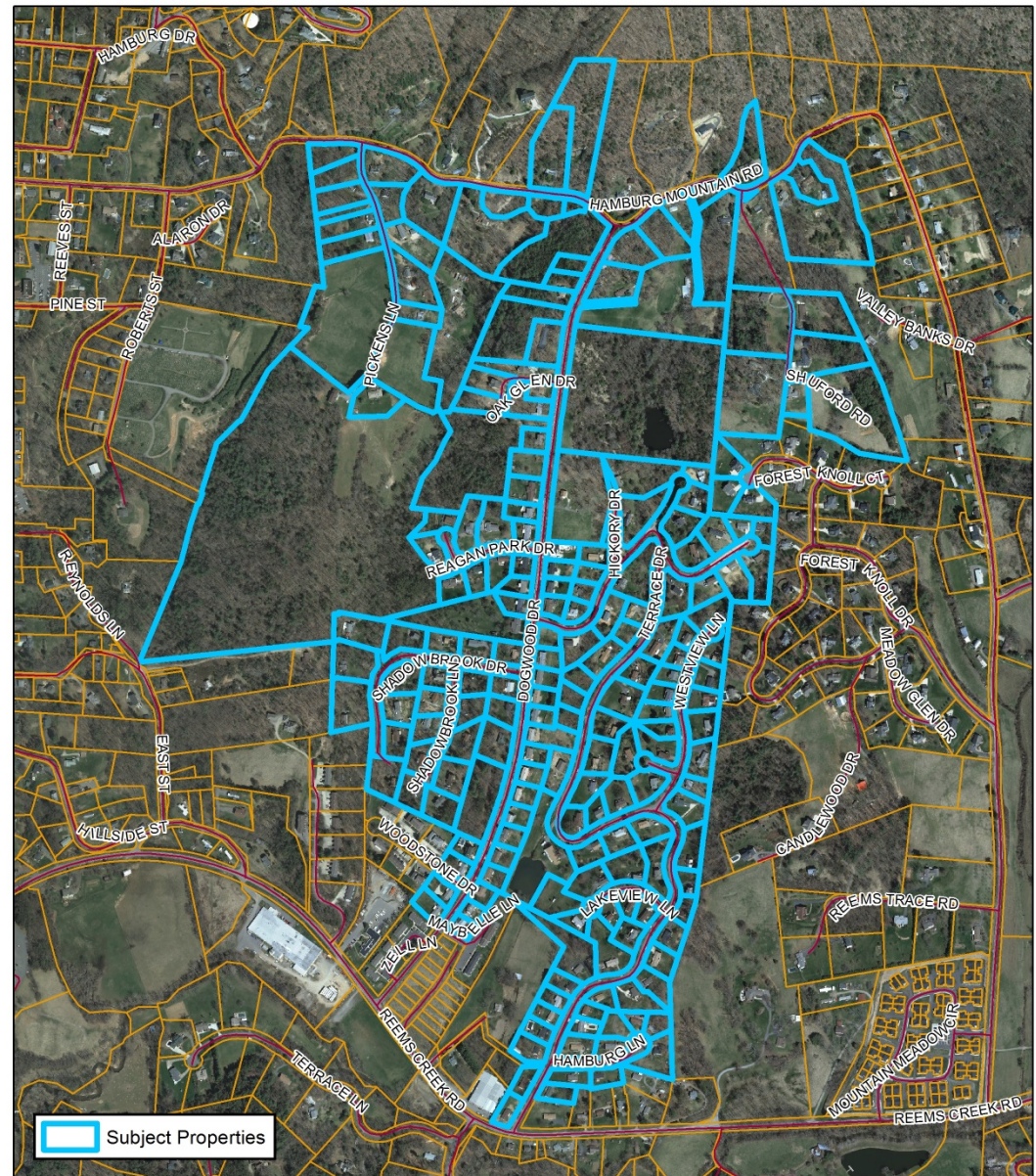
Staff Recommendation:

- Approval

Planning Board Recommendation:

Recommendation:

- Approval



Former Weaverville ETJ, Various Applicants Map Amendment

Case Number: ZPH2014-00074

Approximate Property Size: 253.29 acres

Application Date: October 14, 2014

Planning Board Hearing Date: January 26, 2015



0 0.1 0.2 0.4
Miles

Created By: Buncombe County Planning
Date: January 13, 2015

Former Weaverville ETJ, Various Applicants

Map 3: Land Use Constraints

Requested Zoning:

- Single Family Residential District R-1

Current Zoning:

- Residential District R-2

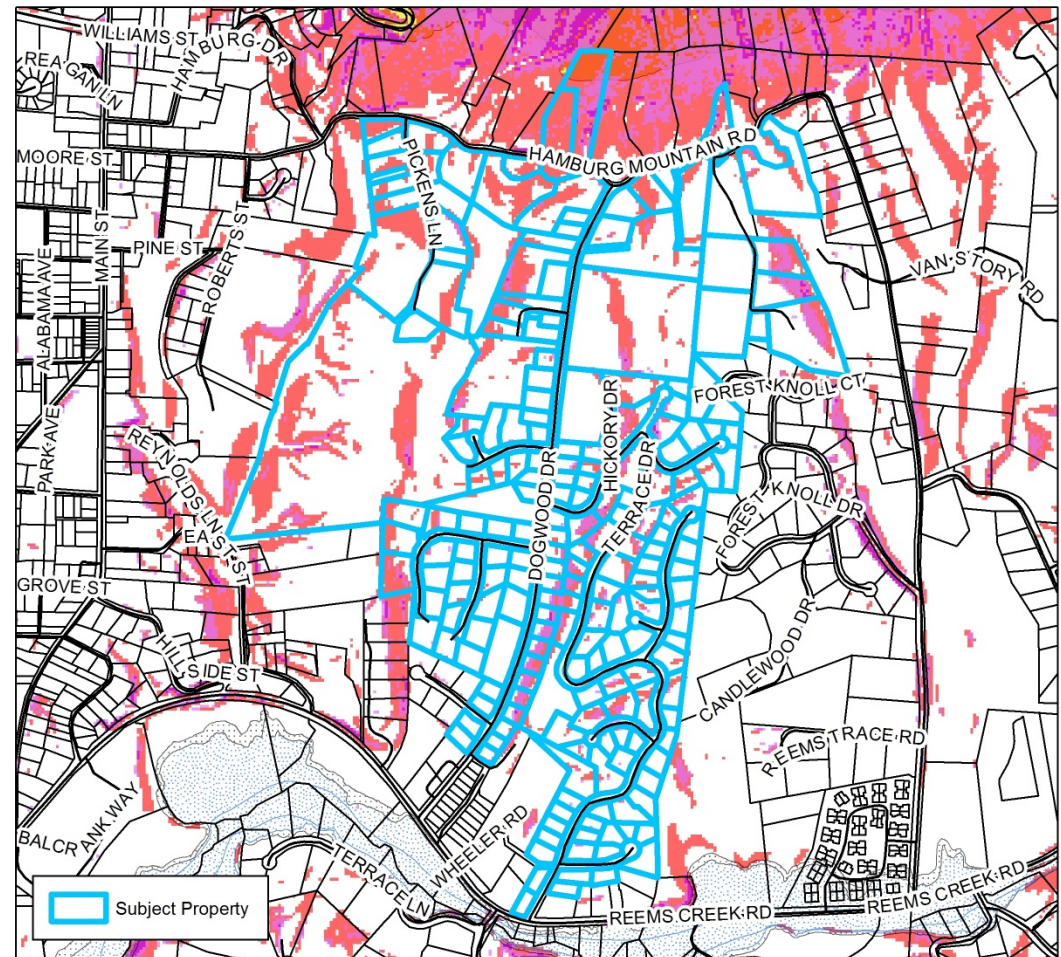
Staff Recommendation:

- Approval

Planning Board Recommendation:

Recommendation:

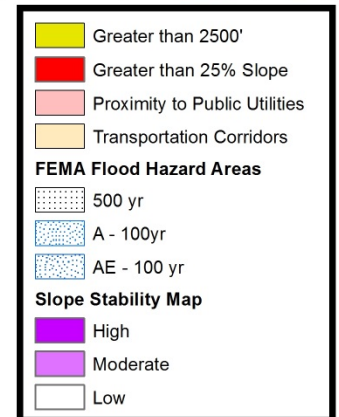
- Approval



Former Weaverville ETJ, Various Applicants Map Amendment

Case Number: ZPH2014-00074
 Approximate Property Size: 253.29 acres
 Application Date: October 14, 2014
 Planning Board Hearing Date: January 26, 2015

Created By: Buncombe County Planning
 Date: January 13, 2015



Former Weaverville ETJ, Various Applicants Map 4: Zoning

Requested Zoning:

- Single Family Residential District R-1

Current Zoning:

- Residential District R-2

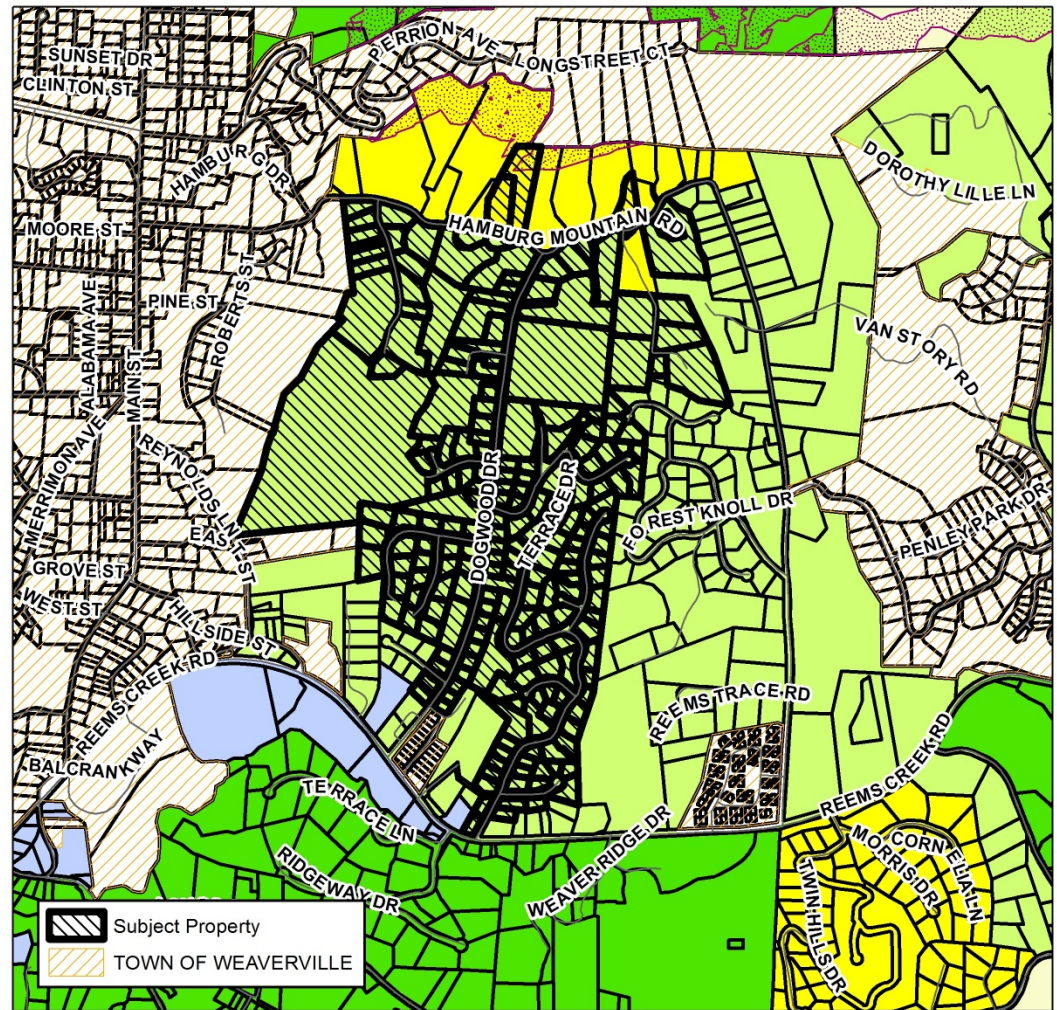
Staff Recommendation:

- Approval

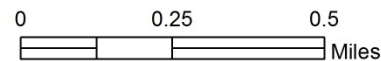
Planning Board Recommendation:

Recommendation:

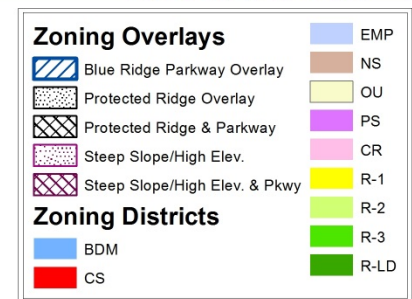
- Approval



Former Weaverville ETJ, Various Applicants Map Amendment



Case Number: ZPH2014-00074
 Approximate Property Size: 253.29 acres
 Application Date: October 14, 2014
 Planning Board Hearing Date: January 26, 2015



Created By: Buncombe County Planning
 Date: January 13, 2015