

# Lifeway Christian Resources

## Map 1: Topography

### Requested Zoning:

- Conference Center / Resort District CR

### Current Zoning:

- Single Family Residential District R-1

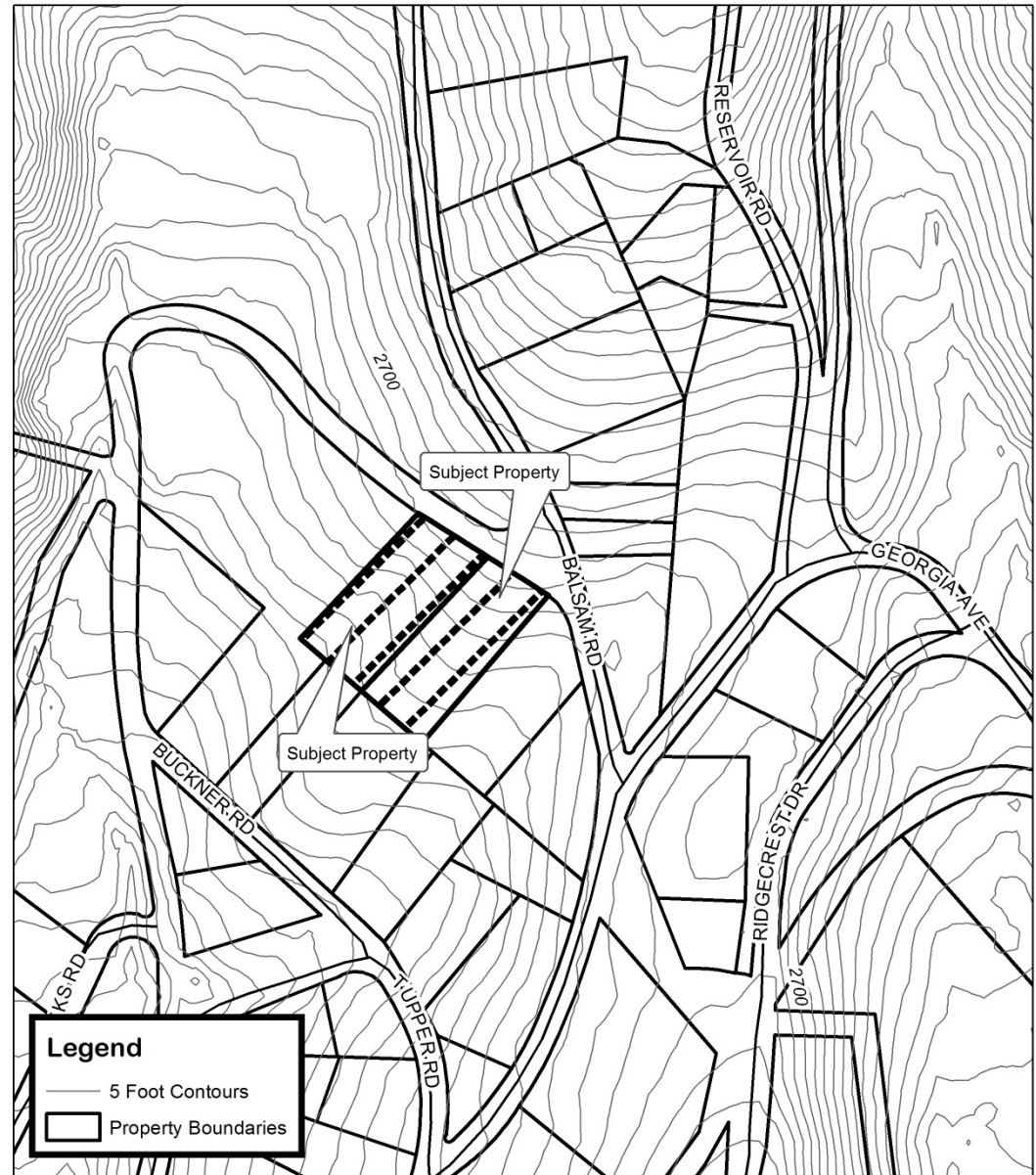
### Staff Recommendation:

- Approval

### Planning Board

### Recommendation:

- Approval



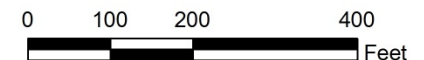
### Lifeway Christian Resources Map Amendment

Case Number: ZPH2014-00081

Approximate Property Size: 1.02 acres

Application Date: December 18, 2014

Planning Board Hearing Date: January 26, 2015



Created By: Buncombe County Planning  
Date: December 30, 2014



# Lifeway Christian Resources

## Map 2: Aerial Photo

### Requested Zoning:

- Conference Center / Resort District CR

### Current Zoning:

- Single Family Residential District R-1

### Staff Recommendation:

- Approval

### Planning Board

### Recommendation:

- Approval



### Lifeway Christian Resources Map Amendment

Case Number: ZPH2014-00081

Approximate Property Size: 1.02 acres

Application Date: December 18, 2014

Planning Board Hearing Date: January 26, 2015



0 100 200 400  
Feet

Created By: Buncombe County Planning  
Date: December 30, 2014

# Lifeway Christian Resources

## Map 3: Land Use Constraints

### Requested Zoning:

- Conference Center / Resort District CR

### Current Zoning:

- Single Family Residential District R-1

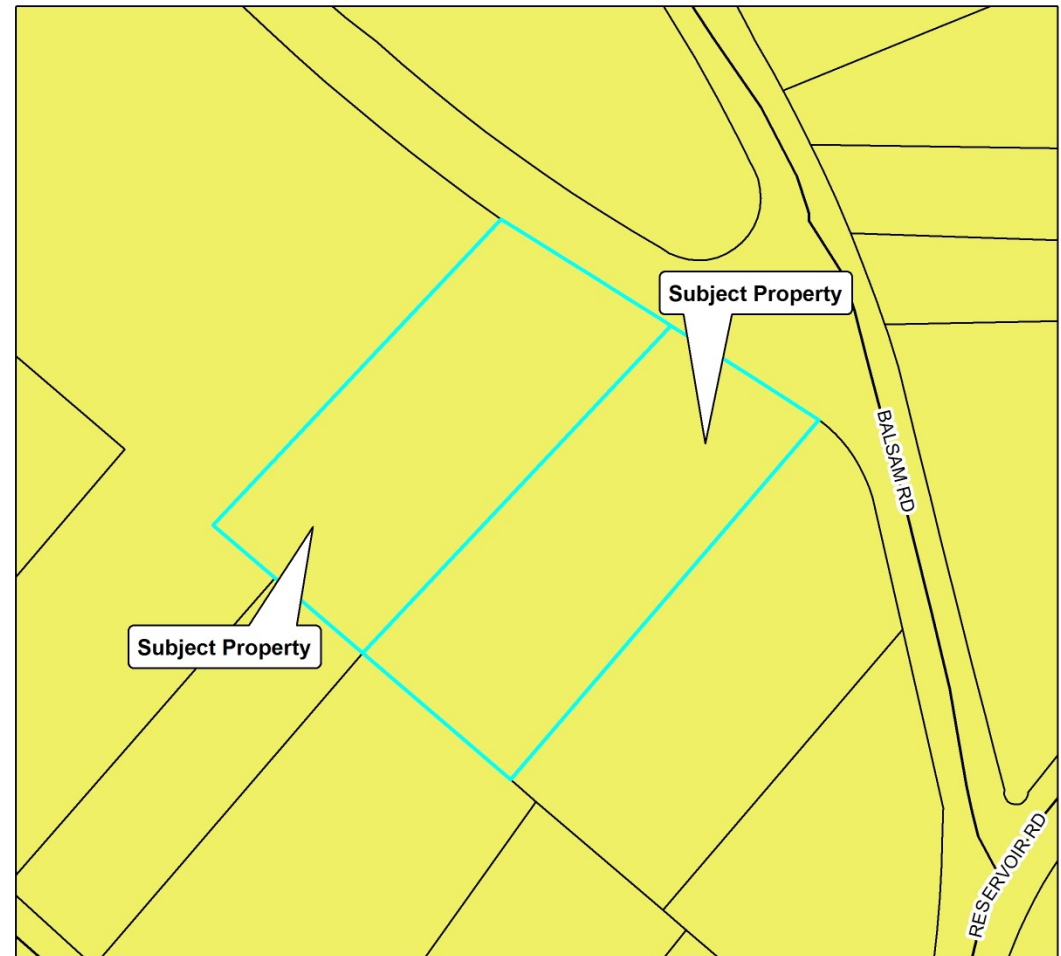
### Staff Recommendation:

- Approval

### Planning Board

### Recommendation:

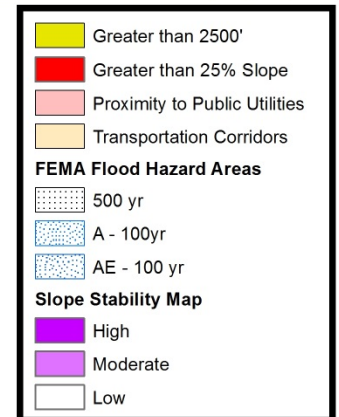
- Approval



### Lifeway Christian Resources Map Amendment

Case Number: ZPH2014-00081  
Approximate Property Size: 1.02 acres  
Application Date: December 18, 2014  
Planning Board Hearing Date: January 26, 2015

Created By: Buncombe County Planning  
Date: December 30, 2014





# Lifeway Christian Resources

## Map 4: Zoning

### Requested Zoning:

- Conference Center / Resort District CR

### Current Zoning:

- Single Family Residential District R-1

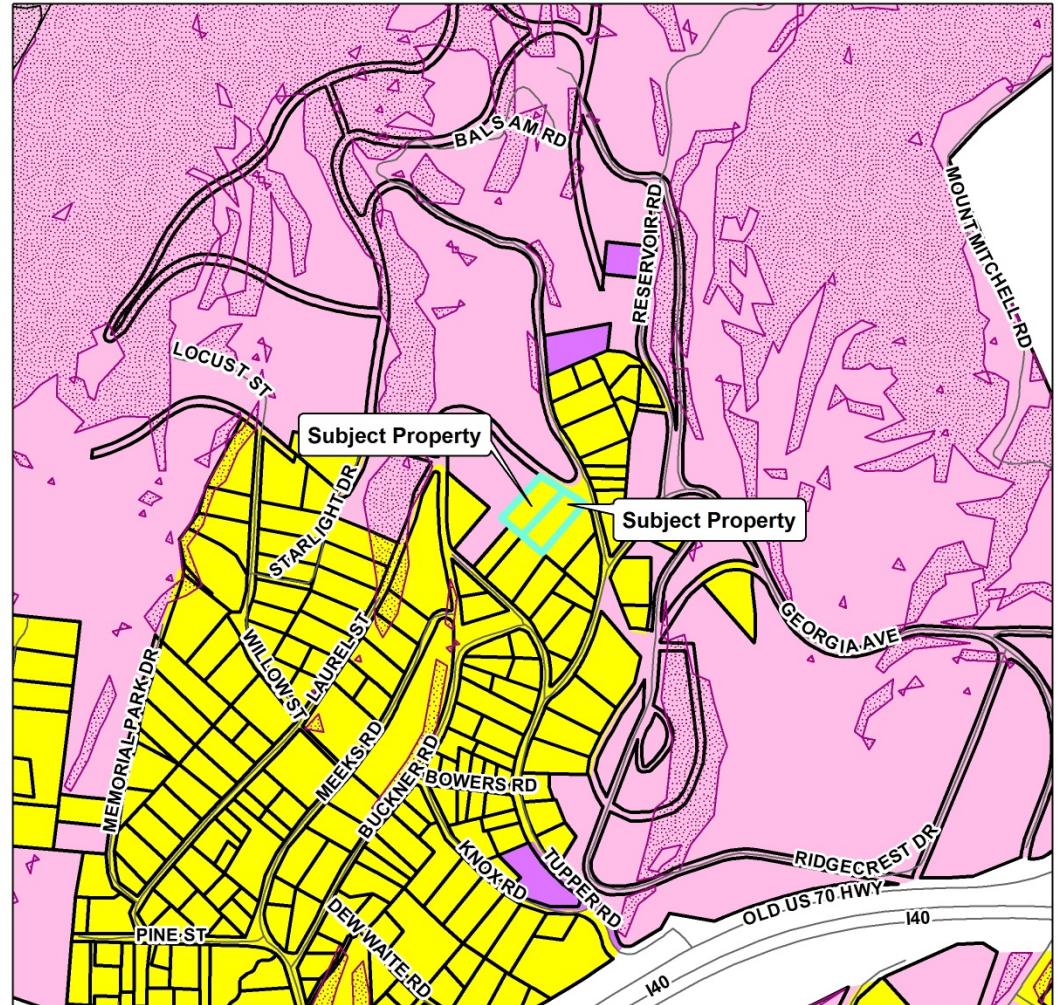
### Staff Recommendation:

- Approval

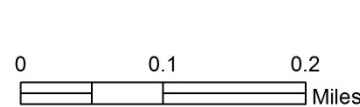
### Planning Board Recommendation:

### Recommendation:

- Approval



**Lifeway Christian Resources  
Map Amendment**



Case Number: ZPH2014-00081  
 Approximate Property Size: 1.02 acres  
 Application Date: December 18, 2014  
 Planning Board Hearing Date: January 26, 2015

Zoning Overlays	
	Blue Ridge Parkway Overlay
	Protected Ridge Overlay
	Protected Ridge & Parkway
	Steep Slope/High Elev.
	Steep Slope/High Elev. & Pkwy
Zoning Districts	
	BDM
	CS
	EMP
	NS
	OU
	PS
	CR
	R-1
	R-2
	R-3
	R-LD

Created By: Buncombe County Planning  
 Date: December 30, 2014