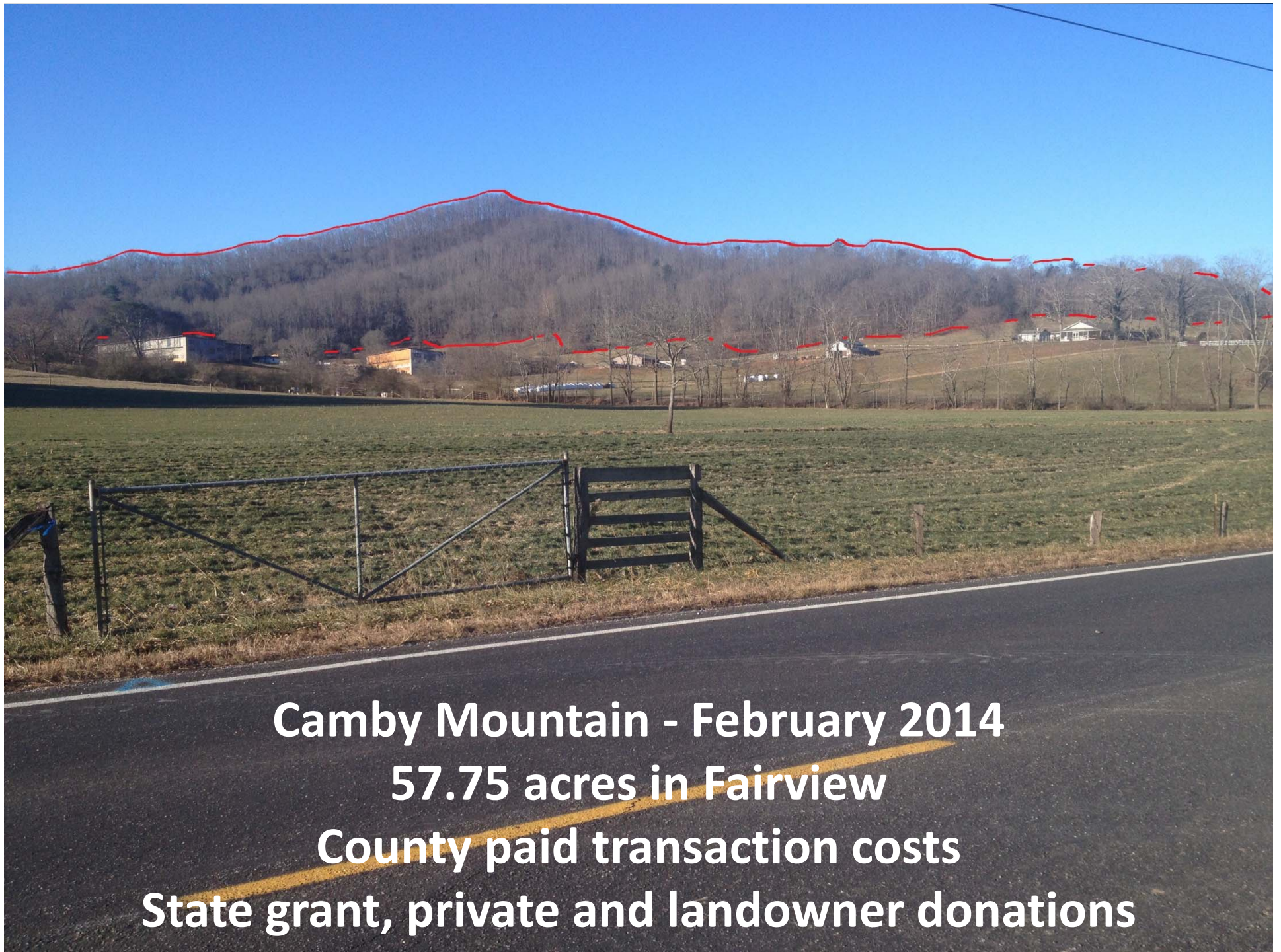


# Protecting Treasured Land Across Our County





**Camby Mountain - February 2014**

**57.75 acres in Fairview**

**County paid transaction costs**

**State grant, private and landowner donations**

**Grogan Farm - November 2014**  
**80.83 acres in Sandy Mush**  
**County paid transaction costs**  
**Federal grant, private and landowner donations**





**Watalula (Jeffers) Farm Phase II- December 2014**  
**38.43 acres in Leicester**  
**County paid transaction costs**  
**Federal & State grants, landowner donation**



**Early View Farm - December 2014**  
**110.87 acres in Sandy Mush**  
**County paid transaction costs**  
**100% Landowner donation**

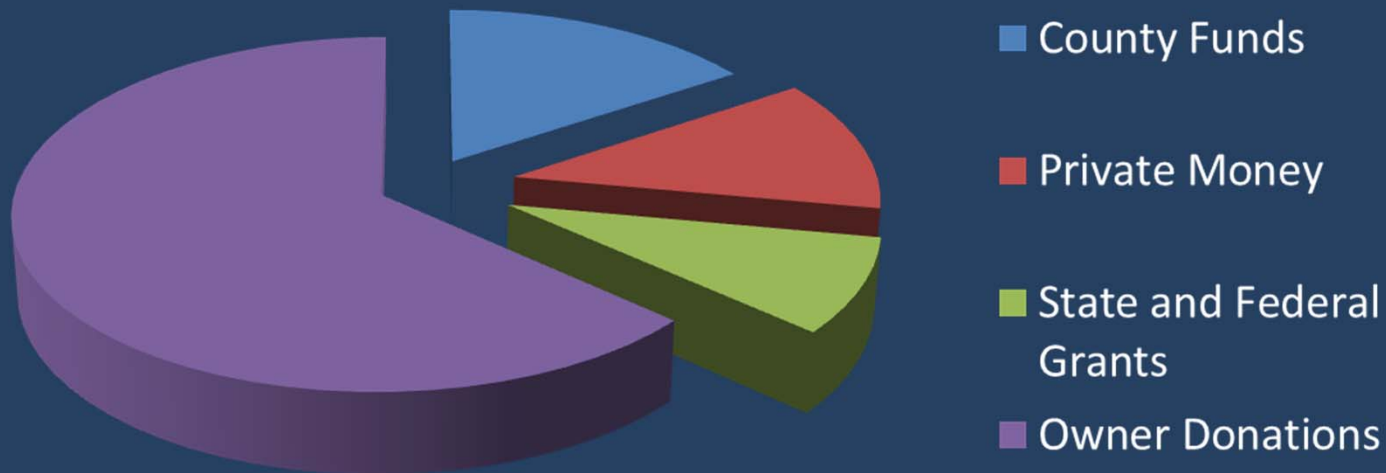
# Progress to Date

- 420,269 acres in the County
- 2004
  - Inventory of conserved land
  - 57,238 acres protected
- 2014
  - 289 additional acres protected
  - 73,318 total acres protected



# Progress to Date

- County funding
  - 39 projects
  - 5,561 acres
  - 16%
- Other funding
  - Private money: 12%
  - Federal and State grants: 9%
  - Owner donations: 63%



**CONSERVATION EASEMENT  
FUNDING REQUEST**

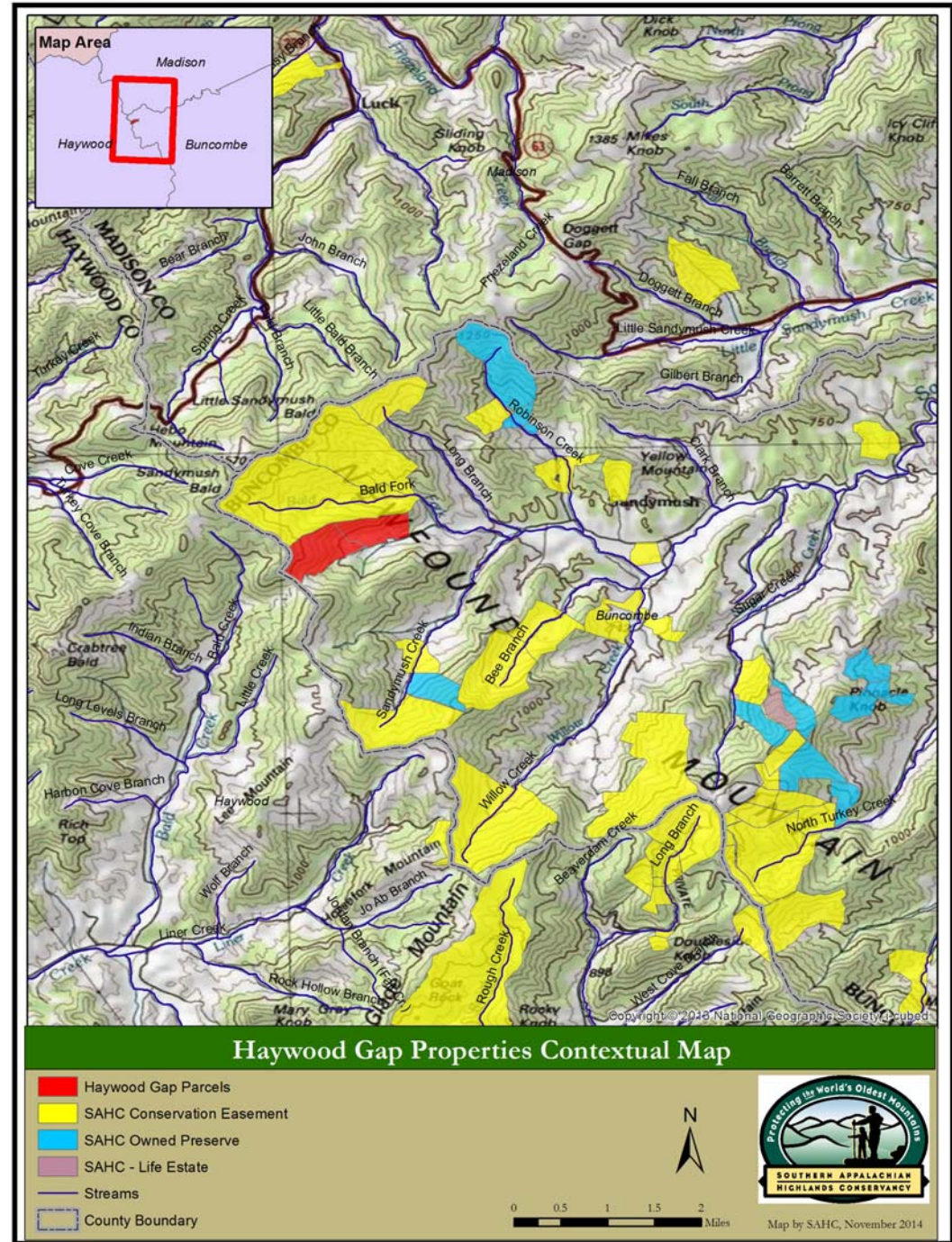


# Haywood Gap

Two adjoining tracts

241 acres in Sandy  
Mush

Adjacent to 594 acre  
conservation  
easement



## Haywood Gap

- Recommended by the Land Conservation Advisory Board
- In Conservation Focus Area
- Highly visible
- Priority wildlife habitat
- Five headwater tributaries of Bald Fork



## Haywood Gap

- Estimated easement values \$700,000
- Requesting \$35,000 for transaction costs
- Leveraged funds:
  - Landowners donations \$395,000 (56% of value)
  - Private donation \$361,400





**Thank You**

**Celebrating Donors &  
Continued County Leadership**