


General Services Home Page

The screenshot shows a SharePoint page for Buncombe County General Services. The top navigation bar includes 'Buncombe County', 'Newsfeed', 'OneDrive', and 'Sites'. The user 'Greg Isreal (Paul G.)' is logged in. Below the navigation bar, there are links for 'GENERAL SERVICES', 'Emission Summary', 'Facilities', 'Fleet Overview', 'Fleet Maintenance', 'Facility List', and 'Select to Input New Utility Bill'. The main content area features a large heading 'GENERAL SERVICES' and a sub-heading 'WELCOME TO THE BUNCOMBE COUNTY GENERAL SERVICES PAGE'. A left-hand navigation menu lists 'GENERAL SERVICES', 'Fleet Ad Hoc Report Generator', 'Documents', 'Utility Bills', 'Conversion Factors', and 'Site Contents'. The main text explains that the page displays performance reports for the General Services Department and lists three categories: FACILITIES, ENERGY USE, and FLEET. Below this, there is a section for 'ENERGY NEWS' with a sub-heading 'Today in Energy' and three news items.

Buncombe County Newsfeed OneDrive Sites Greg Isreal (Paul G.)

BROWSE PAGE SHARE FOLLOW

 GENERAL SERVICES Emission Summary Facilities Fleet Overview Fleet Maintenance Facility List Select to Input New Utility Bill

GENERAL SERVICES

GENERAL SERVICES

- Fleet Ad Hoc Report Generator
- Documents
- Utility Bills
- Conversion Factors
- Site Contents

WELCOME TO THE BUNCOMBE COUNTY GENERAL SERVICES PAGE

This page displays performance reports for the General Services Department. Specific reports available are listed below.

- FACILITIES:** Listing of Buncombe County facilities including square footage, benchmarks, and usage.
- ENERGY USE:** Reports displaying energy usage for facilities and fleet.
- FLEET:** Reports displaying fleet mileage, mileage per gallon, and age.

Please use the navigation ribbon to view performance metrics, existing facilities, and other reports.

ENERGY NEWS

Today in Energy

Regional refinery trends evolve to accommodate increased domestic crude oil production

Market expectations of oil price uncertainty have increased in recent months

Because of cold start, average natural gas spot prices were higher in 2014

Buncombe County Emissions Summary

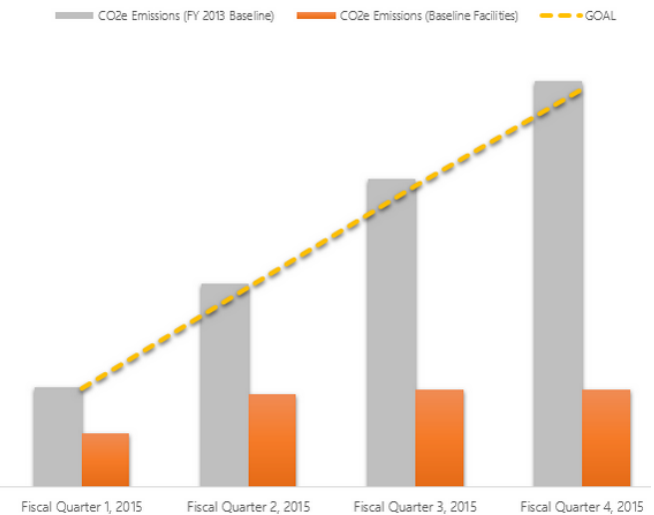


Emission Summary

BUNCOMBE COUNTY CARBON FOOTPRINT

	2013 BASELINE	PERIOD TO DATE
FACILITIES	10,399.06	4,096.88
	+	+
FLEET	4,688.81	2,892.69
	=	=
TOTAL	15,087.88	6,989.58

BASELINE v. ACTUAL



Facility Energy Usage



Facility Energy Usage

HOW ARE WE PERFORMING?

DRAFT DATA - UNDER DEVELOPMENT

Select a Fiscal Year

2017	2016	2015
2014	2013	2012

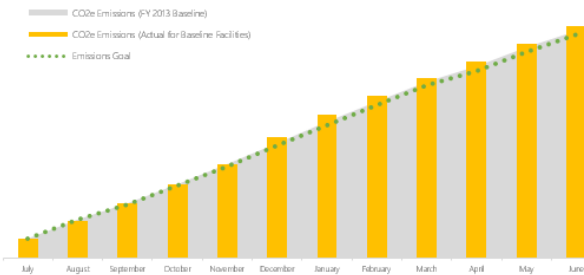
Total Energy Cost	Cost % Change	Emissions % Change from 2013 Baseline	Cost per Square Foot	Energy Star Energy Usage Intensity (EUI) Standards	Facilities
<i>Total Billings for Period Selected</i>	<i>Selected Year to Prior Year</i>	<i>Selected Year to 2013 (Baseline)</i>	<i>Mid and Large Sized Buildings</i>	<i># of Buildings Meeting Standard</i>	<i># Active</i> <i>Active Floor Area (sq ft)</i>
\$2,013,592	6.49%	2.02%	\$1.11	49	85 1,716,679

Top 5 Buildings by Cost

Building	Cost
1 Detention Center A	\$293,600.75
2 Courthouse	\$238,870.06
3 Detention Center B	\$148,715.39
4 Tax Office/Register of Deeds	\$133,878.02
5 200 College St	\$123,777.17

[View Additional Cost Data >>>](#)

CO2e Emissions Actual vs. Goal



Top 5 Buildings by Energy Intensity (kBTU/SQFT)

Building	kBTU / SQFT
1 Interchange Building	101.20
2 Sheriff's Office	79.70
3 Soccer Complex (storage)	70.95
4 Detention Center A	68.39
5 Animal Shelter	63.24

[View Additional EUI Data >>>](#)

Other Reports

[View County-wide Emissions >>>](#)

[All Facilities Emissions % Change >>>](#)

[Show Comparison](#)

[View Technical Details](#)

Facility Cost by Fiscal Year



Facility Energy Usage

Utility Trac: Cost by Fiscal Year

Displays cost by year.

Building Size Category All

Row Labels	2012		2013		2014		2015	
	Cost by Place Code	% of Cost	Cost by Place Code	% of Cost	Cost by Place Code	% of Cost	Cost by Place Code	% of Cost
200 College St	\$20,067.35	1.11 %	\$18,500.16	0.98 %	\$16,564.71	0.82 %	\$5,736.59	0.74 %
ELECTRIC	\$87,674.44	4.83 %	\$68,863.66	3.66 %	\$70,505.00	3.50 %	\$30,217.73	3.90 %
NATURALGAS	\$46,015.91	2.54 %	\$46,172.39	2.45 %	\$49,004.81	2.43 %	\$17,986.33	2.32 %
WATER	\$5,376.25	0.30 %	\$4,931.61	0.26 %	\$4,267.36	0.21 %	\$1,028.12	0.10 %
356 Biltmore	\$57,783.50	3.18 %	\$64,658.26	3.43 %	\$64,713.81	3.21 %	\$20,579.61	2.66 %
Allport Building	\$39,686.74	2.19 %	\$54,237.60	2.88 %	\$61,836.08	3.07 %	\$24,537.87	3.17 %
Animal Shelter	\$76,814.62	4.23 %	\$84,411.54	4.48 %	\$93,638.07	4.65 %	\$37,229.92	4.80 %
Ballfield - Seasonal	\$466.23	0.03 %	\$262.39	0.01 %	\$508.37	0.03 %	\$118.60	0.02 %
Black Mountain Library	\$7,695.79	0.42 %	\$8,411.98	0.45 %	\$8,269.32	0.41 %	\$2,572.16	0.33 %
Cane Creek Pool	\$6,018.57	0.33 %	\$7,920.52	0.42 %	\$8,216.01	0.41 %	\$1,422.60	0.18 %
Cell Towers	\$2,266.24	0.12 %	\$14,796.79	0.79 %	\$22,674.15	1.13 %	\$8,306.39	1.07 %
Christmas Lighting - Seasonal	\$166.90	0.01 %	\$184.63	0.01 %	\$228.05	0.01 %	\$93.28	0.01 %
College St Parking Deck	\$27,375.06	1.51 %	\$26,713.76	1.42 %	\$27,608.66	1.37 %	\$9,970.86	1.29 %
County Administration	\$19,330.64	1.06 %	\$17,815.19	0.95 %	\$17,927.18	0.89 %	\$6,784.96	0.88 %
Courthouse	\$125,261.55	6.90 %	\$224,528.54	11.98 %	\$238,870.06	11.86 %	\$95,940.74	12.38 %
ELECTRIC	\$247,737.32	13.65 %	\$205,480.03	10.91 %	\$209,628.58	10.41 %	\$89,729.47	11.58 %
NATURALGAS	\$31,441.40	1.73 %	\$32,907.12	1.75 %	\$32,458.10	1.61 %	\$9,902.09	1.28 %
WATER	\$81,229.49	4.48 %	\$53,882.04	2.86 %	\$51,514.07	2.56 %	\$20,329.52	2.62 %
Detention Center B	\$150,666.79	8.30 %	\$143,818.12	7.64 %	\$148,715.39	7.39 %	\$59,694.61	7.70 %
DSS	\$103,770.91	5.72 %	\$102,151.39	5.43 %	\$98,088.71	4.87 %	\$32,718.67	4.22 %
DSS West	\$16,653.14	0.92 %	\$15,018.47	0.80 %	\$14,806.60	0.74 %	\$6,600.52	0.85 %
EMS	\$3,936.80	0.22 %	\$8,002.31	0.43 %	\$9,075.96	0.45 %	\$2,145.14	0.28 %
Emp 011 Center	\$22,165.06	1.22 %	\$26,005.22	1.37 %	\$27,024.26	1.33 %	\$14,222.28	1.85 %

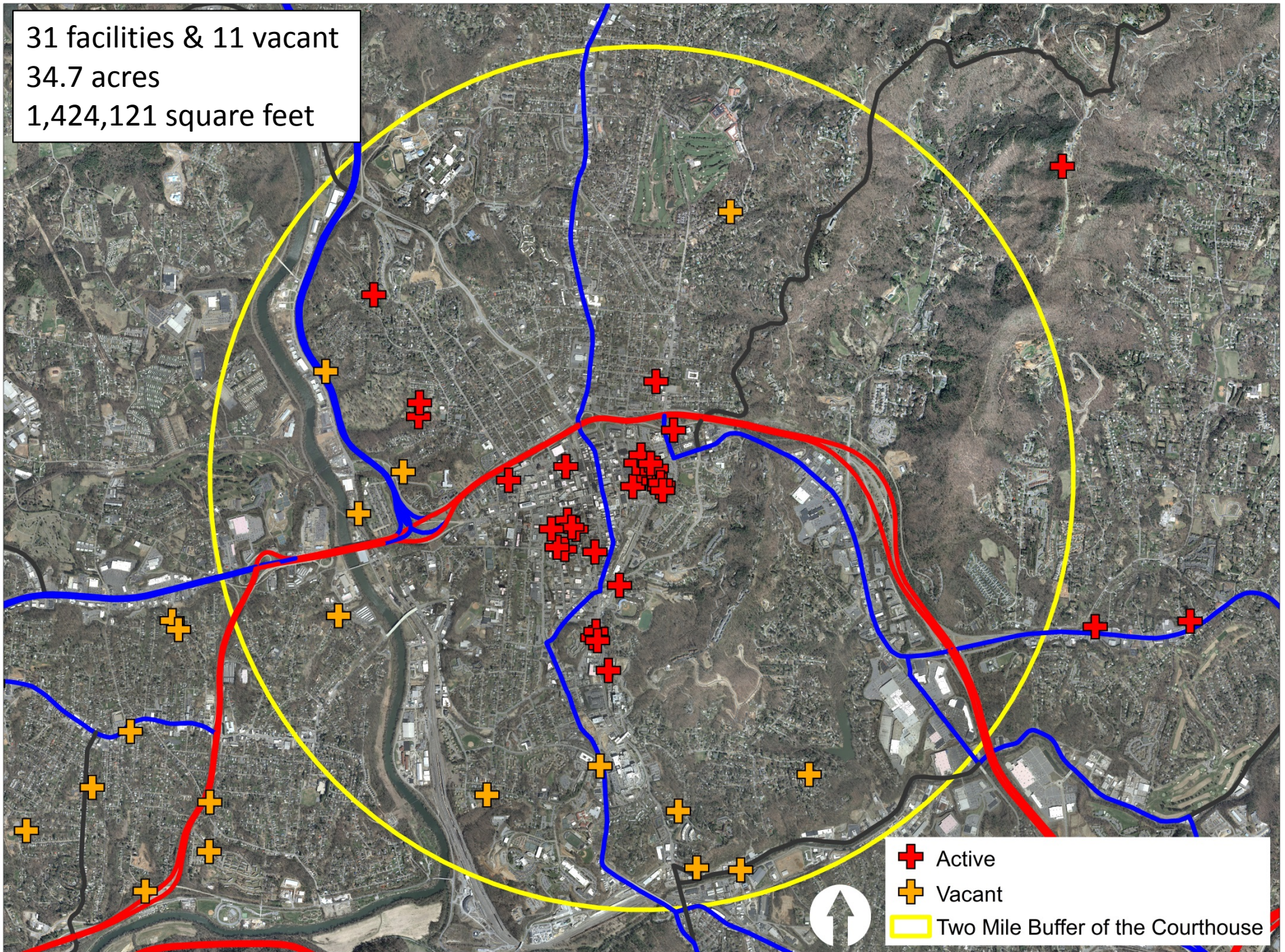
23 facilities
24.38 acres
1,306,716 square feet



Active
Vacant

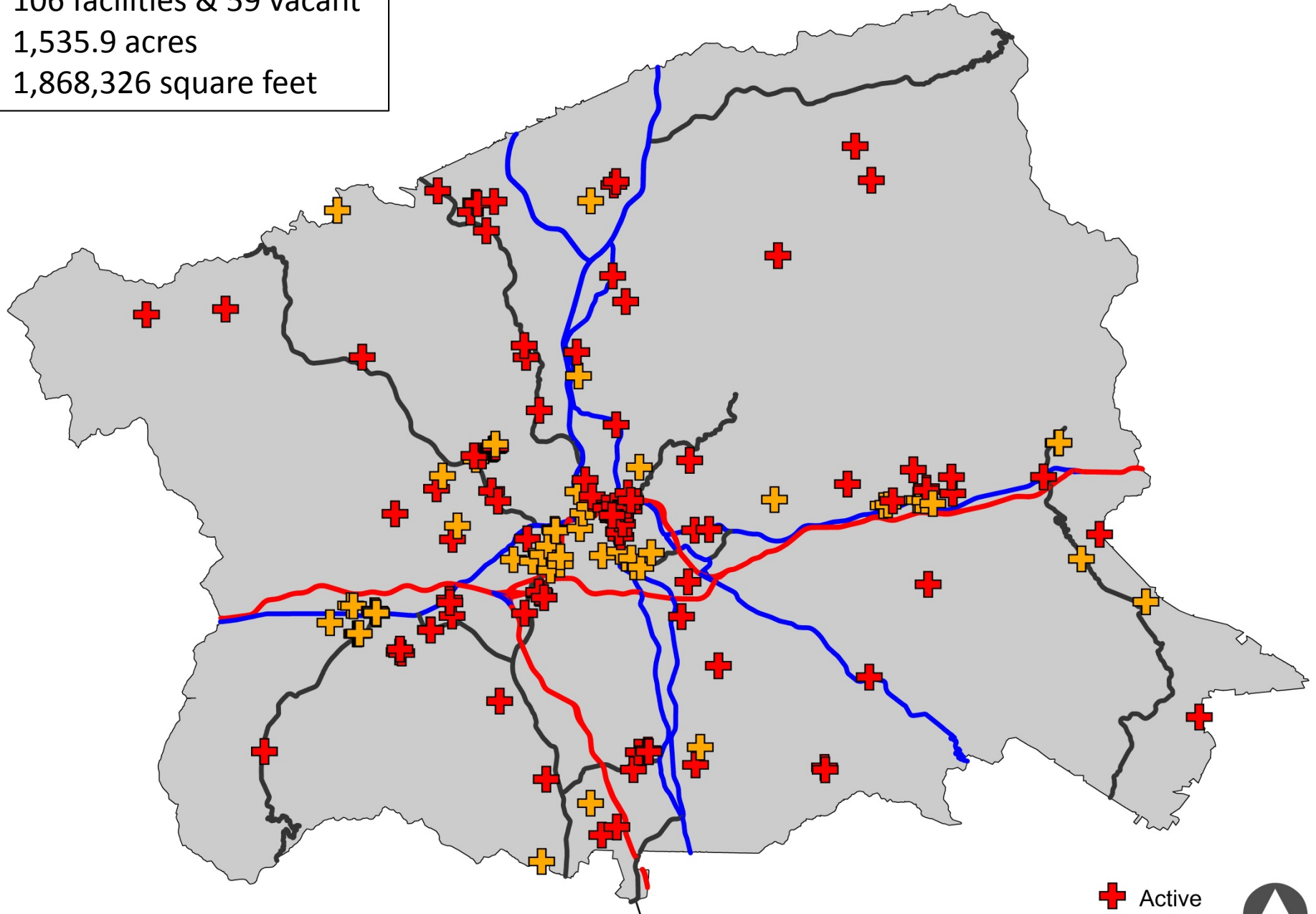


31 facilities & 11 vacant
34.7 acres
1,424,121 square feet



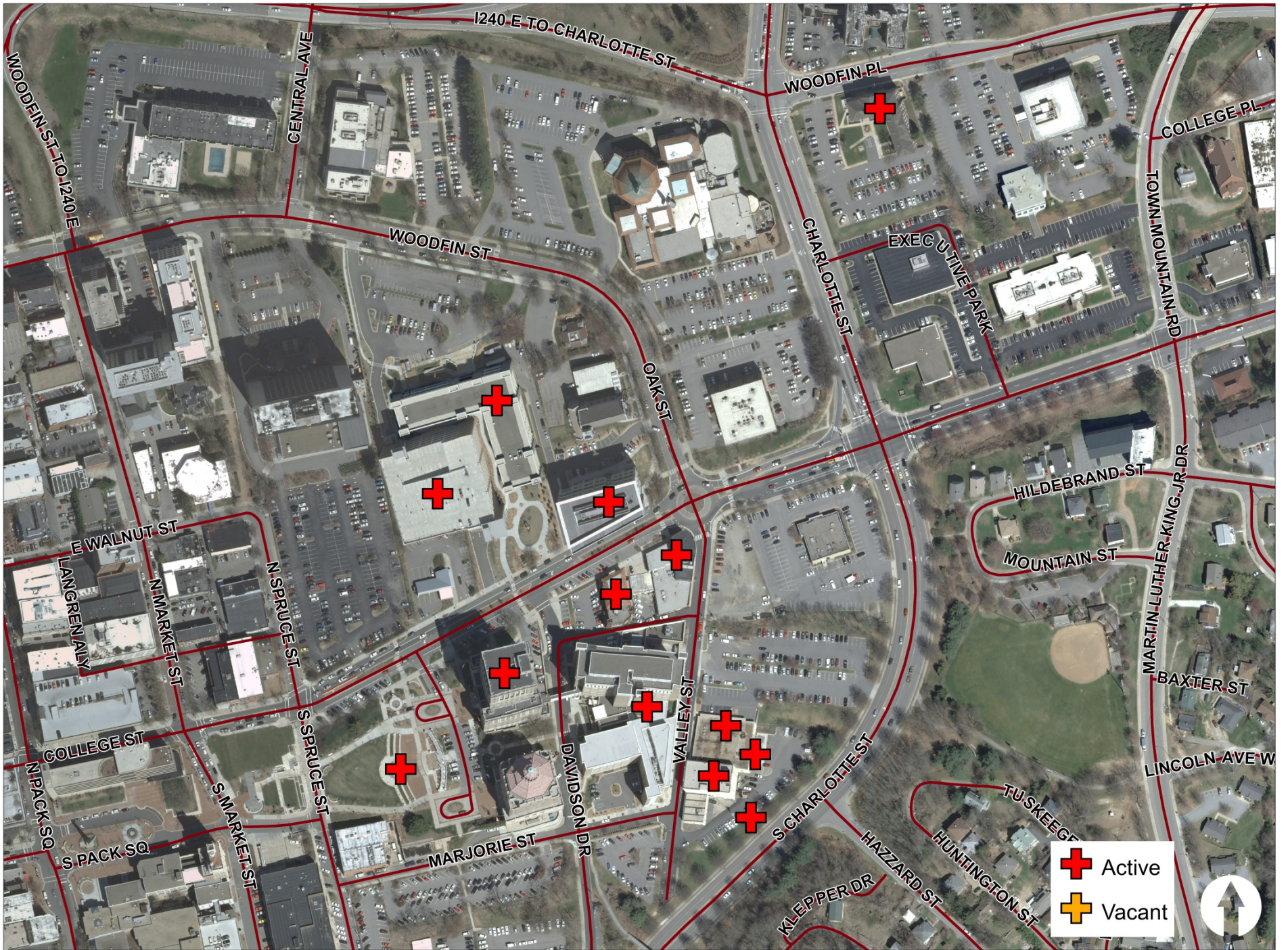
- +
- +
- Two Mile Buffer of the Courthouse

106 facilities & 59 vacant
1,535.9 acres
1,868,326 square feet



Active
Vacant





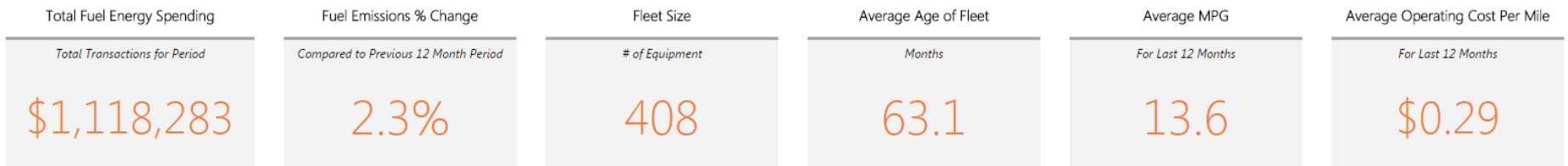
Fleet Overview

HOW ARE WE PERFORMING?

DRAFT - UNDER DEVELOPMENT

FILTER BY COMPANY

- AB Tech
- Active
- Credit Card
- Mt. Mobility
- Of Road
- Retired



Note: The above metrics are filtered for the last 12 months from today.

Top 5 Departments (Accounting Code) by Fuel Use

Last 12 Months	
Department	Cost
1 SHERIFF	\$709,268.48
2 EMS	\$181,206.91
3 PERMIT	\$35,810.89
4 HEALTH	\$18,616.32
5 PLANNING	\$14,783.66

[View Additional Fuel Data >>>](#)

Top 5 Vehicle Categories by Count

Last 12 Months	
Category	Count
1 TRUCK/SUV	215
2 AUTO	158
3 VAN	20
4 AMBULANCE	14
5 SHUTTLE	1

[View Additional Vehicle Data >>>](#)

Top 5 Vehicles by Operating Cost Per Mile

All Time for Active Vehicles	
Vehicle	Cost per Mile
1 2006 CHEVROLET SILVERADO	\$2.09
2 2001 MACK RD688	\$1.66
3 2005 CHEVROLET SUBURBAN	\$1.10
4 2004 FORD F450	\$1.04
5 2003 FORD E350 VAN	\$1.03

[View Additional Cost Per Mile Data >>>](#)