

DEPARTMENT
& CULTURE

FY2016 COMMISSIONER'S CAPITAL PLANNING RETREAT

LRCD Capital Requests for FY2016

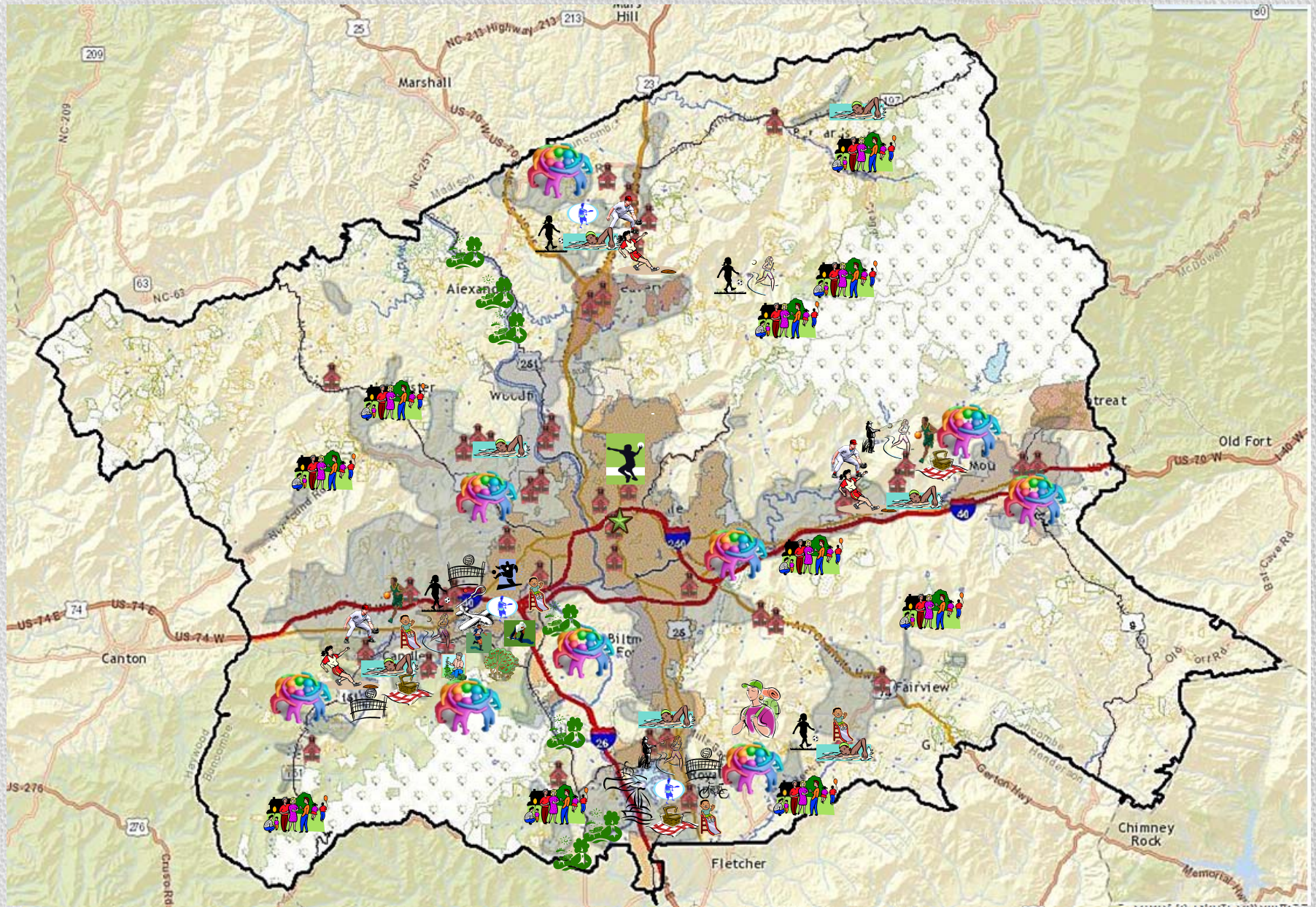


- Lake Julian Park improvements
- Greenways (planning, development & implementation)
- New community park
- Aquatic center

LRCDD Parks and Facilities

The map displays the LRCDD service area, which includes parts of Lenoir, Swain, and Wayne counties. Key locations and roads shown are:

- Towns and Locations:** Marshall, Hill, Alexander, Woodfin, Canton, Fletcher, Fairview, Chimney Rock, Old Fort, and Gertton Hwy.
- Roads:** NC-209, NC-63, US-70, US-74, US-276, and various local roads like McDowell Rd, Old Fort Rd, and Gertton Hwy.
- Facilities and Activities:** The map is populated with numerous colorful icons representing various recreational and community facilities, including swimming pools, sports fields, group gathering areas, and specialized recreational equipment.



The Impact of Promoting Play and Recreation

- Eight Ways
Parks
Improve
Your Health



The Impact of Promoting Play and Recreation

- Health
- Cognitive development
- Sensory learning
- Social benefits
- Appreciation of nature
- Economic development



Public Survey Results and Analysis



- Methods used in the needs assessment:
 - Focus groups with different segments of the community
 - Questionnaire development
 - Aggregate analysis of the adult data
 - Data interpretation
 - Data-based recommendations

Public Survey Results and Analysis



- Attendance (facilities & programs)
- Reasons for non-attendance
- Best times for attendance
- Recreation preferences
- Communication
- Opinions
- Financial options
- Top needs

Lake Julian Park



- Completion of the connector greenway trail to the new park extension
- Back park improvements
- Disc golf course expansion
- Lake Julian Park extension amenity additions
- Renovated playground area

Lake Julian Park



Lake Julian Park



Lake Julian Park



Lake Julian Park



- Completion of the connector greenway trail to the new park extension
- Back park improvements
- Disc golf course expansion
- Lake Julian Park extension amenity additions
- Renovated playground area

Greenways

- Greenways impact the economy, health, recreation, safety, and environment
- Impact to local economies is immense and a good investment
- Numerous steps and years required for greenway planning, design and implementation
- Ensuring connectivity and continuity of greenway system important
- Requesting \$500k to support greenway planning & development and riverfront access & development

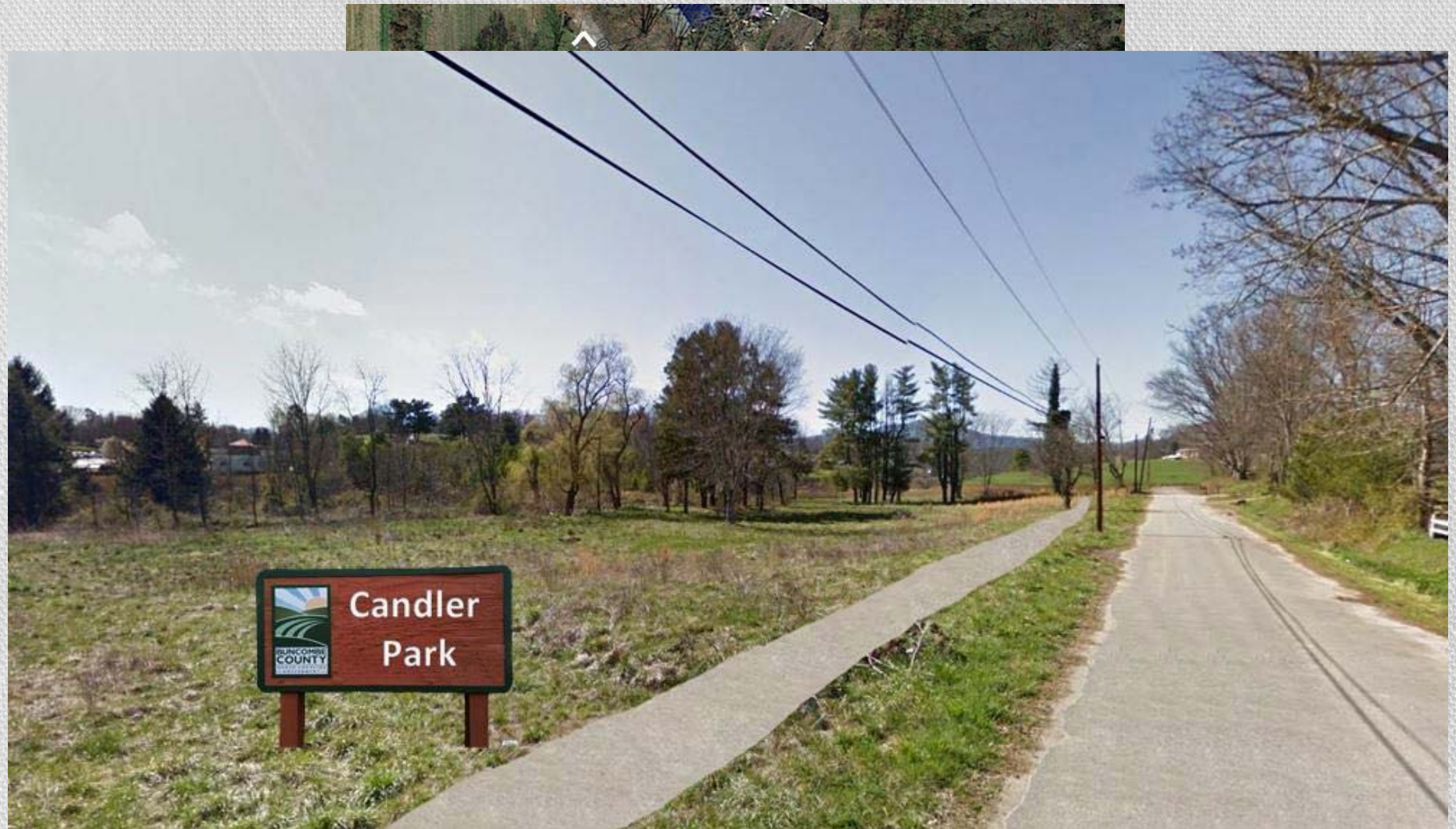


New Community Park



- The # of parks/playgrounds in a community raises fitness levels
- The closer parks/rec sites are to where people live, the more they are used
- County owns approx. 3 acres on Orchard Street in Candler
- Majority of property is in the floodway
- Proposing \$230,000 for design & construction of park

New Community Park



Pools



- Address the immediate pressing need
- Plan for the future

What would it take to get YOU into an indoor pool?

"Hours of operation"

"Depends on who is

"lap swimming opportunities"

"Free"

"Kayaking classes"

"Not place it in South Asheville"

"Location (close to where I live)"

"Nothing"

"Programs/classes that interest me"

"The ability to swim during winter months"

"No monthly

"CONVENIENT HOURS"

"Close to my home in Fairview. Why does everything need to be in South Asheville?"

"Loose weight first"
fee"

"Close to my home (east Buncombe)"

"Clean pool"

"Open swim in evenings"

"Exercise programs"

"Low cost"

"Location"

"Scuba class"

"Water park combo like Waynesville that allows multiple users"

"LESSONS"

"Variety (of other recreational opportunities)"

"No exposure to sun"

"Year round access"

What would it take to get YOU into an indoor pool?

"Depends on who is

"Hours of operation"

- Location

"lap swimming opportunities"

"Kayaking classes"

- Cost

"Location (close to where

- Variety of

"The ability to swim during winter m

"No monthly programming & activities"

"CONVENIENT HOU

"Low monthly fee"

"Close to my home (ea

- Hours of operation

"Open swim in

"Low cost"

- Operation and

"Winter park combo like

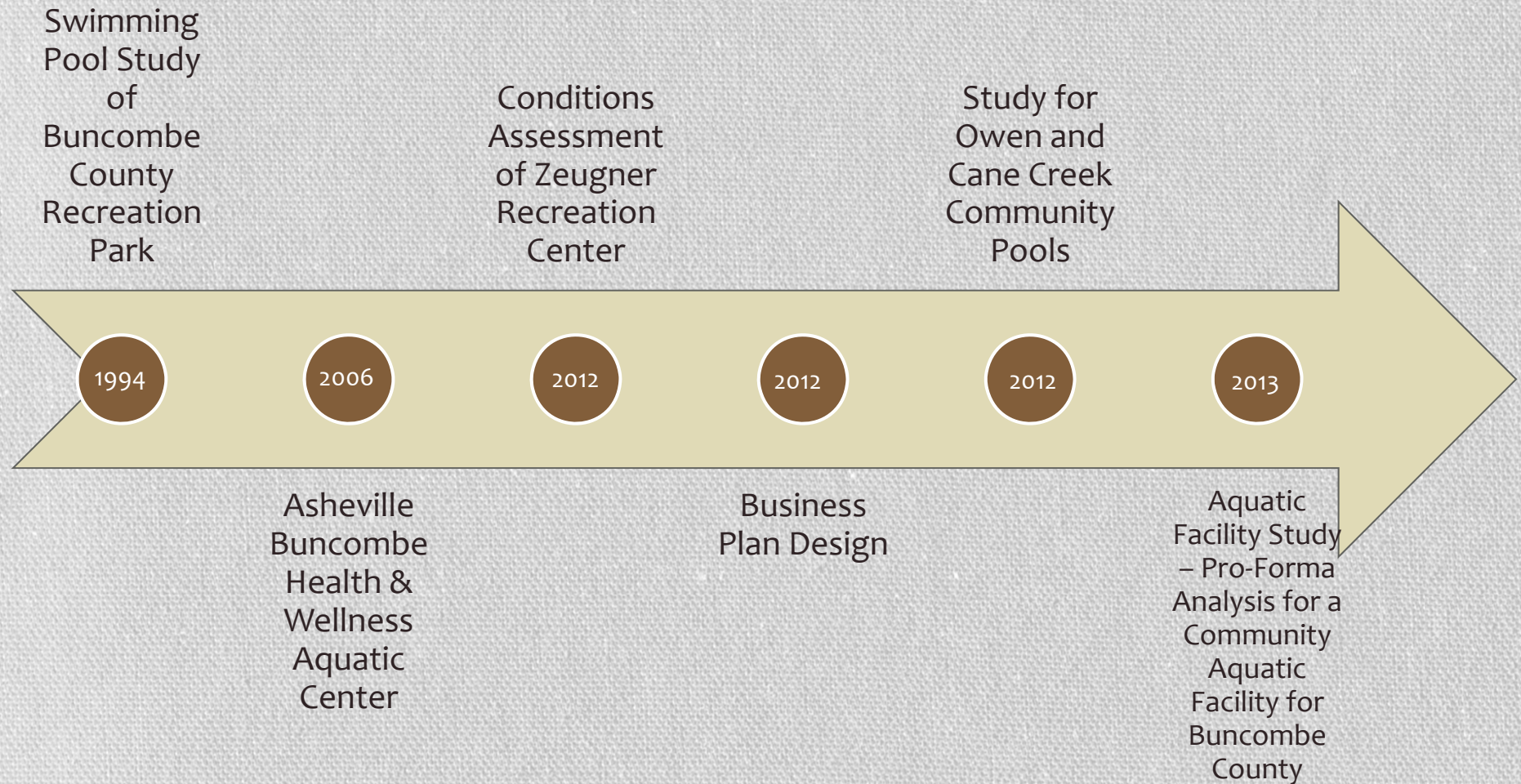
"Louisville that allows multiple users"

"LESSONS"

"Variety (of other recreational opportunities)"



Pools



Pools



Pools

		Option 3
Project Cost		\$7,606,991.25
Expense		\$542,418.00
Typical Recapture Rate		60%
Revenue		\$325,450.80
Operating Cashflow		(\$216,967.20)
Capital Replacement Fund		\$27,100.00
Debt Service		(\$570,524.34)
Cashflow		(\$814,591.54)
Source: Counsilman-Hunsaker w		



LRCD Facilities & Parks and Year Constructed

Lake Julian Park Extension	2014
Collier Cove Nature Preserve	2014
Buncombe Sports Park Orchard	2012
Lake Julian Park Disc Golf	2012
Buncombe Sports Park Garden	2011
Hominy Valley Playground	2008
Cane Creek Playground	2007
Buncombe Sports Park Bocce Ball	2007
North Asheville Library	2005
Buncombe Sports Park Playground	2001
Leicester Library	2001
Owen Community Pool	2000
Buncombe Sports Park Soccer Fields	2000
Fairview Library	1999
Hominy Valley Pool	1998
Buncombe Sports Park	1998
Ledges Whitewater River Park	1998
West Asheville Library	1997
Karpen Soccer Fields	1997
Enka Library	1997
North Buncombe Pool	1996
Lake Julian Park Playground	1996
Cane Creek Swimming Pool	1991
Lake Julian Back Park	1990
Walnut Island River Park	1990
South Buncombe Skyland Library	1986
Erwin Community Pool	1985
Hominy Valley Park	1981
Hominy Creek River Park	1980
Pack Memorial Library	1978
Glen Bridge River Park	1978
Owen Park	1975
North Buncombe Park	1974
Corcoran Paige River Park	1974
Lake Julian Park	1973
Bent Creek River Park	1973
South Asheville Oakley Library	1970
Black Mountain Library	1968
East Asheville Library	1965
Zeugner Recreation Center	1960's
Swannanoa Library	1952
Weaverville Library	1925



Pools



Pools





BUNCOMBE COUNTY LIBRARY, RECREATION & CULTURE DEPARTMENT

Looking ahead to FY2016...

Lake Julian Park Improvements:
\$125,000 (50% match for PARTF Grant) for
Lake Julian playground

Greenways: \$500,000 to support
greenway planning, development and
implementation

New Community Park: \$230,000 to
design & construct new community based
park

Aquatic Facilities: Requesting
direction

