

John Kilby

Map 1: Topography

Requested Zoning:

- Commercial Service CS

Current Zoning:

- Residential District R-3

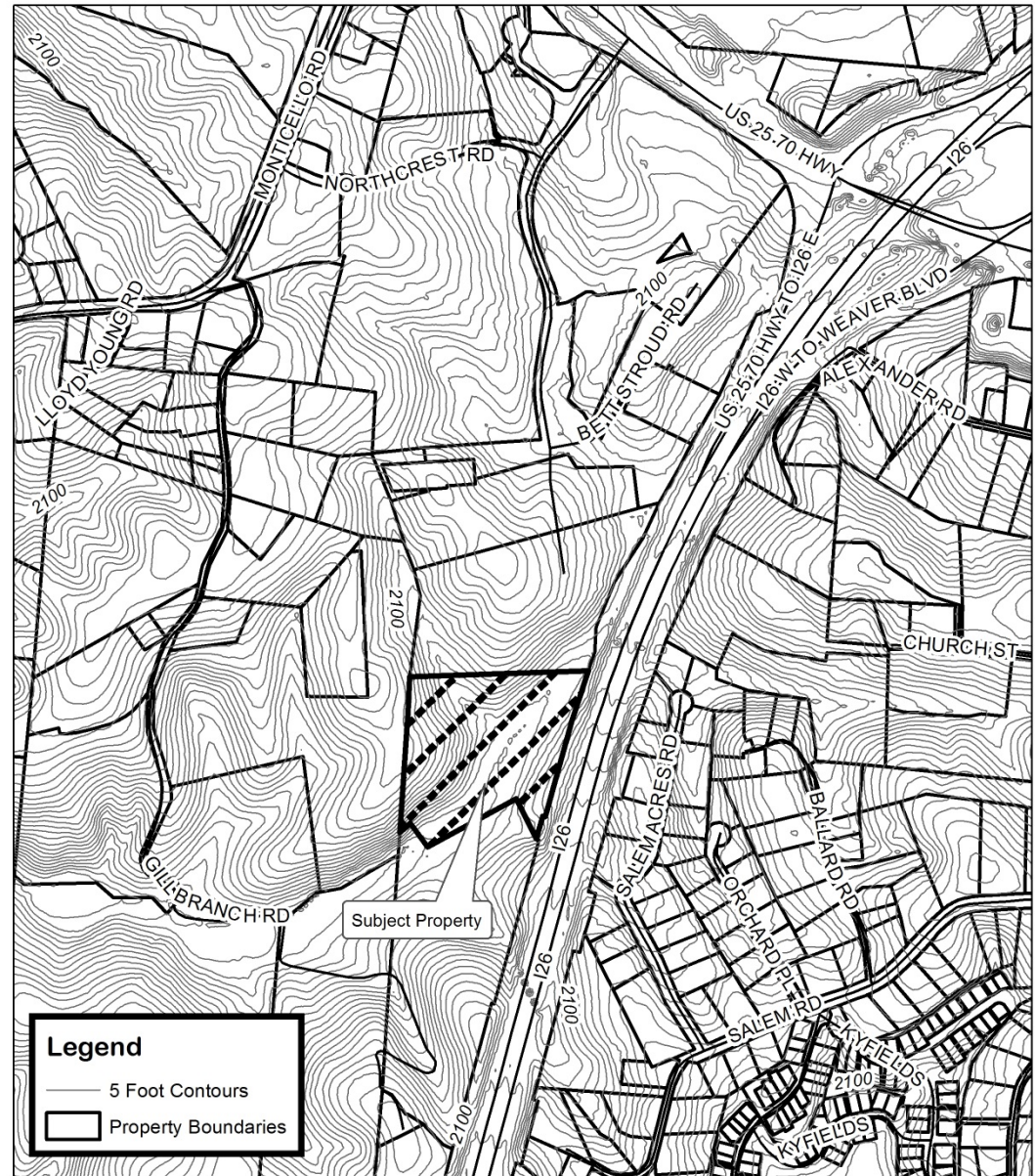
Staff Recommendation:

- Approval

Planning Board

Recommendation:

- Approval



John Kilby

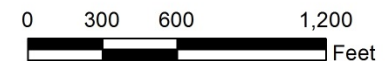
Map Amendment

Case Number: ZPH2014-00068

Approximate Property Size: 9.39 acres

Application Date: November 7, 2014

Planning Board Hearing Date: December 15, 2014



Created By: Buncombe County Planning
Date: November 17, 2014

John Kilby

Map 2: Aerial Photo

Requested Zoning:

- Commercial Service CS

Current Zoning:

- Residential District R-3

Staff Recommendation:

- Approval

Planning Board

Recommendation:

- Approval



John Kilby

Map Amendment

Case Number: ZPH2014-00068

Approximate Property Size: 9.39 acres

Application Date: November 7, 2014

Planning Board Hearing Date: December 15, 2014



0 200 400 800
Feet

Created By: Buncombe County Planning
Date: November 17, 2014

John Kilby

Map 3: Land Use Constraints

Requested Zoning:

- Commercial Service CS

Current Zoning:

- Residential District R-3

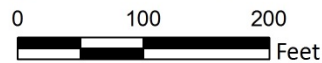
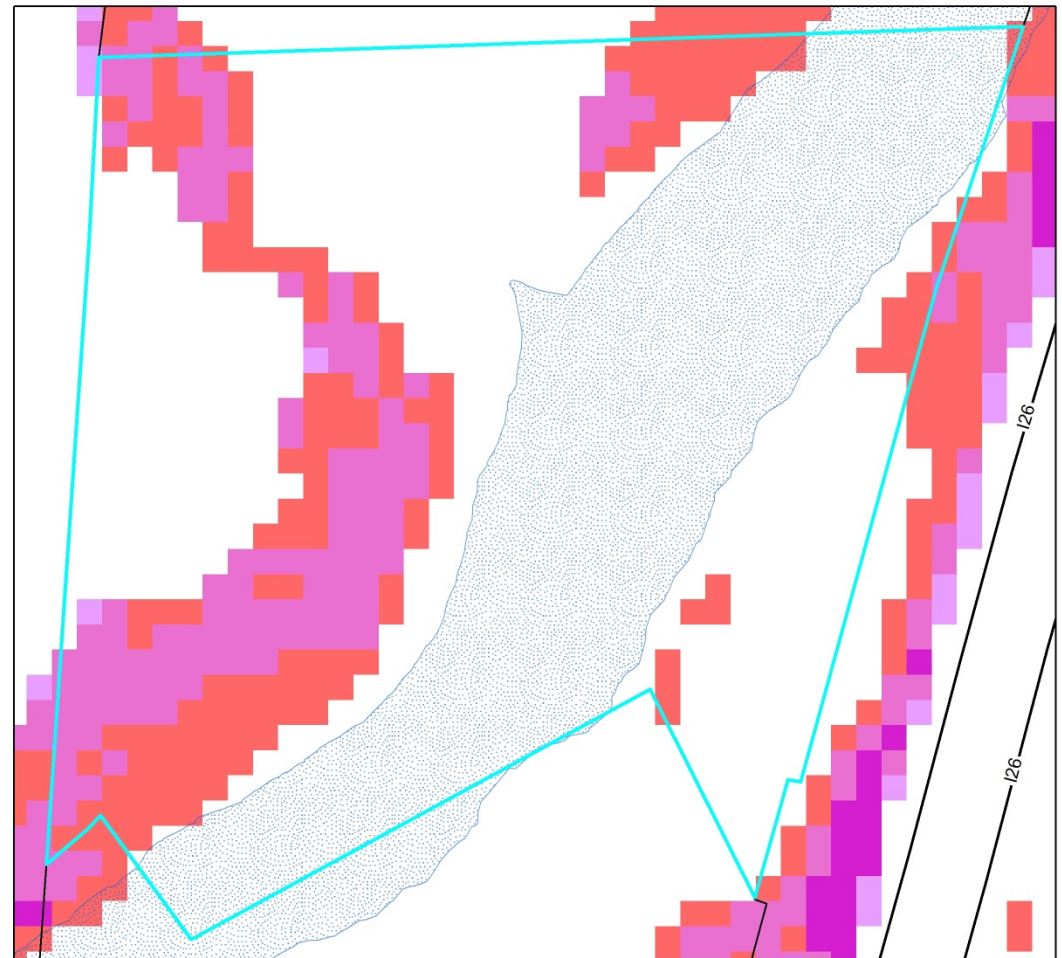
Staff Recommendation:

- Approval

Planning Board Recommendation:

Recommendation:

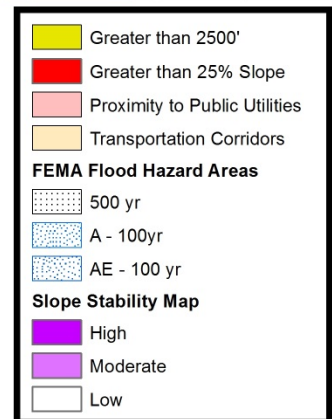
- Approval



John Kilby Map Amendment

Case Number: ZPH2014-00068
Approximate Property Size: 9.39 acres
Application Date: November 7, 2014
Planning Board Hearing Date: December 15, 2014

Created By: Buncombe County Planning
Date: November 17, 2014



John Kilby

Map 4: Zoning

Requested Zoning:

- Commercial Service CS

Current Zoning:

- Residential District R-3

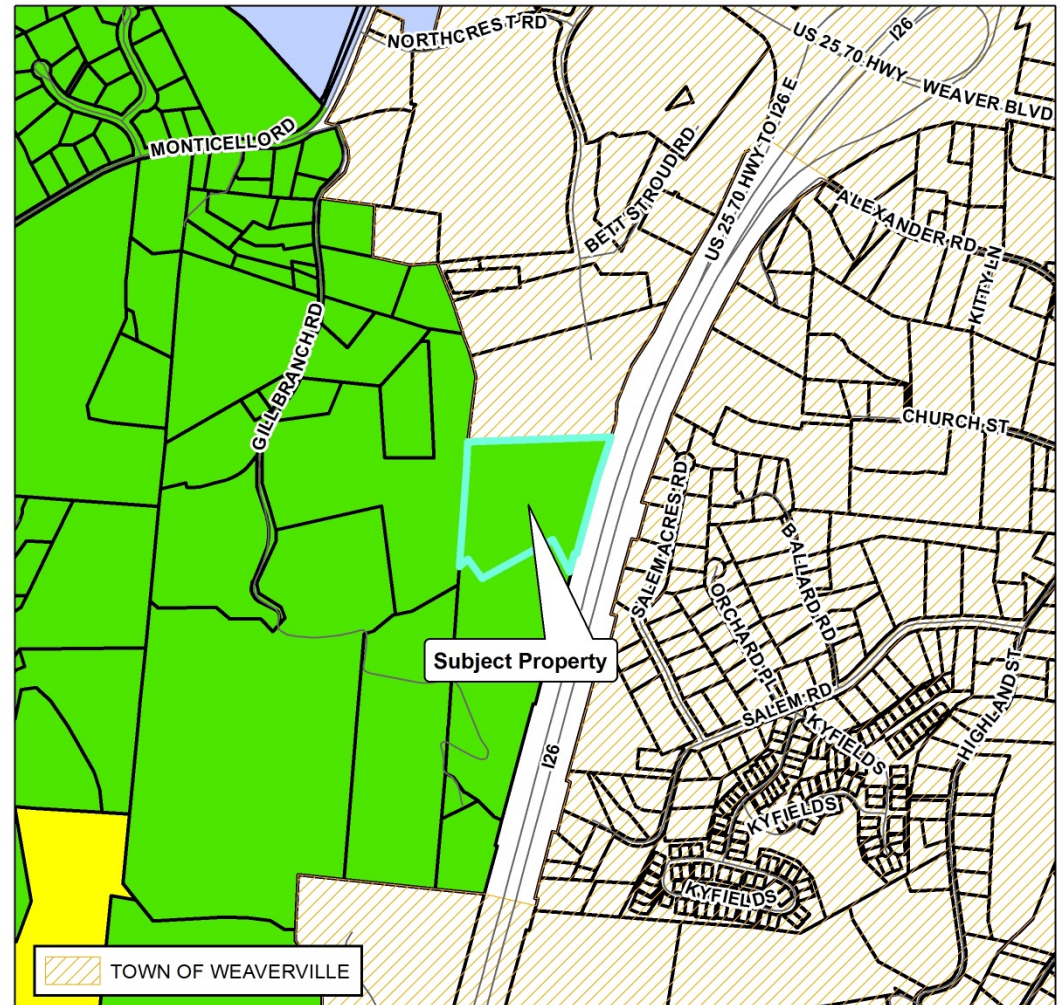
Staff Recommendation:

- Approval

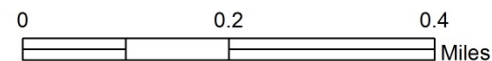
Planning Board

Recommendation:

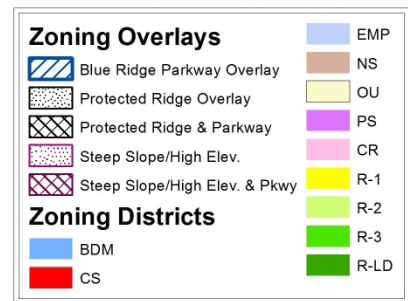
- Approval



John Kilby Map Amendment



Case Number: ZPH2014-00068
 Approximate Property Size: 9.39 acres
 Application Date: November 7, 2014
 Planning Board Hearing Date: December 15, 2014



Created By: Buncombe County Planning
 Date: November 17, 2014