



CONSERVATION EASEMENT  
FUNDING REQUESTS





## Recommended By:

- Land Conservation Advisory Board (LCAB)
- Agricultural Advisory Board

# Funding Requests:

- OM Sanctuary: 41.51 acres, \$27,500
- Earlys View: 110.87 acres, \$30,900
- Nesbitt: 86.22 acres, \$35,000
- Morris: 48.76 acres, \$25,000



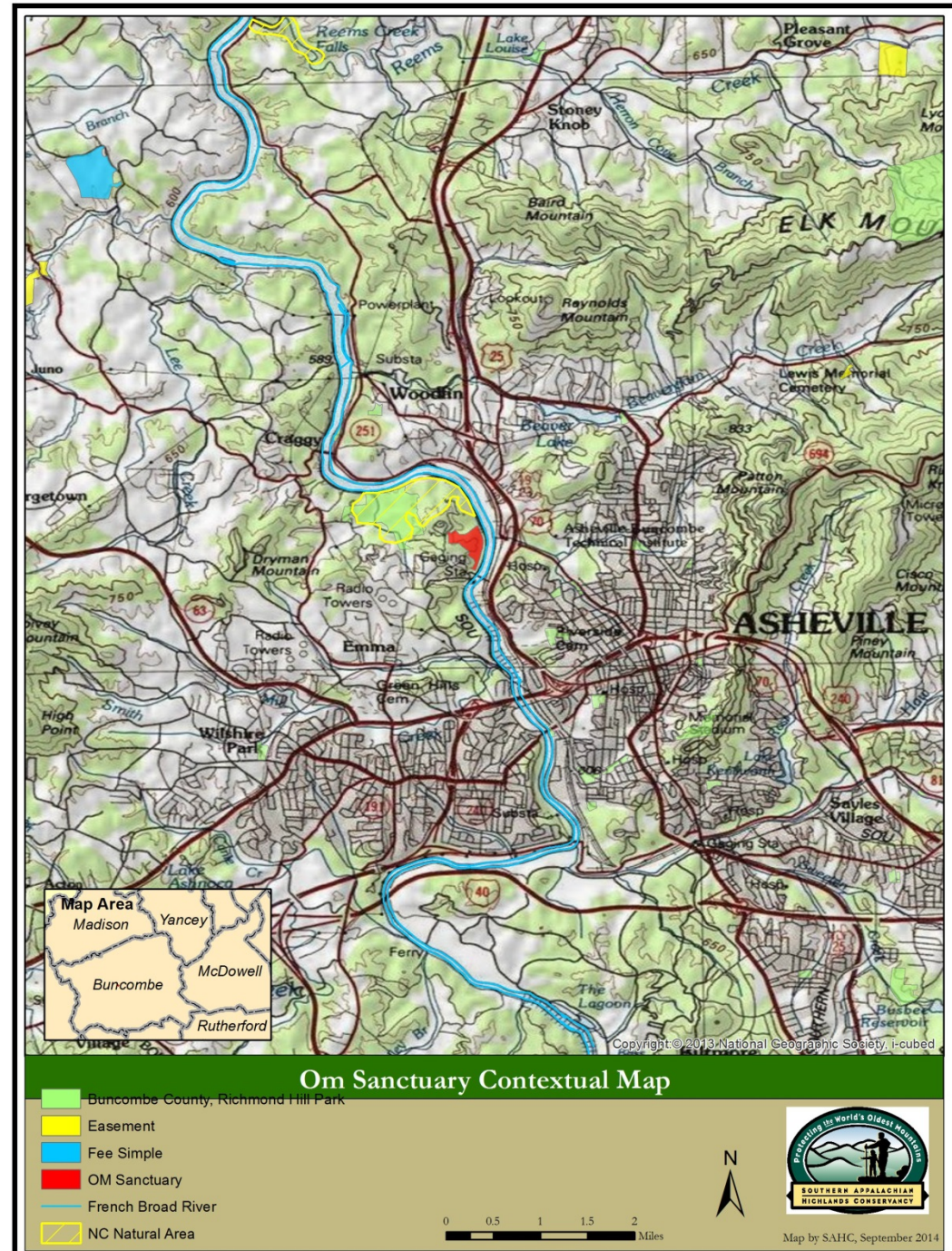
# OM Sanctuary

- 41.51 acres, at Richmond Hill in Woodfin
- Requesting \$27,500
- Estimated easement value \$776,000
- Landowners willing to donate 49% of value
- In conservation priority area
- Recommended by LCAB

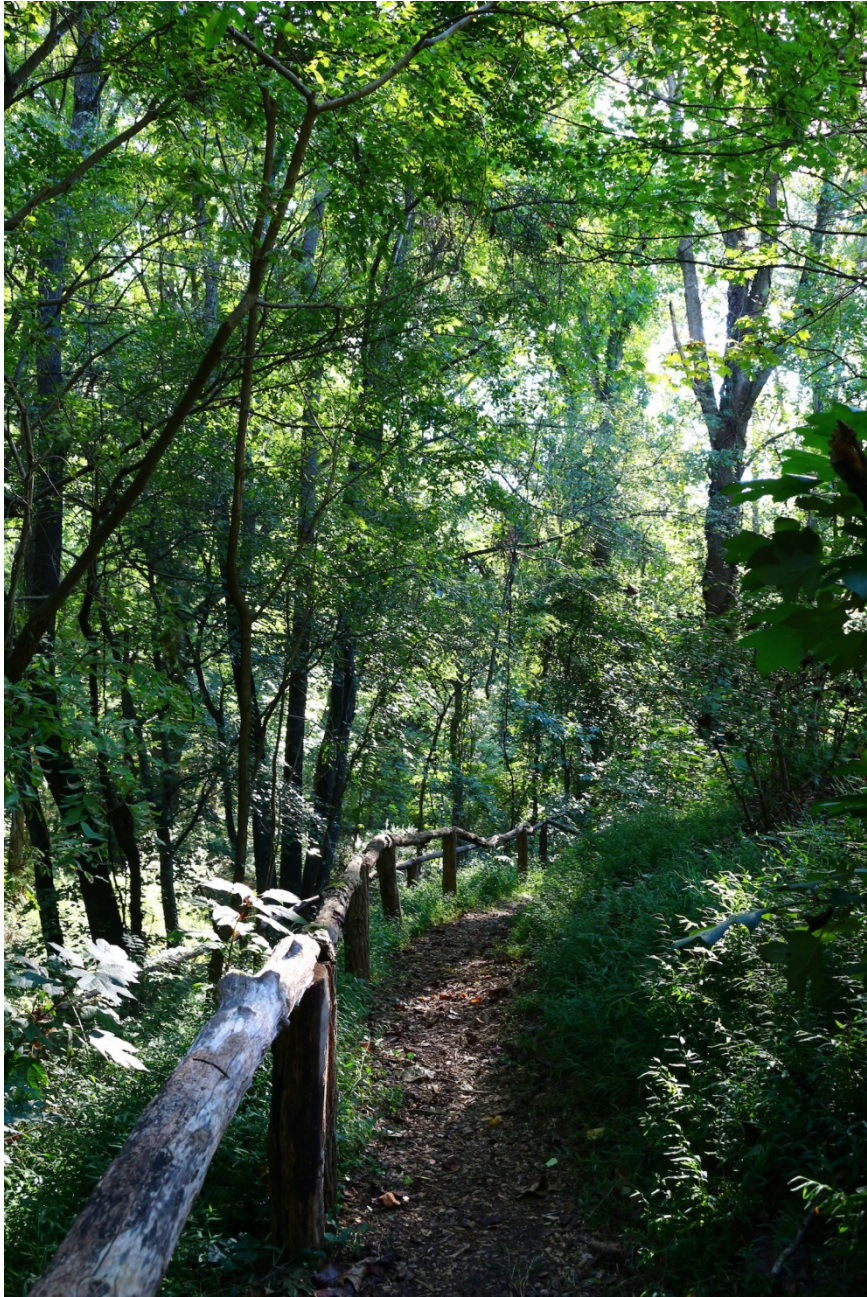


# OM Sanctuary

- 41.51 acres
- Richmond Hill Area
- Overlooks the French Broad River
- Highly visible
- Rare habitats and floodplain protection













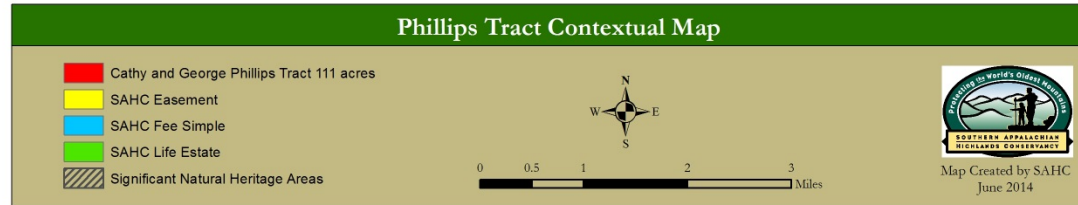
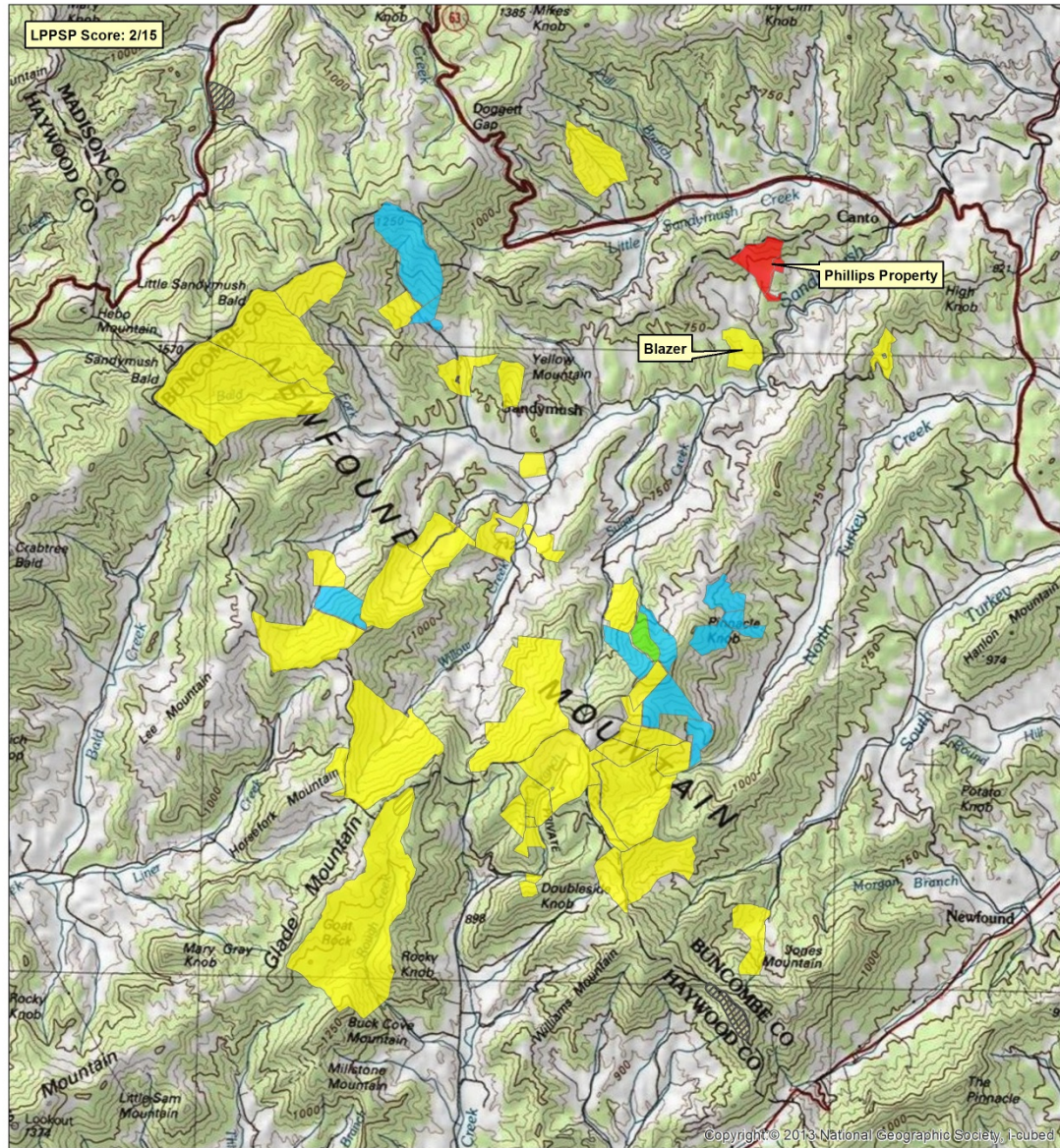
# Earlys View

- 110.87 acres, Sandy Mush
- Requesting \$30,900
- Estimated easement value \$360,000
- Landowners willing to donate 100% of value
- In conservation focus area
- Recommended by LCAB



# Earlys View

- 110.87 acres
- Sandy Mush
- Near Other Conserved Properties
- Highly visible
- Water quality protection
- Prime and important soils



Map Created by SAHC  
June 2014











# Nesbitt

- 86.22 acres, Fairview
- Requesting \$35,000
- Estimated easement value \$750,000
- Landowners willing to donate 30% of value
- In conservation priority area
- Recommended by the Agricultural Advisory Board



# Nesbitt

- 86.22 acres, Fairview, Cane Creek





# Nesbitt

- Prime and important soils
- Dairy & CSA
- Century Farm





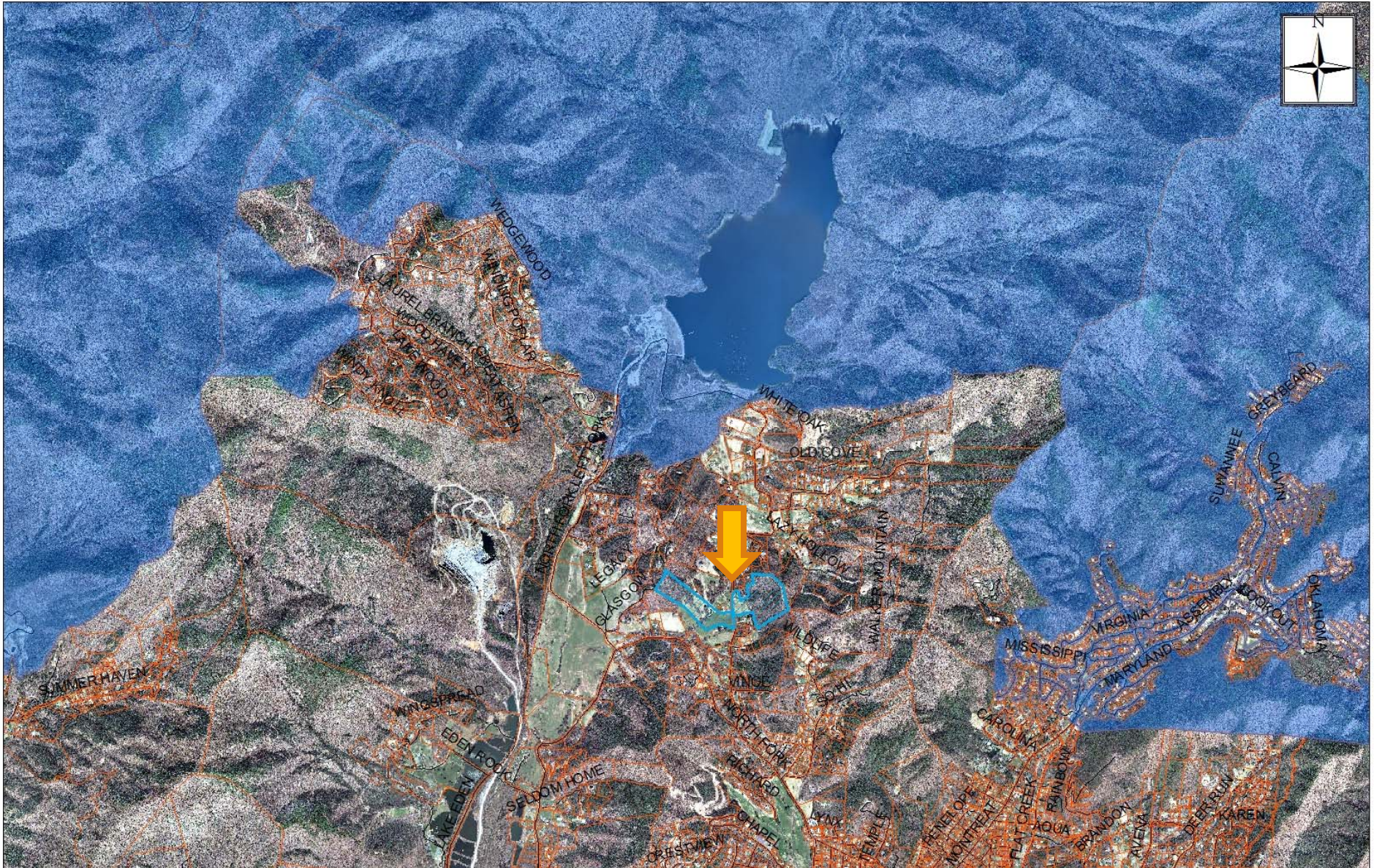
# Morris

- 48.76 acres, Black Mountain
- Requesting \$25,000
- Estimated easement value \$158,000
- Landowners willing to donate 100% of value
- In conservation priority area
- Recommended by the Agricultural Advisory Board
- Close to other protected lands
- Working farm



# Morris

- 48.76 acres, Black Mountain, North Fork Right Fork













## Return on Investment:

- \$118,400 requested
- Protect 287.36 acres
- Leverage \$2,084,000 – grants, private donations, landowner donated value

---

QUESTIONS?