

D. Keith Roberts, Trustee

Map 1: Topography

Requested Zoning:

- Employment District (EMP)

Current Zoning:

- Residential District R-3

Staff Recommendation:

- Approval

Planning Board

Recommendation:

- Approval



D. Keith Roberts, Trustee Map Amendment

Case Number: ZPH2014-00056 & -00058

Approximate Property Size: 31.17 acres

Application Date: September 17 & 19, 2014

Planning Board Hearing Date: October 20, 2014



0 500 1,000 2,000
Feet

Created By: Buncombe County Planning
Date: September 22, 2014

D. Keith Roberts, Trustee

Map 2: Aerial Photo

Requested Zoning:

- Employment District (EMP)

Current Zoning:

- Residential District R-3

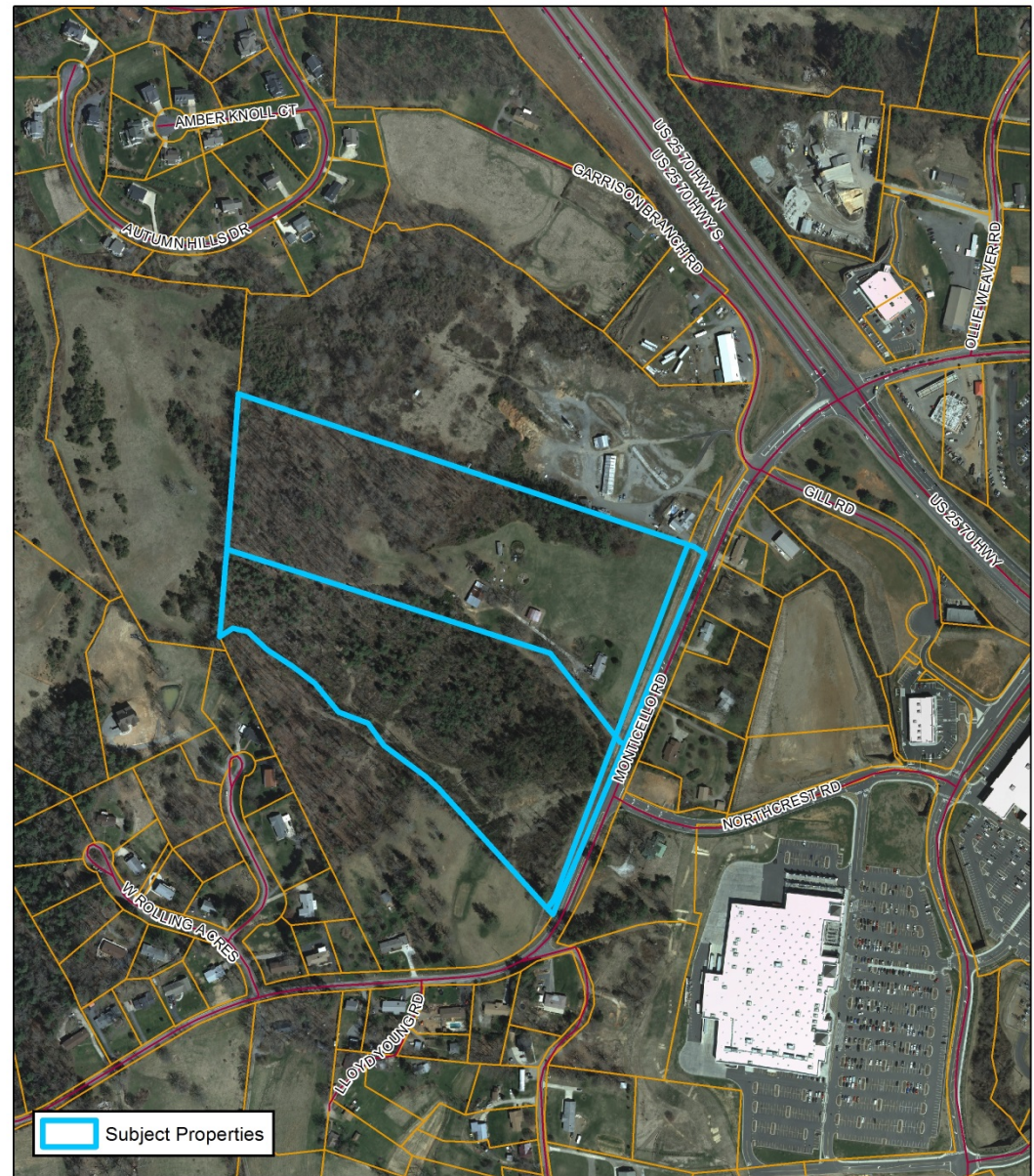
Staff Recommendation:

- Approval

Planning Board

Recommendation:

- Approval



D. Keith Roberts, Trustee Map Amendment

Case Number: ZPH2014-00056 & -00058

Approximate Property Size: 31.17 acres

Application Date: September 17 & 19, 2014

Planning Board Hearing Date: October 20, 2014



0 250 500 1,000
Feet

Created By: Buncombe County Planning
Date: September 23, 2014

D. Keith Roberts, Trustee

Map 3: Land Use Constraints

Requested Zoning:

- Employment District (EMP)

Current Zoning:

- Residential District R-3

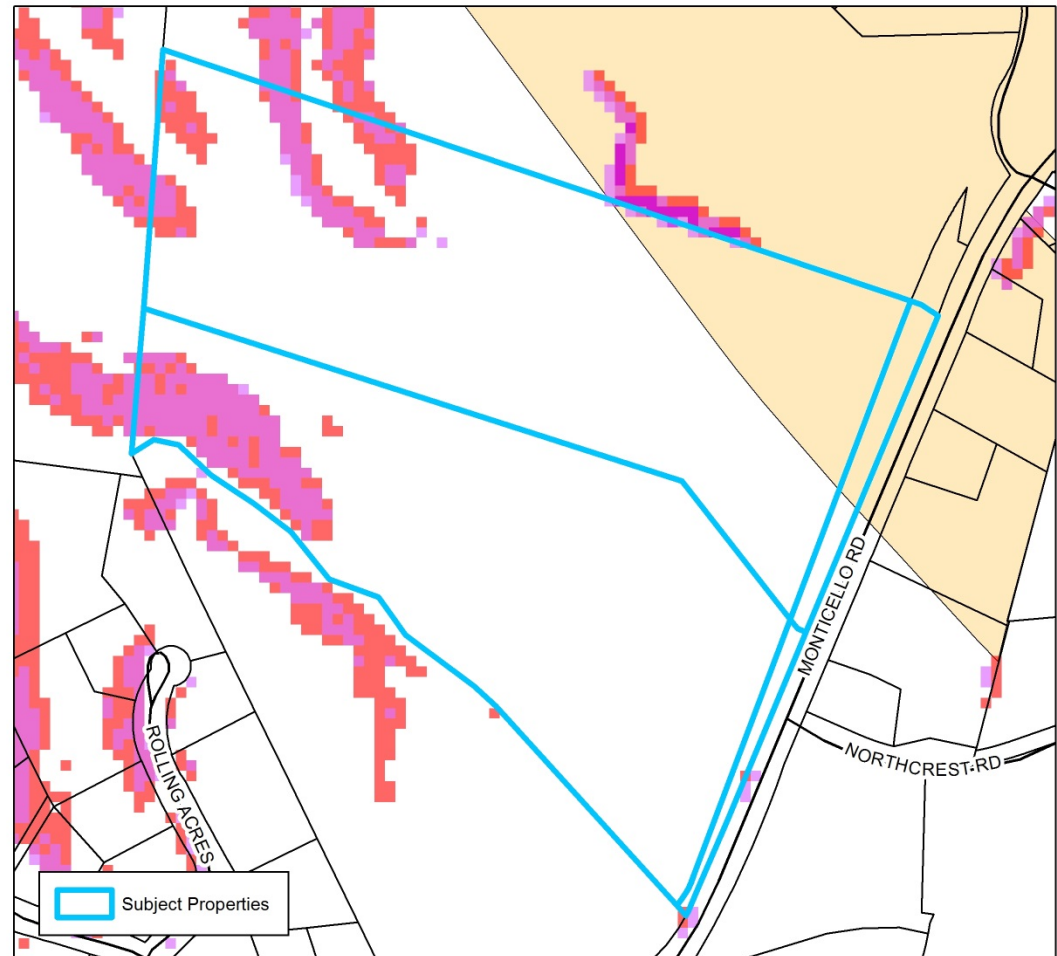
Staff Recommendation:

- Approval

Planning Board

Recommendation:

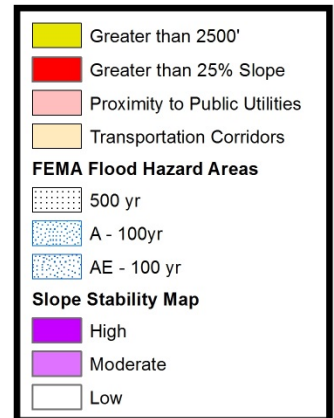
- Approval



D. Keith Roberts, Trustee Map Amendment

Case Number: ZPH2014-00056 & -00058
 Approximate Property Size: 31.17 acres
 Application Date: September 17 & 19, 2014
 Planning Board Hearing Date: October 20, 2014

Created By: Buncombe County Planning
 Date: September 22, 2014



D. Keith Roberts, Trustee

Map 4: Zoning

Requested Zoning:

- Employment District (EMP)

Current Zoning:

- Residential District R-3

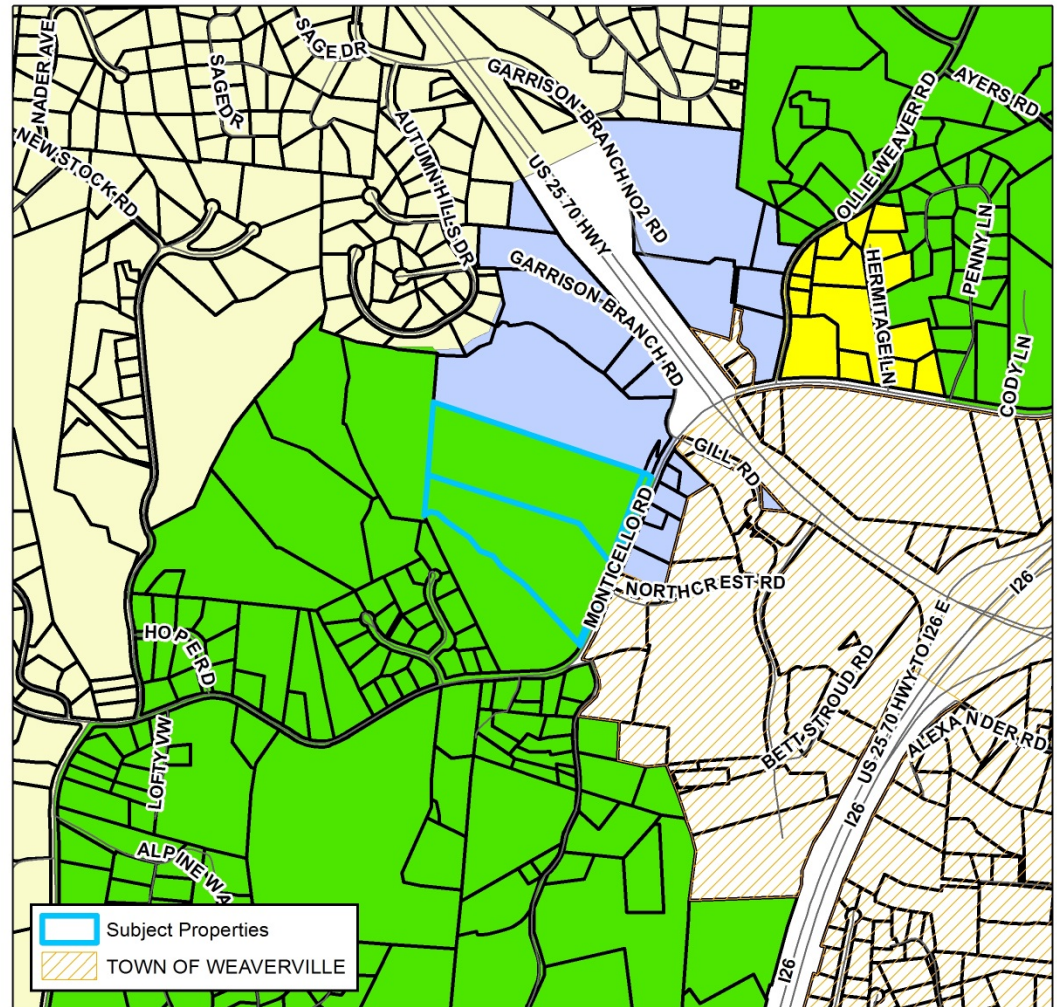
Staff Recommendation:

- Approval

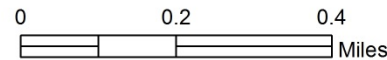
Planning Board

Recommendation:

- Approval



D. Keith Roberts, Trustee Map Amendment



Zoning Districts		Zoning Overlays	
BDM	PS	Blue Ridge Parkway Overlay	
CS	CR	Protected Ridge Overlay	
EMP	R-1	Protected Ridge & Parkway	
NS	R-2	Steep Slope/High Elev.	
OU	R-3	Steep Slope/High Elev. & Pkwy	
	R-LD		

Case Number: ZPH2014-00056 & -00058
 Approximate Property Size: 31.17 acres
 Application Date: September 17 & 19, 2014
 Planning Board Hearing Date: October 20, 2014



Created By: Buncombe County Planning
 Date: September 22, 2014