

## LEGEND

EXISTING STORM PER SURVEY

APPROXIMATE LOCATION OF  
EXISTING STORM

## STORM REROUTE OPTION

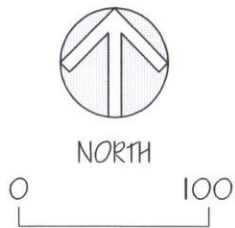
EXISTING STORM TO REMOVE/  
ABANDONED

# CITY CENTRE/HGI STORM REROUTE BULLETIN

## BYPASS OPTION - AUGUST 2014

REVISED





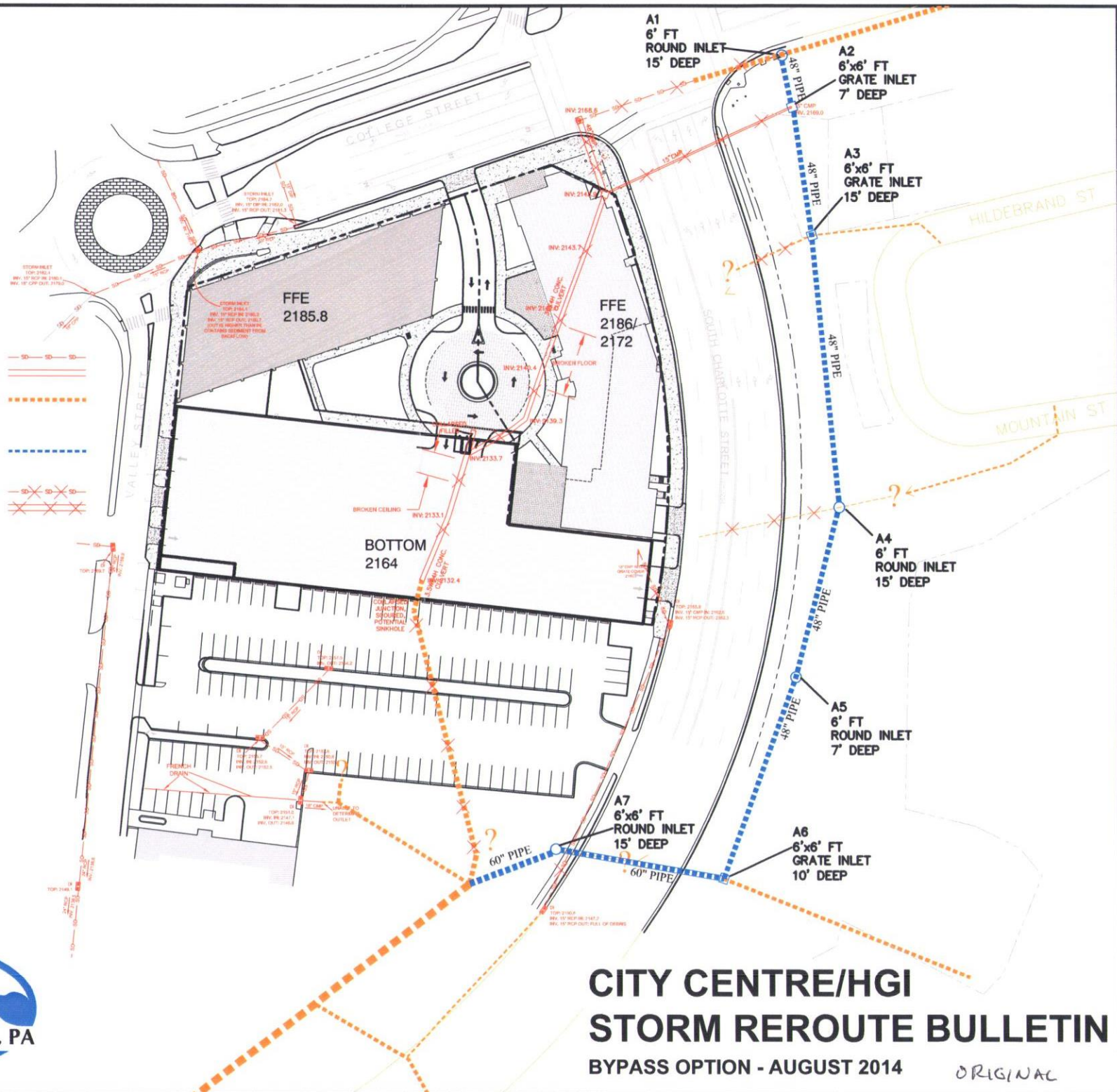
## LEGEND

EXISTING STORM PER SURVEY

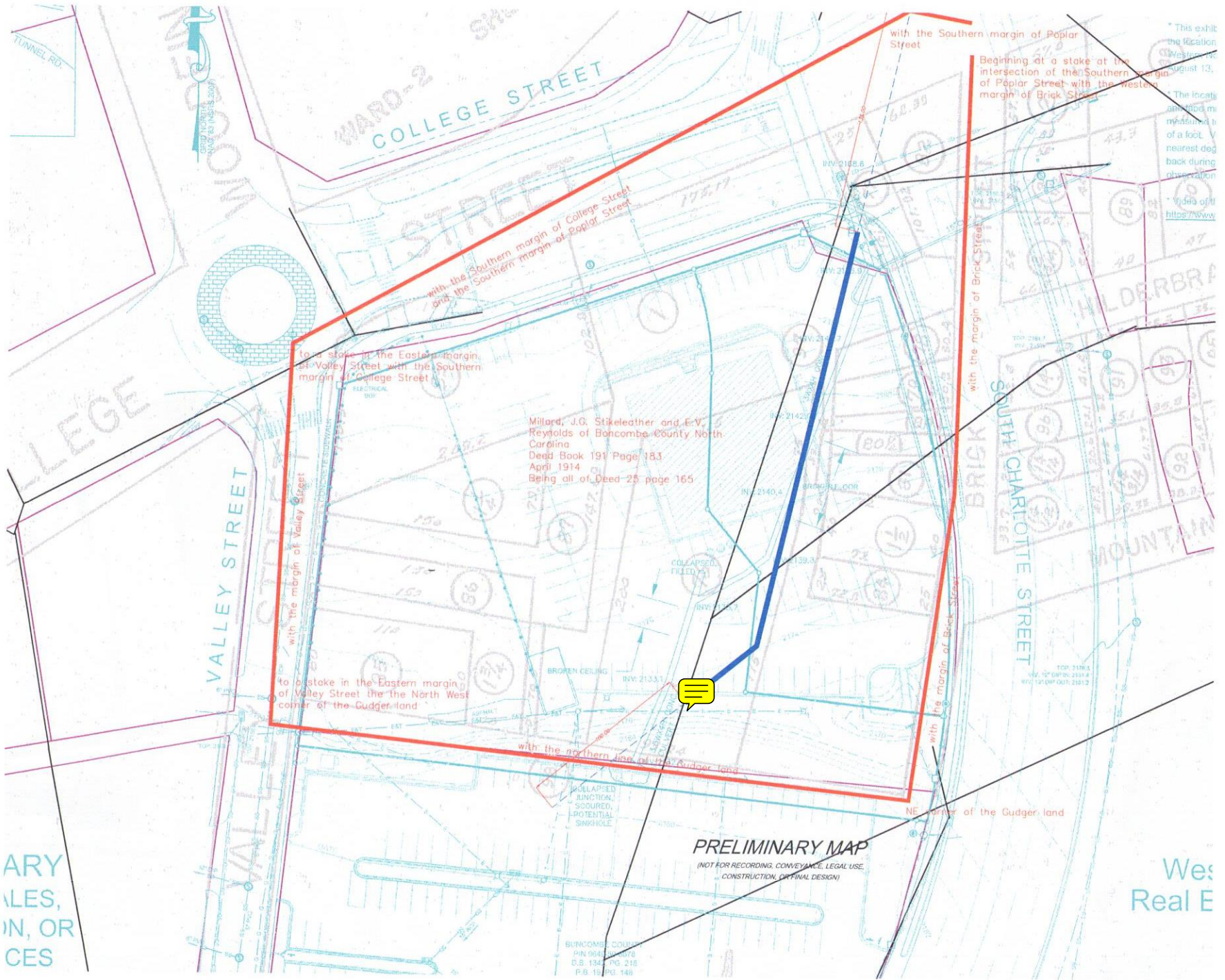
APPROXIMATE LOCATION OF  
EXISTING STORM

STORM REROUTE OPTION

EXISTING STORM TO REMOVE/  
ABANDONED







\* This exhibit the location of the Western margin of the proposed development area. The location of the proposed development area is maintained to a foot. The nearest dog back during observation.

\* Video of the location of the proposed development area is available at: <https://www.youtube.com/watch?v=...>

**PRELIMINARY MAP**  
(NOT FOR RECORDING, CONVEYANCE, LEGAL USE, CONSTRUCTION, OFFICIAL DESIGN)

BUNCOMBE COUNTY  
PLAT 0065, 0066, 0067  
D.S. 134 PG. 218  
P.B. 15 PG. 148

ARY  
LES,  
IN, OR  
CES

Wes  
Real E