

Jack Ohlhaber

Map 1: Topography

Requested Zoning:

- Commercial Service District (CS)

Current Zoning:

- Single-Family Residential District R-1

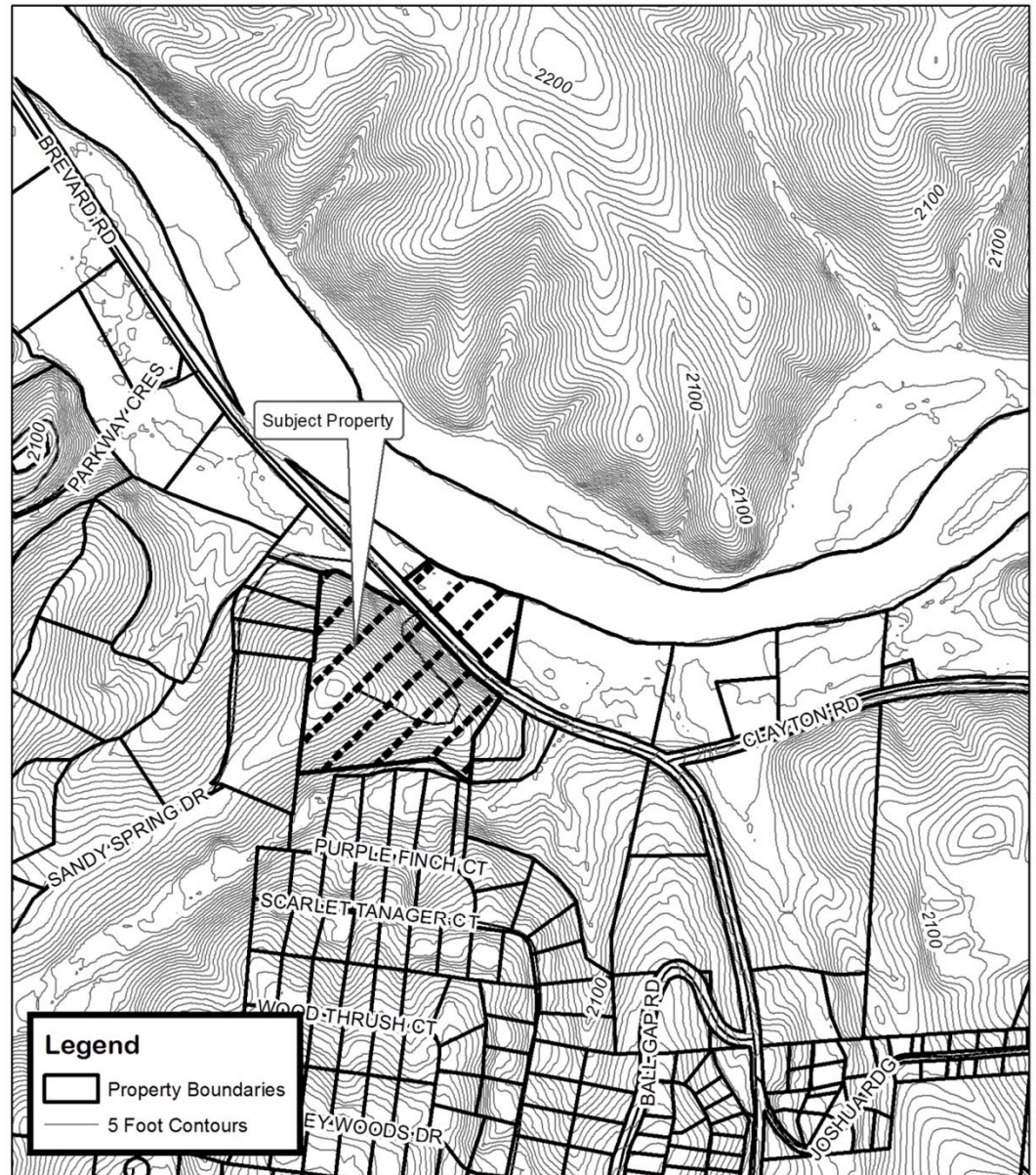
Staff Recommendation:

- Denial

Planning Board

Recommendation:

- Denial



Jack Ohlhaber

Map Amendment

Case Number: ZPH2014-00027

Approximate Property Size: 14.86 acres

Application Date: April 11, 2014

Planning Board Hearing Date: May 19, 2014



Created By: Buncombe County Planning
Date: April 14, 2014

Jack Ohlhaber

Map 2: Aerial Photo

Requested Zoning:

- Commercial Service District (CS)

Current Zoning:

- Single-Family Residential District R-1

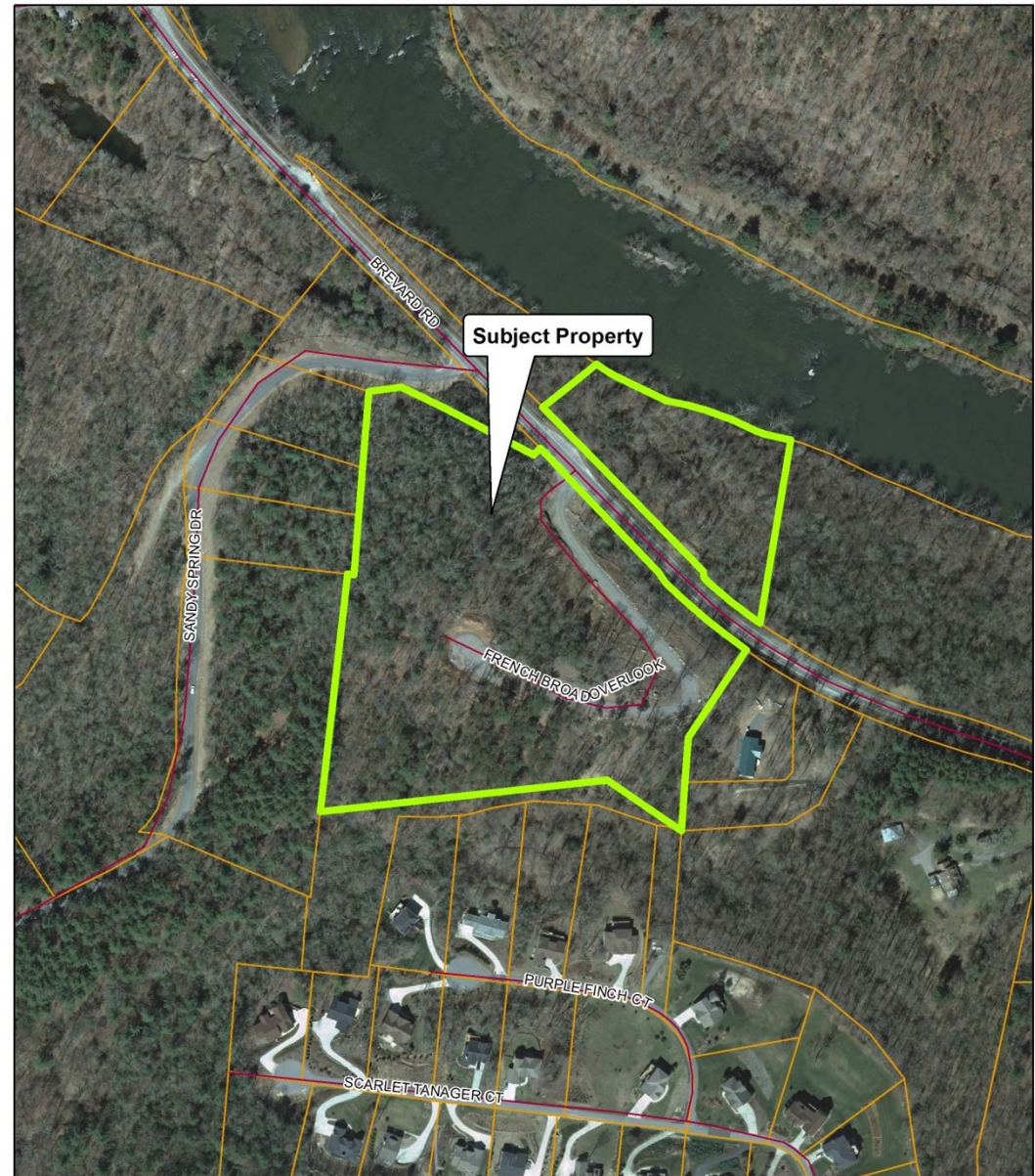
Staff Recommendation:

- Denial

Planning Board

Recommendation:

- Denial



Jack Ohlhaber Map Amendment

Case Number: ZPH2014-00027
Approximate Property Size: 14.86 acres
Application Date: April 11, 2014
Planning Board Hearing Date: May 19, 2014



0 100 200 400
Feet

Created By: Buncombe County Planning
Date: April 14, 2014

Jack Ohlhaber

Map 3: Land Use Constraints

Requested Zoning:

- Commercial Service District (CS)

Current Zoning:

- Single-Family Residential District R-1

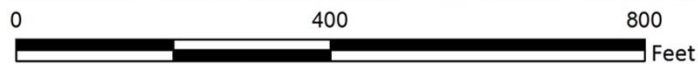
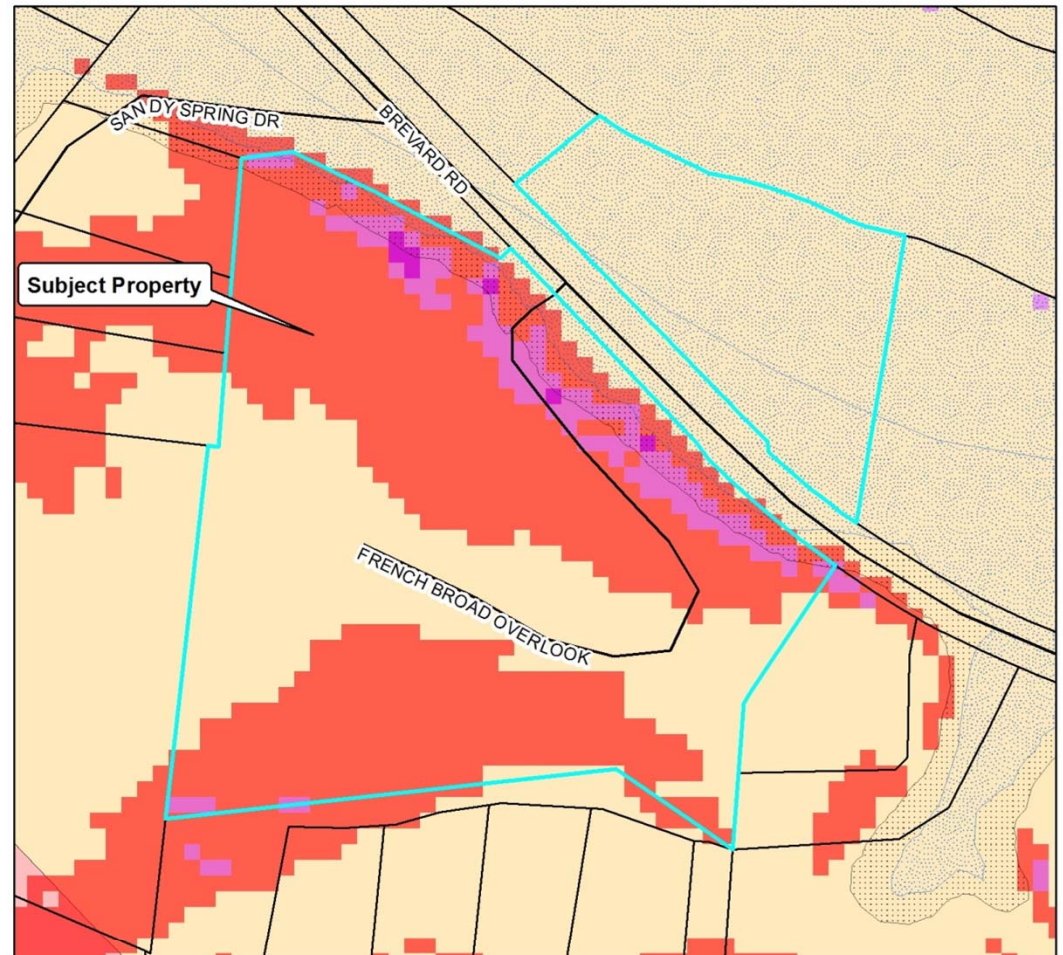
Staff Recommendation:

- Denial

Planning Board

Recommendation:

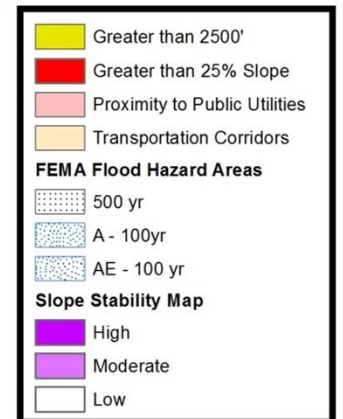
- Denial



Jack Ohlhaber Map Amendment

Case Number: ZPH2014-00027
Approximate Property Size: 14.86 acres
Application Date: April 11, 2014
Planning Board Hearing Date: May 19, 2014

Created By: Buncombe County Planning
Date: April 14, 2014



Jack Ohlhaber

Map 4: Zoning

Requested Zoning:

- Commercial Service District (CS)

Current Zoning:

- Single-Family Residential District R-1

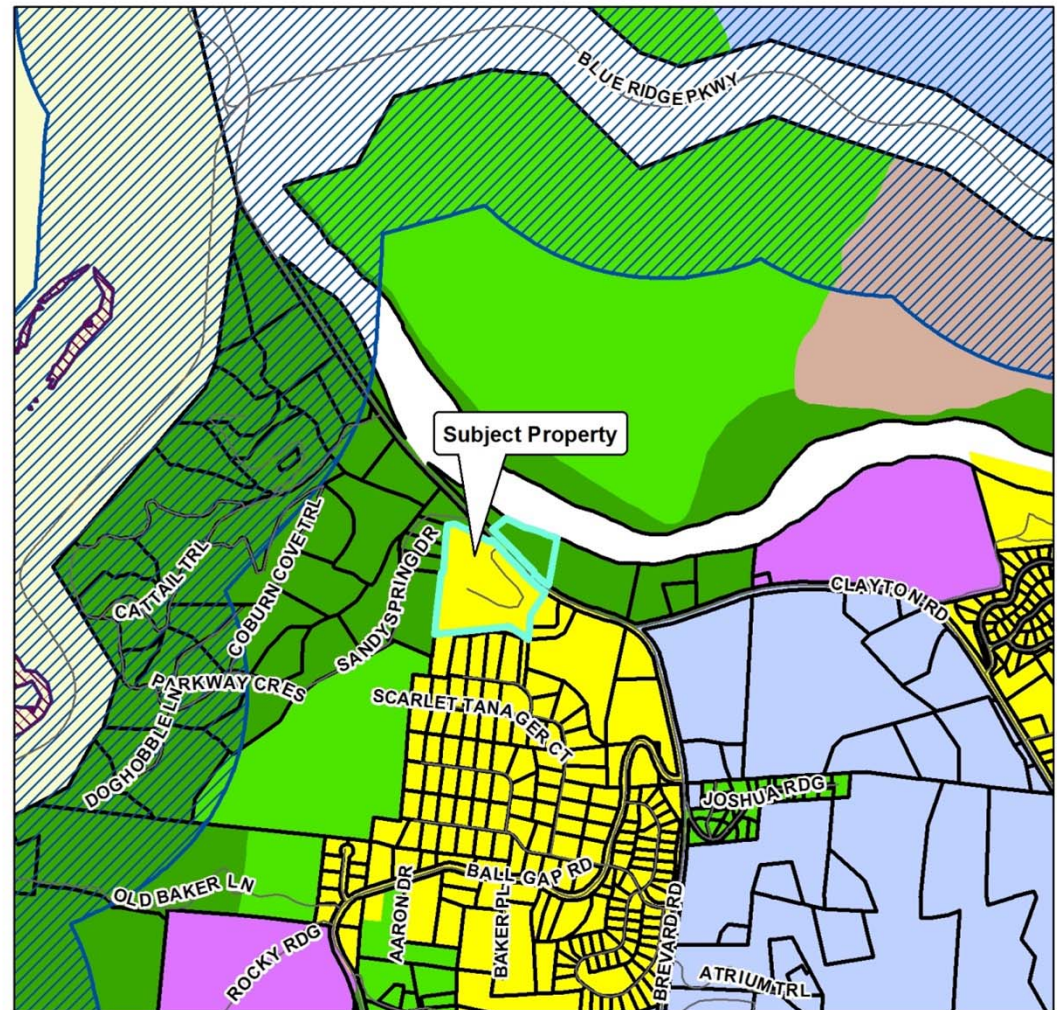
Staff Recommendation:

- Denial

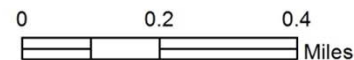
Planning Board

Recommendation:

- Denial



**Jack Ohlhaber
Map Amendment**



Zoning Districts		Zoning Overlays	
BDM	R-1	Blue Ridge Parkway Overlay	Protected Ridge Overlay
CS	R-2	Protected Ridge & Parkway	Steep Slope/High Elev.
EMP	R-3	Steep Slope/High Elev. & Pkwy	
NS	R-LD		
OU			

Case Number: ZPH2014-00027
Approximate Property Size: 14.86 acres
Application Date: April 11, 2014
Planning Board Hearing Date: May 19, 2014



Created By: Buncombe County Planning
Date: April 14, 2014