

# Lutheridge/Lutherock

## Map 1: Topography

### Requested Zoning:

- Conference Center / Resort District (CR)

### Current Zoning:

- Residential District R-2

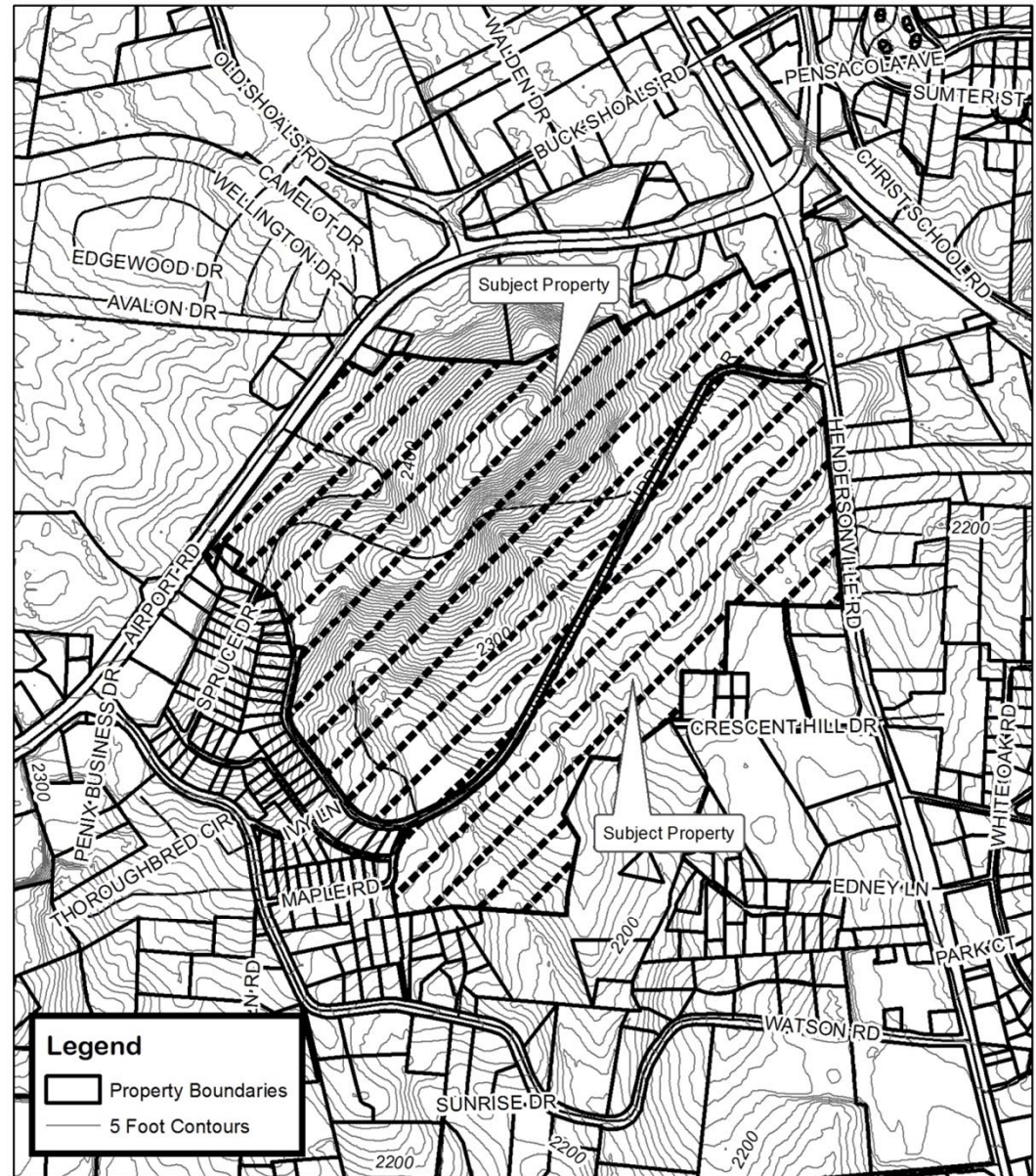
### Staff Recommendation:

- Approval

### Planning Board Recommendation:

### Recommendation:

- Approval



### Lutheridge/Lutherock Ministries Map Amendment

Case Number: ZPH2014-00026  
Approximate Property Size: 151.79 acres  
Application Date: April 8, 2014  
Planning Board Hearing Date: May 19, 2014



Created By: Buncombe County Planning  
Date: April 14, 2014

# Lutheridge/Lutherock

## Map 2: Aerial Photo

### Requested Zoning:

- Conference Center / Resort District (CR)

### Current Zoning:

- Residential District R-2

### Staff Recommendation:

- Approval

### Planning Board Recommendation:

### Recommendation:

- Approval



### Lutheridge/Lutherock Ministries Map Amendment

Case Number: ZPH2014-00026  
Approximate Property Size: 151.79 acres  
Application Date: April 8, 2014  
Planning Board Hearing Date: May 19, 2014



0 300 600 1,200  
Feet

Created By: Buncombe County Planning  
Date: April 14, 2014

# Lutheridge/Lutherock

## Map 3: Land Use Constraints

### Requested Zoning:

- Conference Center / Resort District (CR)

### Current Zoning:

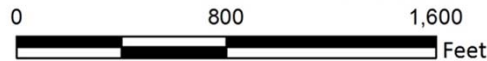
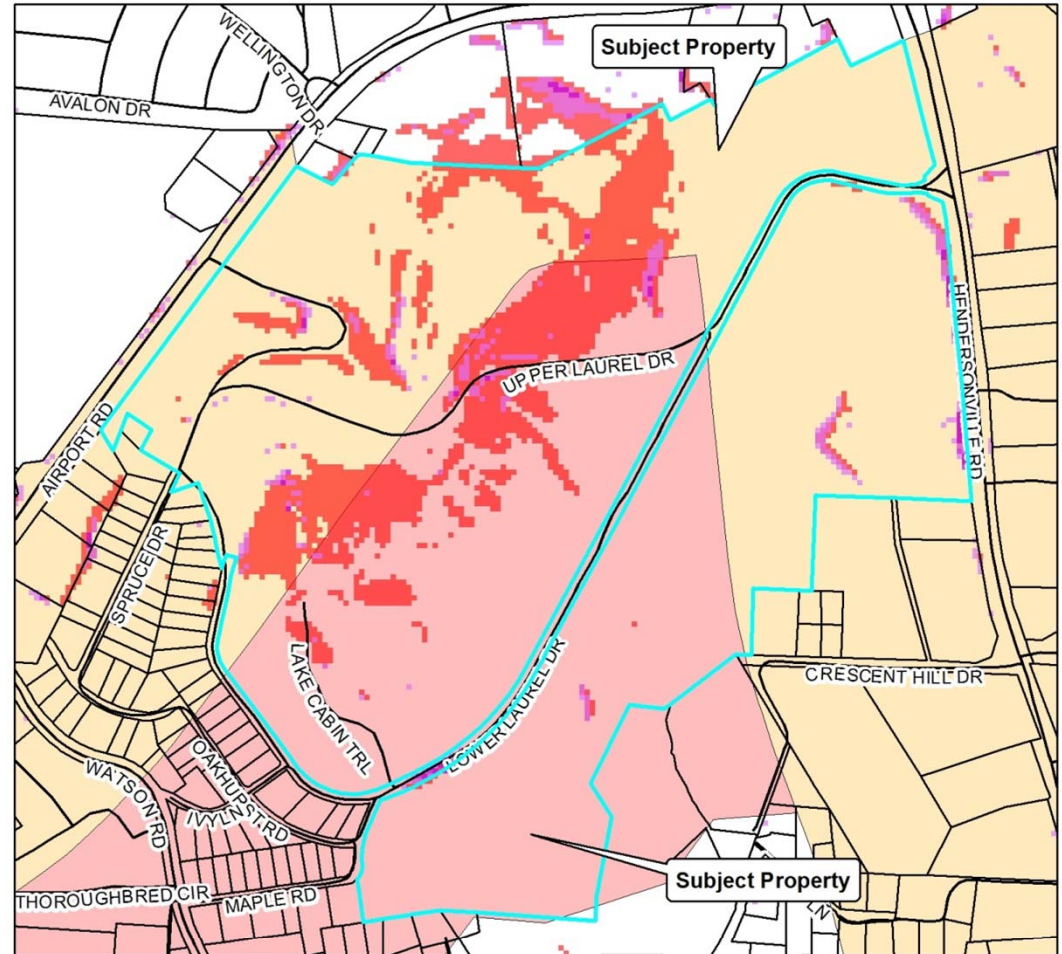
- Residential District R-2

### Staff Recommendation:

- Approval

### Planning Board Recommendation:

- Approval



### Lutheridge/Lutherock Ministries Map Amendment

Case Number: ZPH2014-00026  
 Approximate Property Size: 151.79 acres  
 Application Date: April 8, 2014  
 Planning Board Hearing Date: May 19, 2014

Created By: Buncombe County Planning  
 Date: April 14, 2014

