

# YMCA Blue Ridge Assembly

## Map 1: Topography

### Requested Zoning:

- Conference Center / Resort District (CR)

### Current Zoning:

- Low-Density Residential (R-LD)
- Public Service (PS)

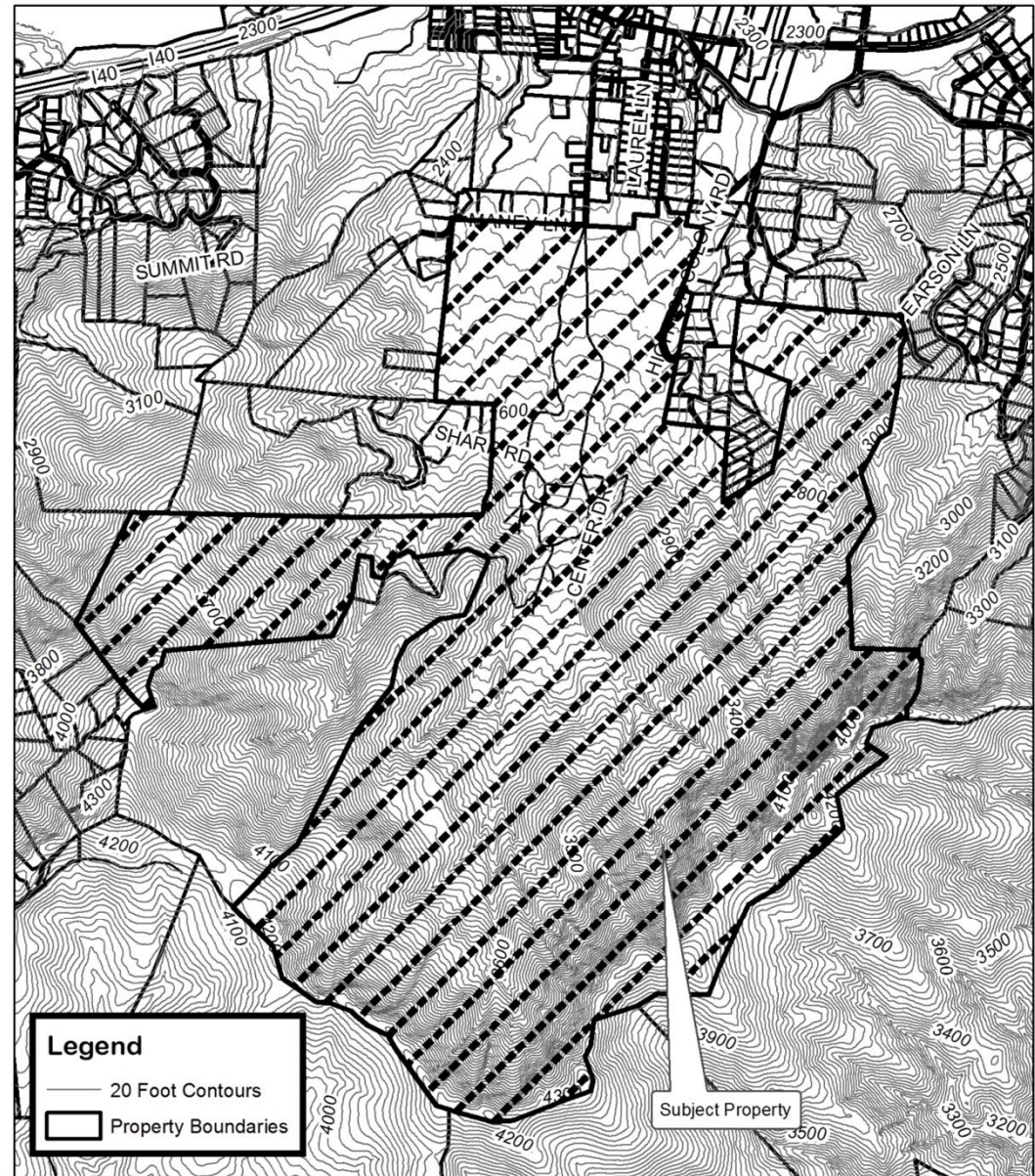
### Staff Recommendation:

- Approval

### Planning Board

### Recommendation:

- Approval



### YMCA Blue Ridge Assembly Map Amendment

Case Number: ZPH2014-00024

Approximate Property Size: 1,153.53 acres

Application Date: April 2, 2014

Planning Board Hearing Date: May 5, 2014



Created By: Buncombe County Planning  
Date: April 10, 2014



# YMCA Blue Ridge Assembly

## Map 2: Aerial Photo

### Requested Zoning:

- Conference Center / Resort District (CR)

### Current Zoning:

- Low-Density Residential (R-LD)
- Public Service (PS)

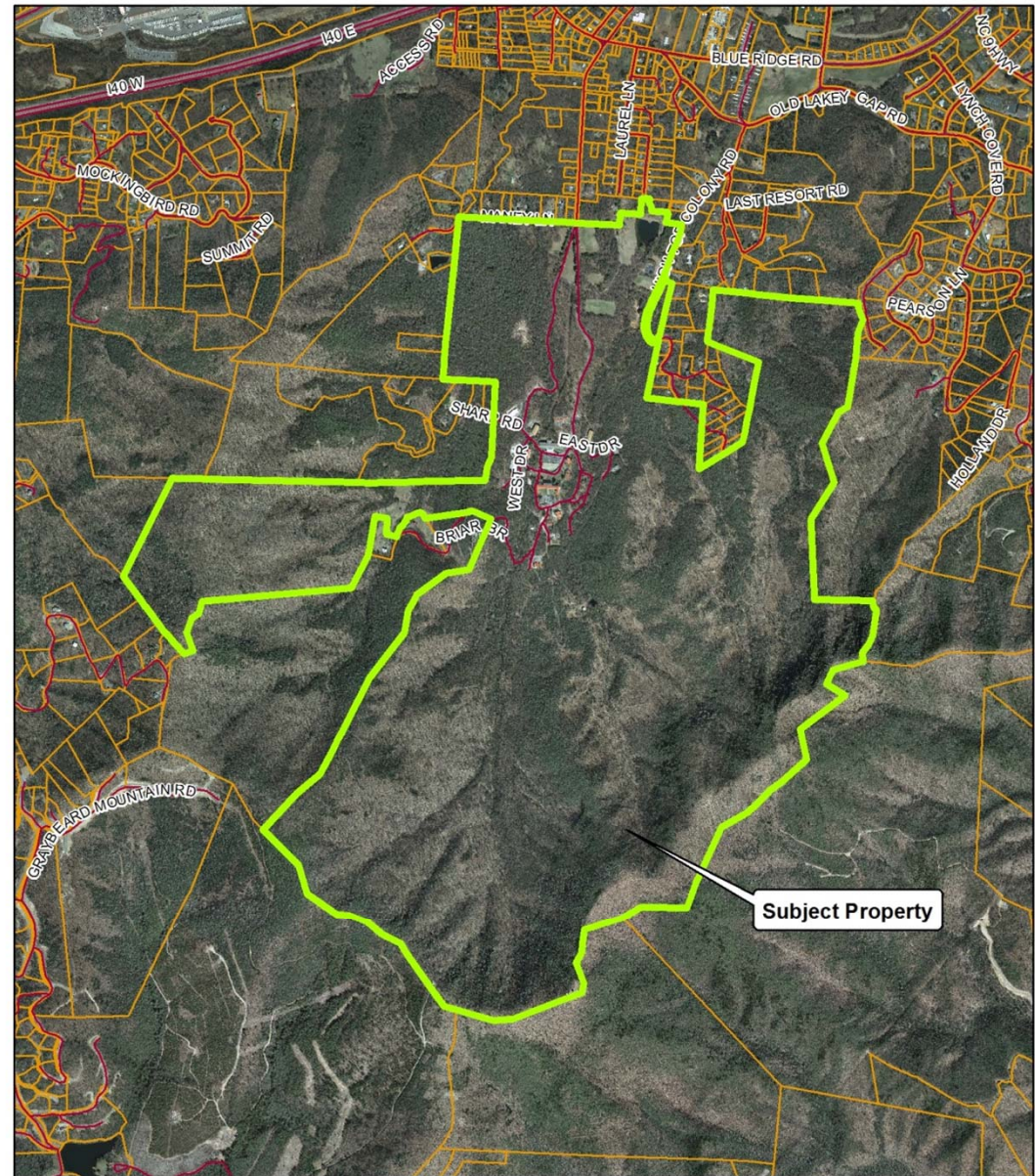
### Staff Recommendation:

- Approval

### Planning Board

### Recommendation:

- Approval



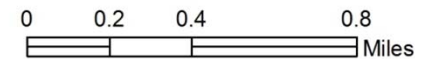
### YMCA Blue Ridge Assembly Map Amendment

Case Number: ZPH2014-00024

Approximate Property Size: 1,153.53 acres

Application Date: April 2, 2014

Planning Board Hearing Date: May 5, 2014



Created By: Buncombe County Planning  
Date: April 10, 2014



# YMCA Blue Ridge Assembly

## Map 3: Land Use Constraints

### Requested Zoning:

- Conference Center / Resort District (CR)

### Current Zoning:

- Low-Density Residential (R-LD)
- Public Service (PS)

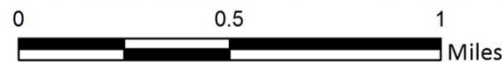
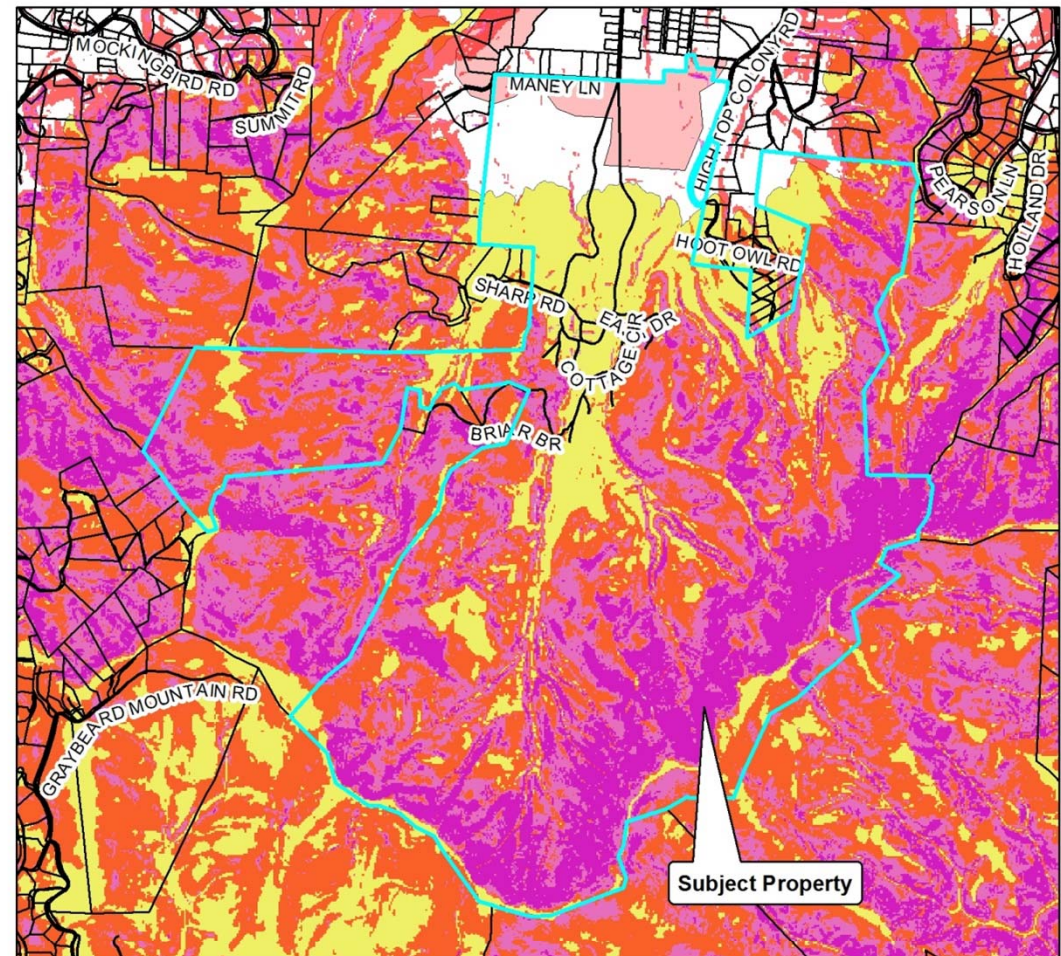
### Staff Recommendation:

- Approval

### Planning Board

### Recommendation:

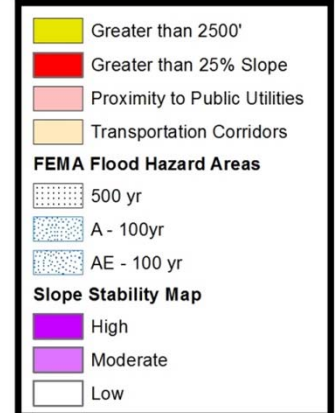
- Approval



### YMCA Blue Ridge Assembly Map Amendment

Case Number: ZPH2014-00024  
 Approximate Property Size: 1,153.53 acres  
 Application Date: April 2, 2014  
 Planning Board Hearing Date: May 5, 2014

Created By: Buncombe County Planning  
 Date: April 10, 2014





# YMCA Blue Ridge Assembly

## Map 4: Zoning

### Requested Zoning:

- Conference Center / Resort District (CR)

### Current Zoning:

- Low-Density Residential (R-LD)
- Public Service (PS)

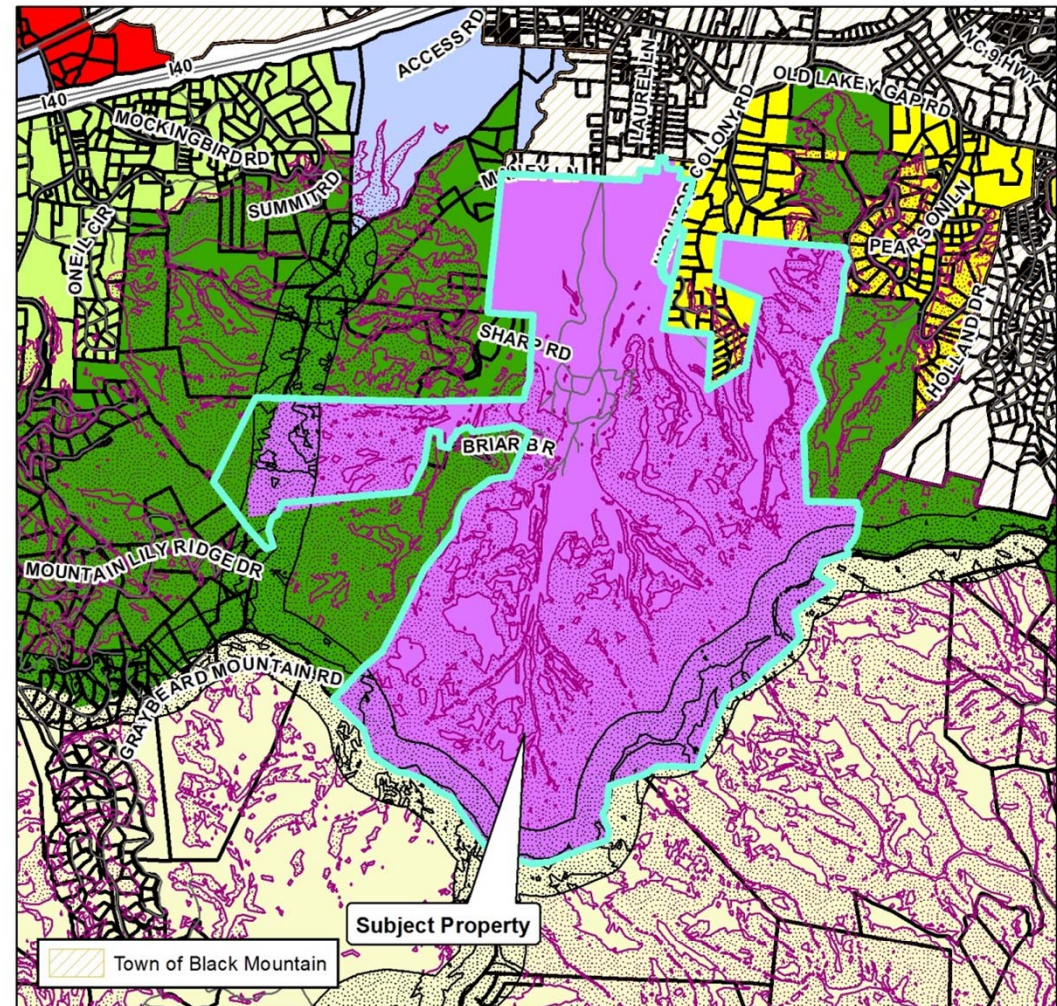
### Staff Recommendation:

- Approval

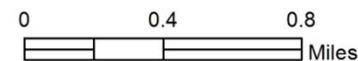
### Planning Board

### Recommendation:

- Approval



### YMCA Blue Ridge Assembly Map Amendment



Zoning Districts		Zoning Overlays	
BDM	PS	Blue Ridge Parkway Overlay	
CS	R-1	Protected Ridge Overlay	
EMP	R-2	Protected Ridge & Parkway	
NS	R-3	Steep Slope/High Elev.	
OU	R-LD	Steep Slope/High Elev. & Pkwy	

Case Number: ZPH2014-00024  
 Approximate Property Size: 1,153.53 acres  
 Application Date: April 2, 2014  
 Planning Board Hearing Date: May 5, 2014



Created By: Buncombe County Planning  
 Date: April 10, 2014