

Jesse Gardner

Map 1: Topography

Requested Zoning:

- Commercial Service District (CS)

Current Zoning:

- Employment District (EMP)

Staff Recommendation:

- Approval

Planning Board

Recommendation:

- Approval



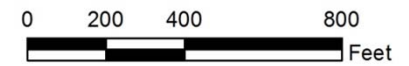
Jesse Gardner Map Amendment

Case Number: ZPH2013-00065

Approximate Property Size: 1.34 acres

Application Date: December 6, 2013

Planning Board Hearing Date: January 6, 2014



Created By: Buncombe County Planning
Date: December 12, 2013

Jesse Gardner

Map 2: Aerial Photo

Requested Zoning:

- Commercial Service District (CS)

Current Zoning:

- Employment District (EMP)

Staff Recommendation:

- Approval

Planning Board

Recommendation:

- Approval



Jesse Gardner Map Amendment

Case Number: ZPH2013-00065

Approximate Property Size: 1.34 acres

Application Date: December 6, 2013

Planning Board Hearing Date: January 6, 2014



0 100 200 400
Feet

Created By: Buncombe County Planning
Date: December 12, 2013

Jesse Gardner

Map 3: Land Use Constraints

Requested Zoning:

- Commercial Service District (CS)

Current Zoning:

- Employment District (EMP)

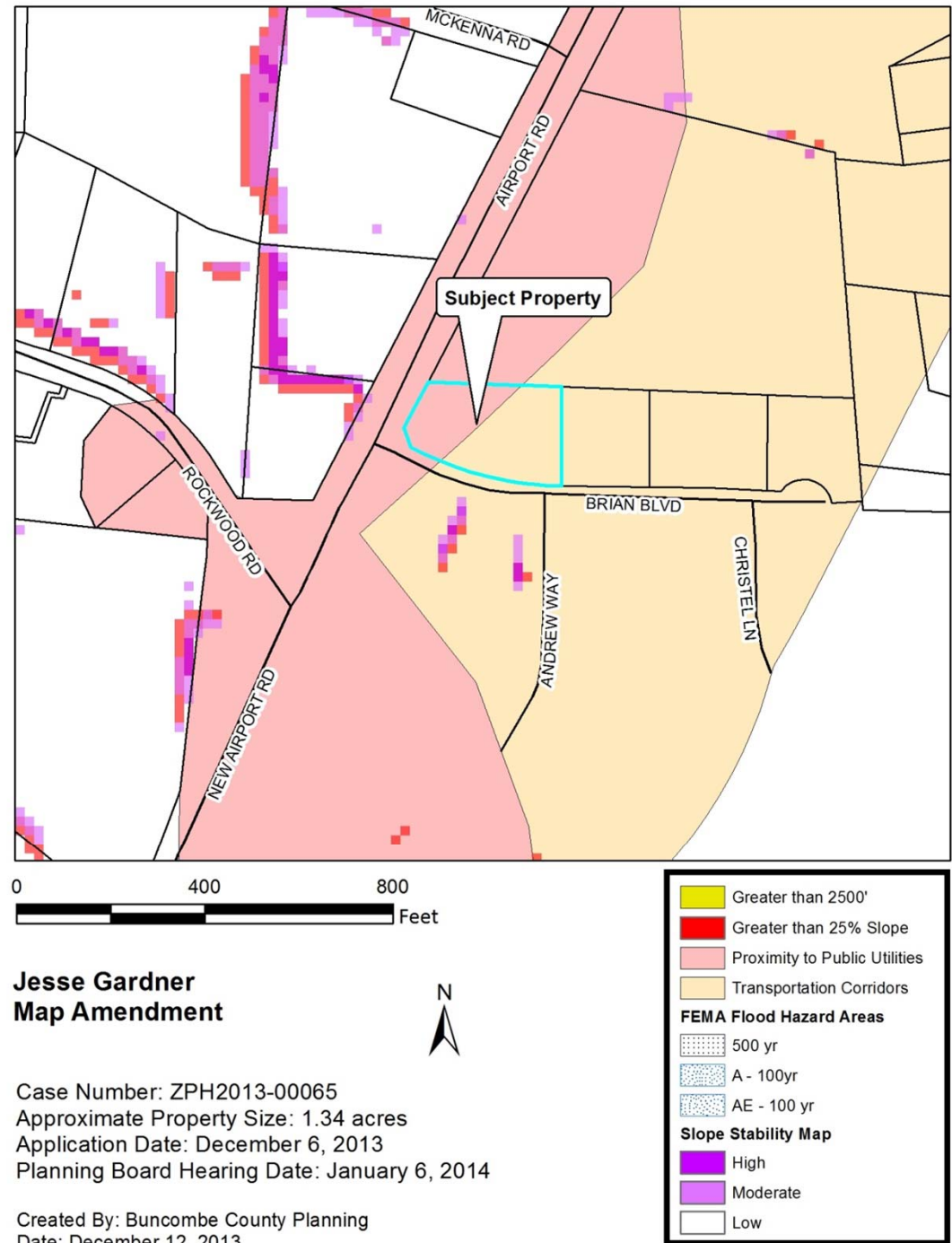
Staff Recommendation:

- Approval

Planning Board

Recommendation:

- Approval



Jesse Gardner

Map 4: Zoning

Requested Zoning:

- Commercial Service District (CS)

Current Zoning:

- Employment District (EMP)

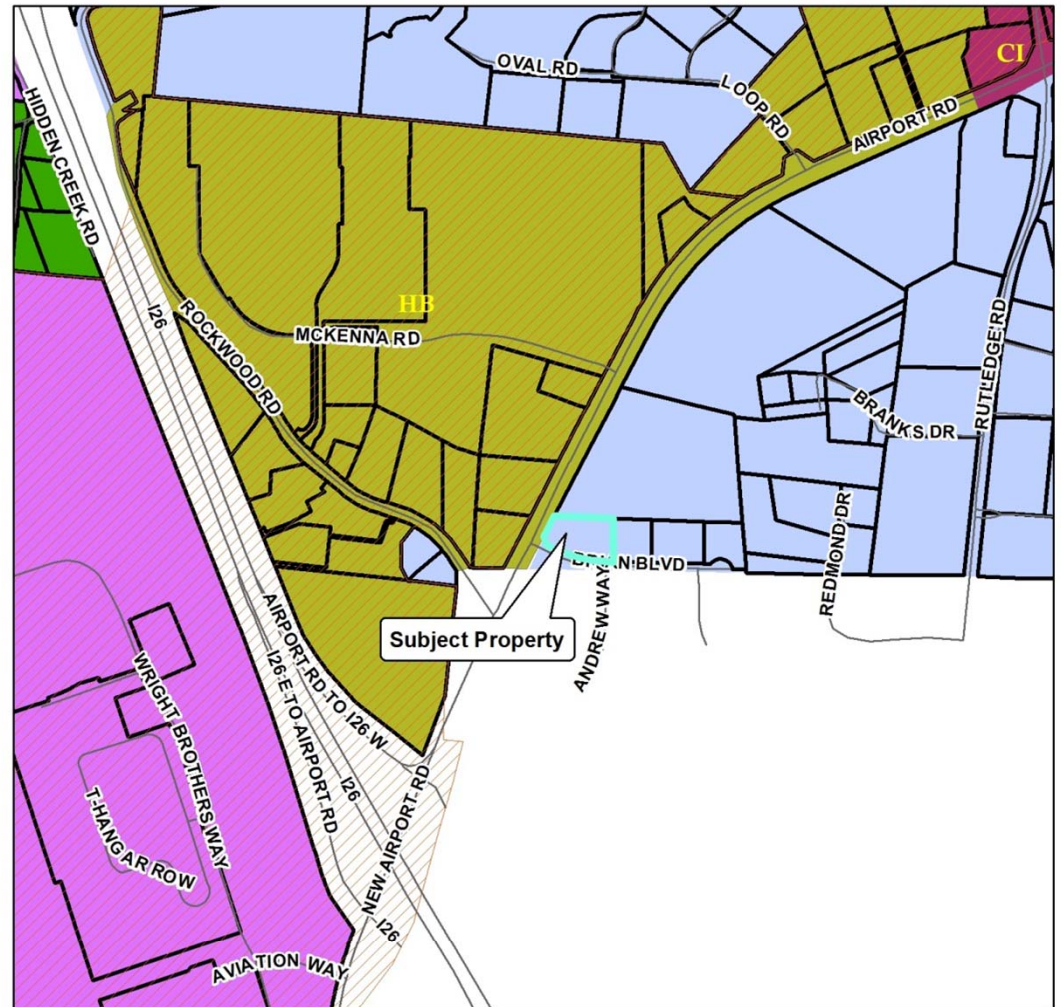
Staff Recommendation:

- Approval

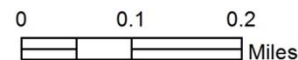
Planning Board

Recommendation:

- Approval



Jesse Gardner Map Amendment



Case Number: ZPH2013-00065
Approximate Property Size: 1.34 acres
Application Date: December 6, 2013
Planning Board Hearing Date: January 6, 2014

Zoning Districts		Zoning Overlays	
CITY OF ASHEVILLE	PS	Blue Ridge Parkway Overlay	Protected Ridge Overlay
BDM	R-1	Protected Ridge & Parkway	Steep Slope/High Elev.
CS	R-2	Steep Slope/High Elev. & Pkwy	
EMP	R-3		
NS	R-LD		



Created By: Buncombe County Planning
Date: December 12, 2013