

# Biltmore Farms

## Map 1: Topography

### Requested Zoning:

- Commercial Service District (CS)

### Current Zoning:

- Residential District R-3

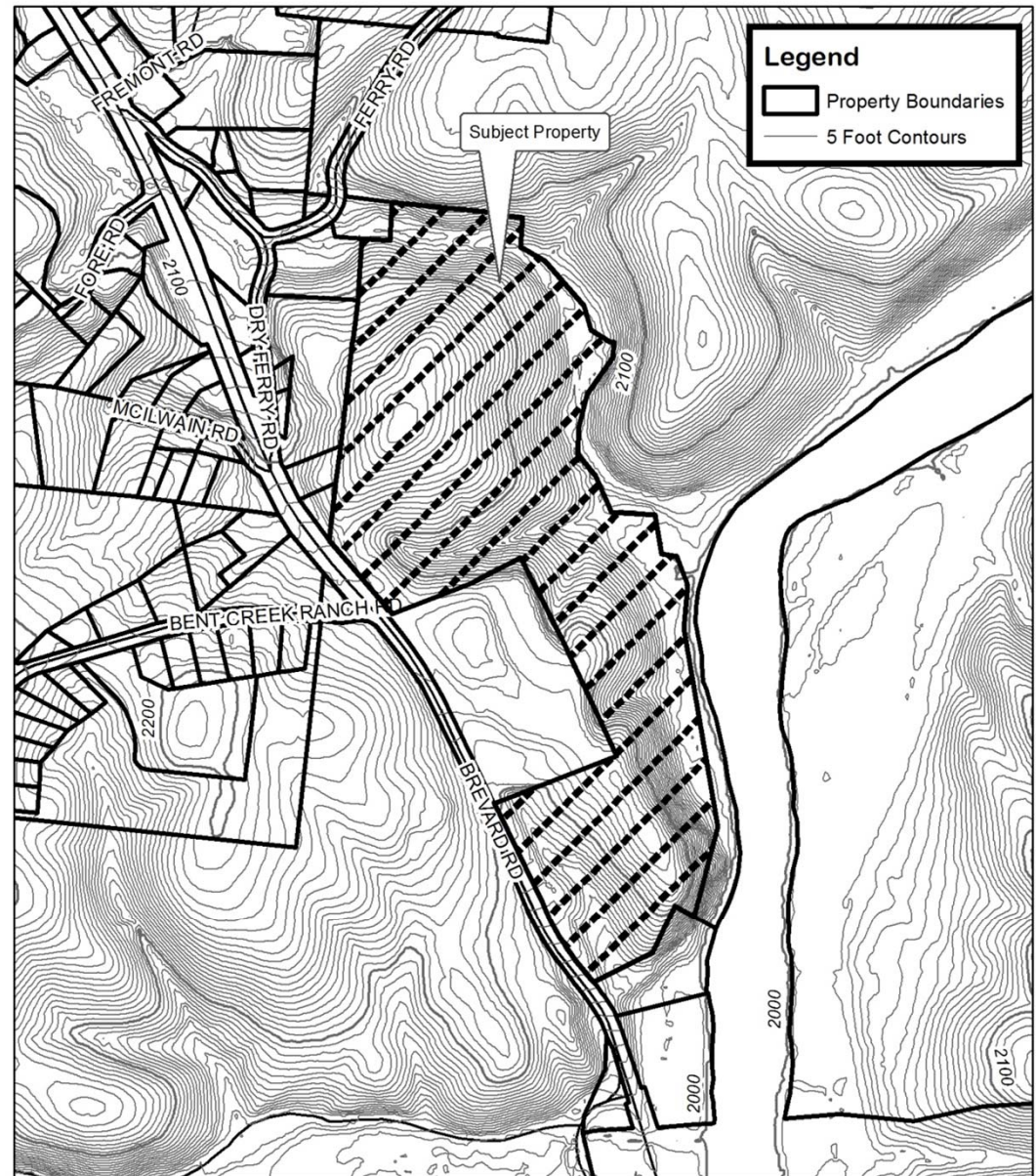
### Staff Recommendation:

- Approval

### Planning Board

### Recommendation:

- Approval



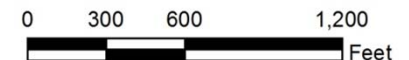
### Biltmore Farms Map Amendment

Case Number: ZPH2013-00054

Approximate Property Size: 42.6 acres

Application Date: November 21, 2013

Planning Board Hearing Date: January 6, 2014



Created By: Buncombe County Planning  
Date: December 11, 2013



# Biltmore Farms

## Map 2: Aerial Photo

### Requested Zoning:

- Commercial Service District (CS)

### Current Zoning:

- Residential District R-3

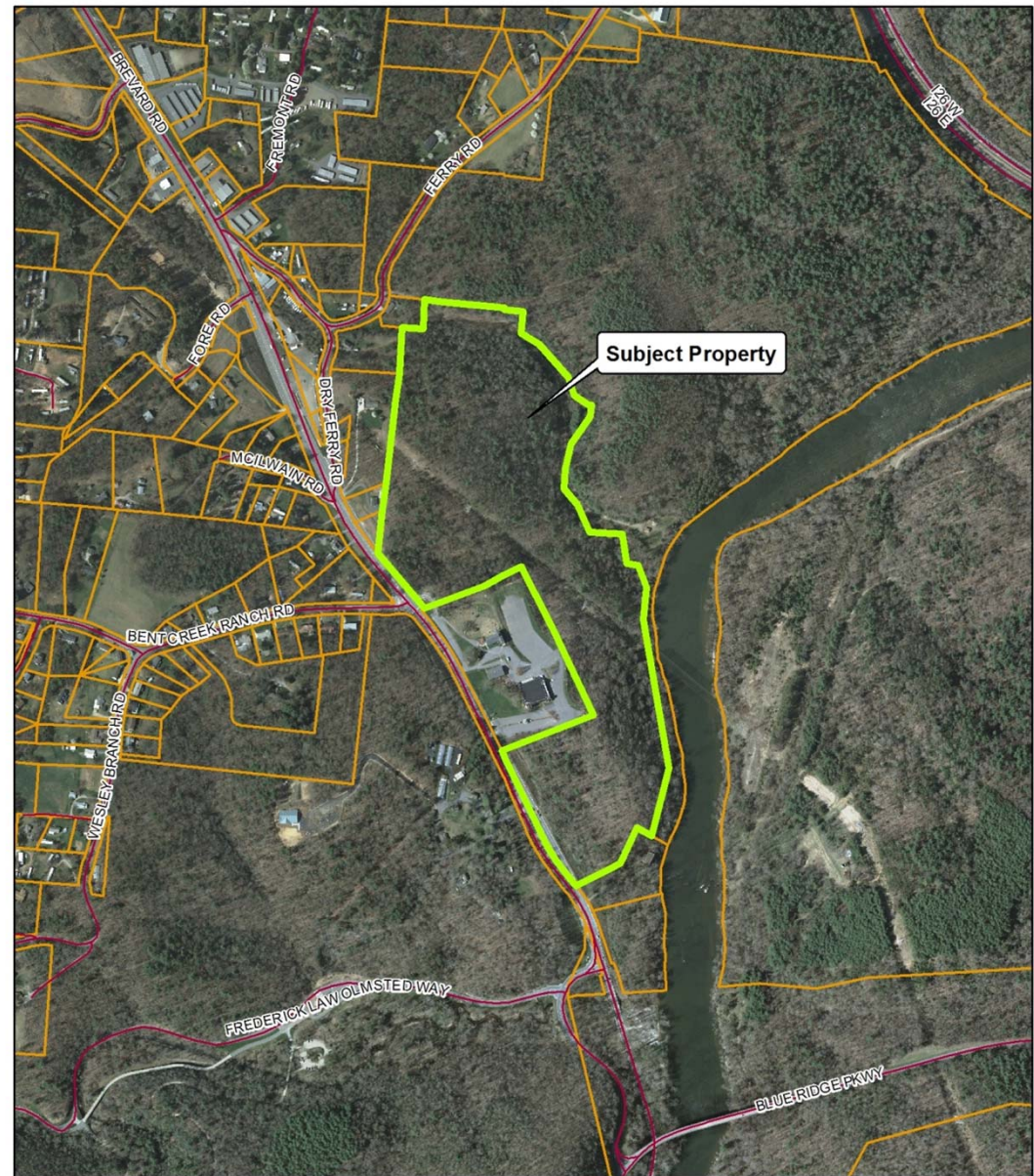
### Staff Recommendation:

- Approval

### Planning Board

### Recommendation:

- Approval



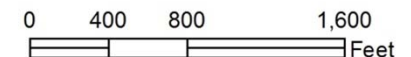
### Biltmore Farms Map Amendment

Case Number: ZPH2013-00054

Approximate Property Size: 42.6 acres

Application Date: November 21, 2013

Planning Board Hearing Date: January 6, 2014



Created By: Buncombe County Planning  
Date: December 11, 2013



# Biltmore Farms

## Map 3: Land Use Constraints

### Requested Zoning:

- Commercial Service District (CS)

### Current Zoning:

- Residential District R-3

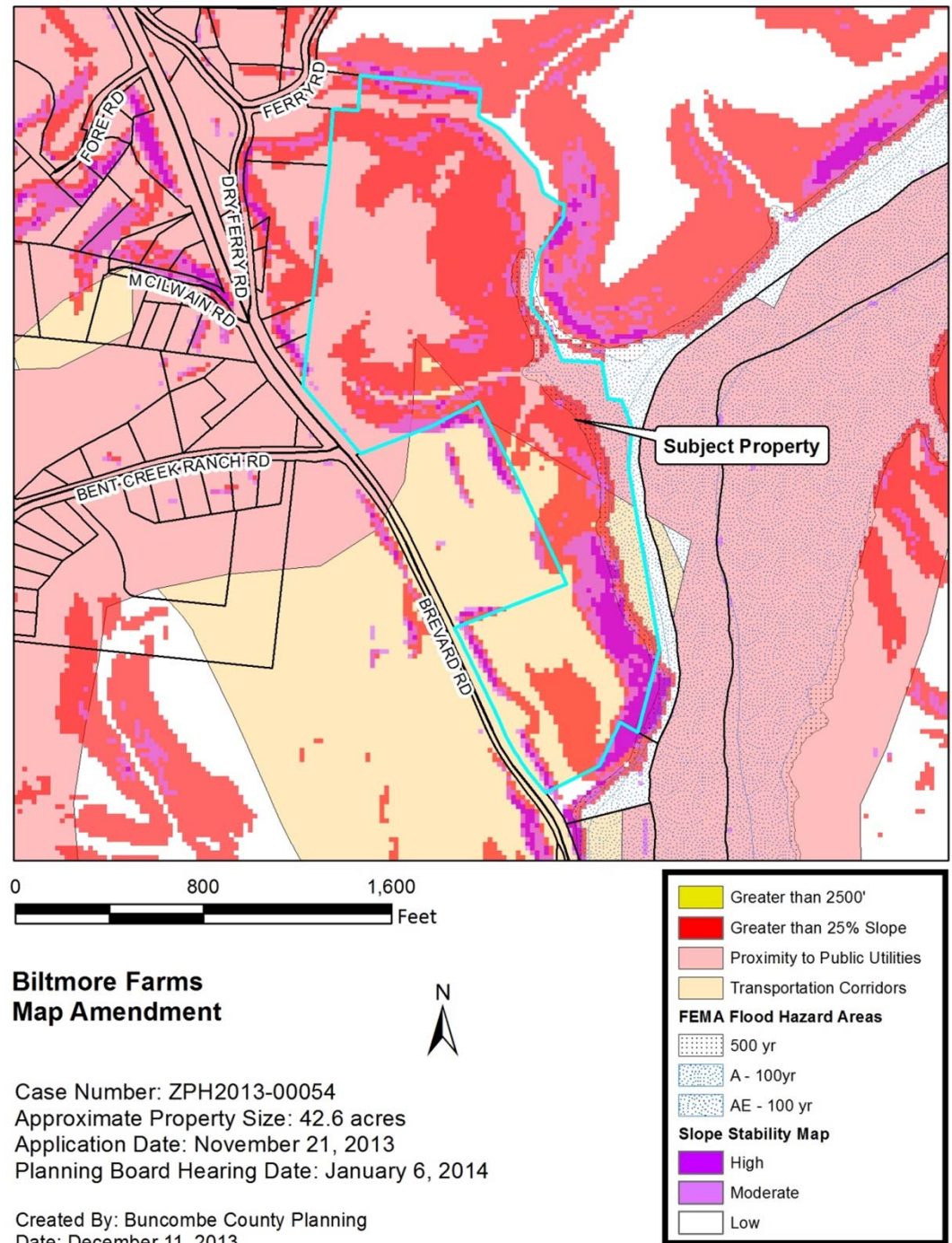
### Staff Recommendation:

- Approval

### Planning Board

### Recommendation:

- Approval



## Map 4: Zoning

Requested Zoning:

- Commercial Service District (CS)

## Current Zoning:

- Residential District R-3

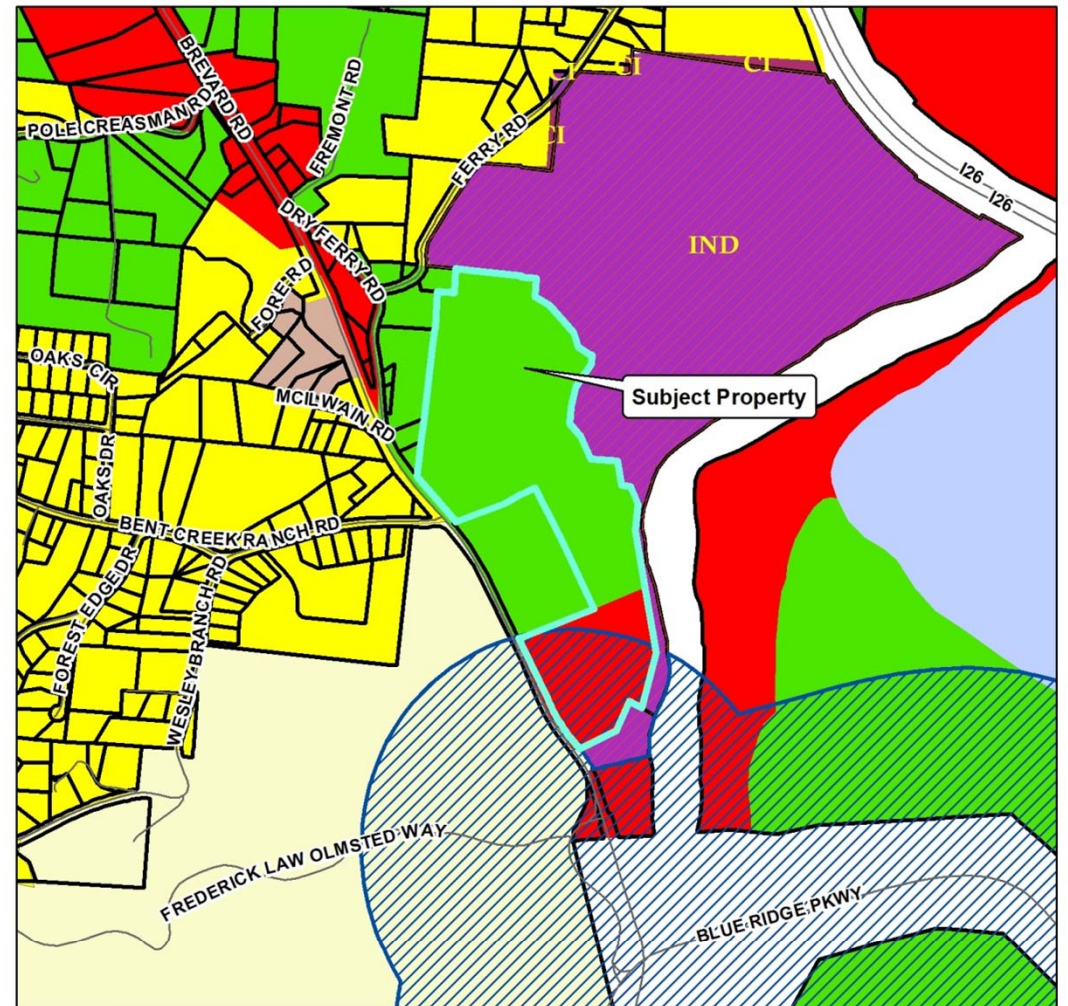
### Staff Recommendation:

- Approval

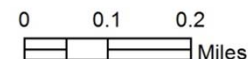
# Planning Board

## Recommendation:

- Approval



# Biltmore Farms Map Amendment



Case Number: ZPH2013-00054  
Approximate Property Size: 42.6 acres  
Application Date: November 21, 2013  
Planning Board Hearing Date: January 6, 2014



Created By: Buncombe County Planning  
Date: December 11, 2013