

Craig Coggins

Map 1: Topography

Requested Zoning:

- Public Service District (PS)

Current Zoning:

- Residential District R-2

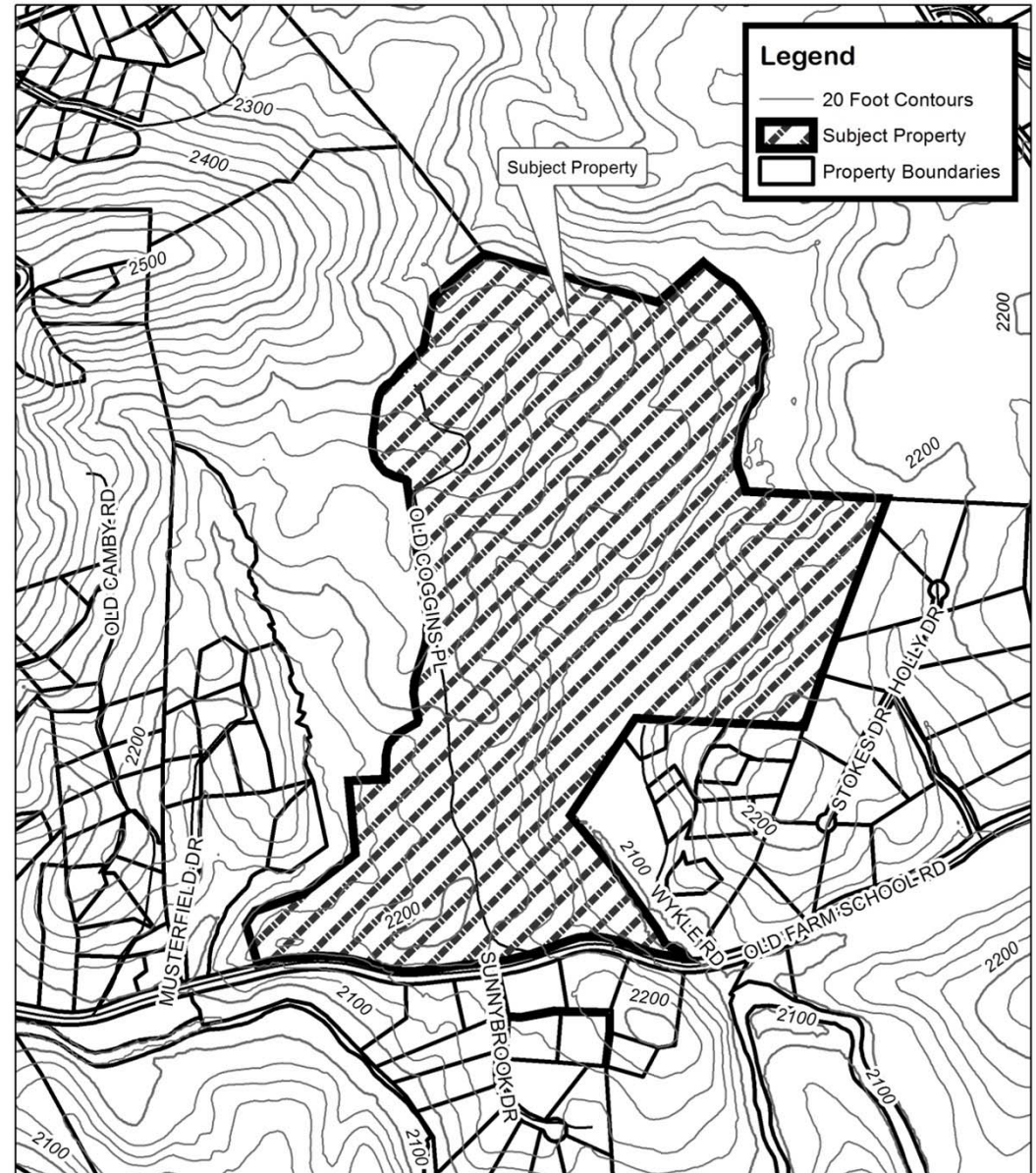
Staff Recommendation:

- Approval

Planning Board

Recommendation:

- Approval



Craig Coggins Map Amendment

Case Number: ZPH2013-00051

Approximate Property Size: 106.81 acres

Application Date: November 15, 2013

Planning Board Hearing Date: December 16, 2013

Created By: Buncombe County Planning
Date: November 24, 2013

Craig Coggins

Map 2: Aerial Photo

Requested Zoning:

- Public Service District (PS)

Current Zoning:

- Residential District R-2

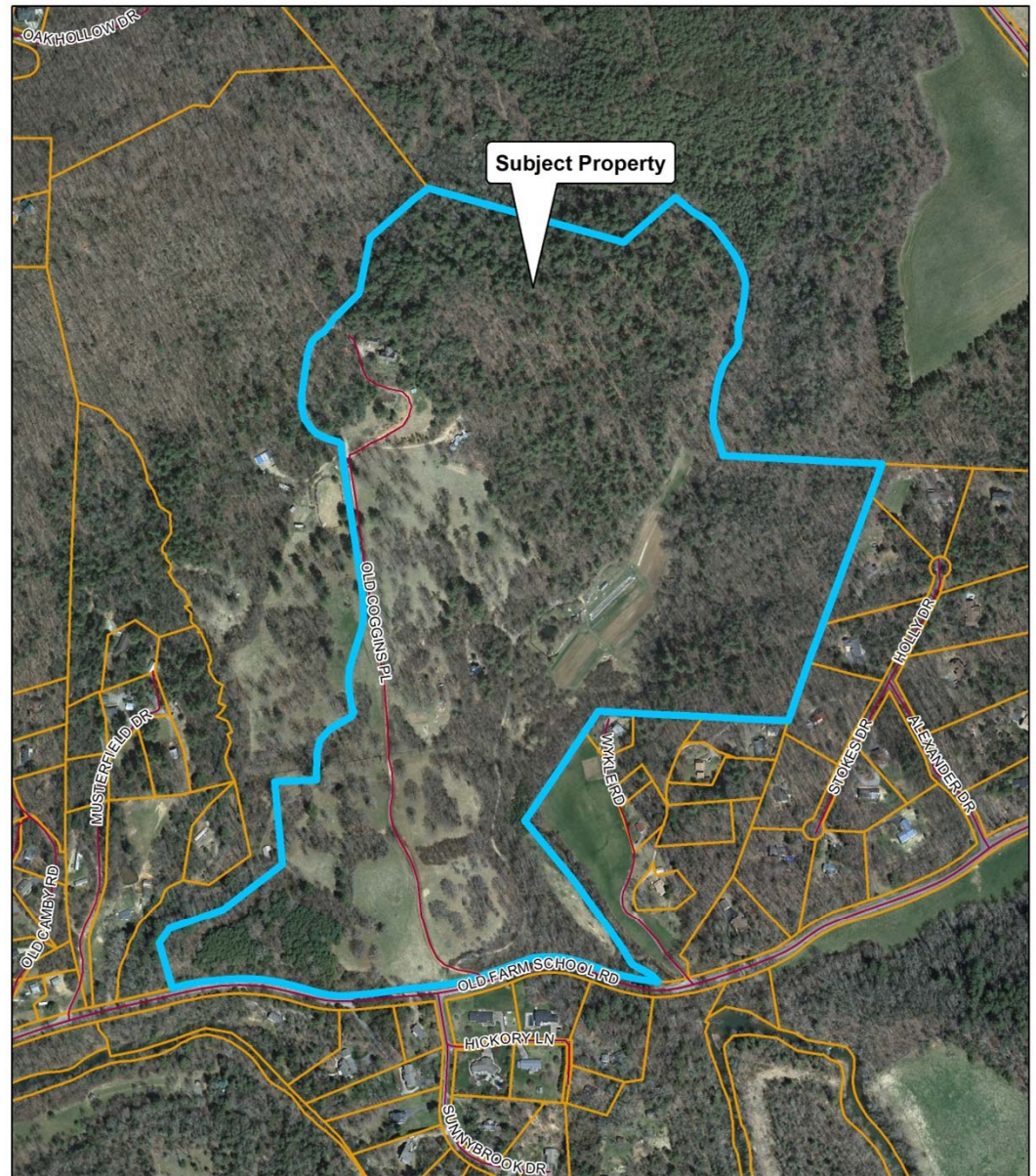
Staff Recommendation:

- Approval

Planning Board

Recommendation:

- Approval



Craig Coggins Map Amendment

Case Number: ZPH2013-00051

Approximate Property Size: 106.81 acres

Application Date: November 15, 2013

Planning Board Hearing Date: December 16, 2013



0 250 500 1,000
Feet

Created By: Buncombe County Planning
Date: November 24, 2013

Craig Coggins

Map 3: Land Use Constraints

Requested Zoning:

- Public Service District (PS)

Current Zoning:

- Residential District R-2

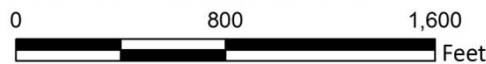
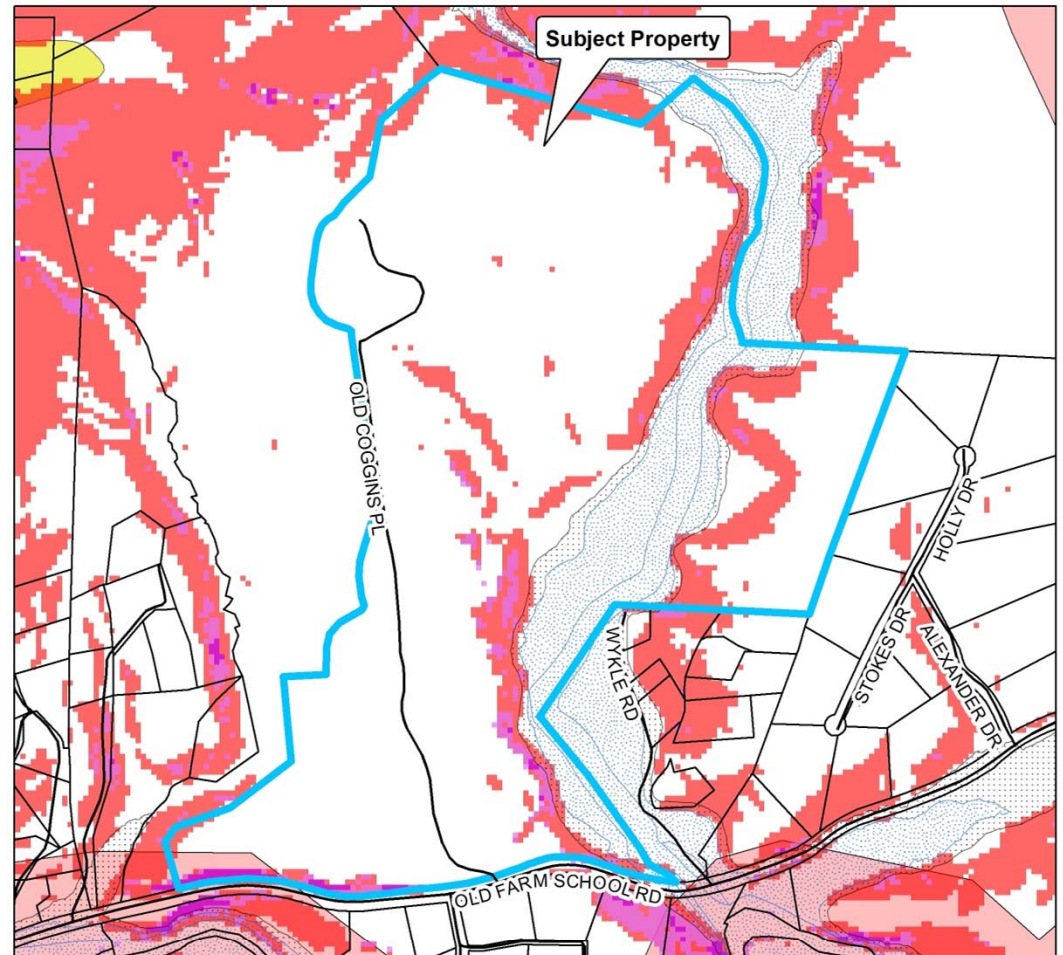
Staff Recommendation:

- Approval

Planning Board Recommendation:

Recommendation:

- Approval

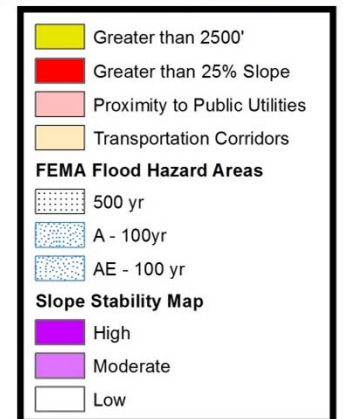


Craig Coggins Map Amendment



Case Number: ZPH2013-00051
Approximate Property Size: 106.81 acres
Application Date: November 15, 2013
Planning Board Hearing Date: December 16, 2013

Created By: Buncombe County Planning
Date: November 24, 2013



Craig Coggins

Map 4: Zoning

Requested Zoning:

- Public Service District (PS)

Current Zoning:

- Residential District R-2

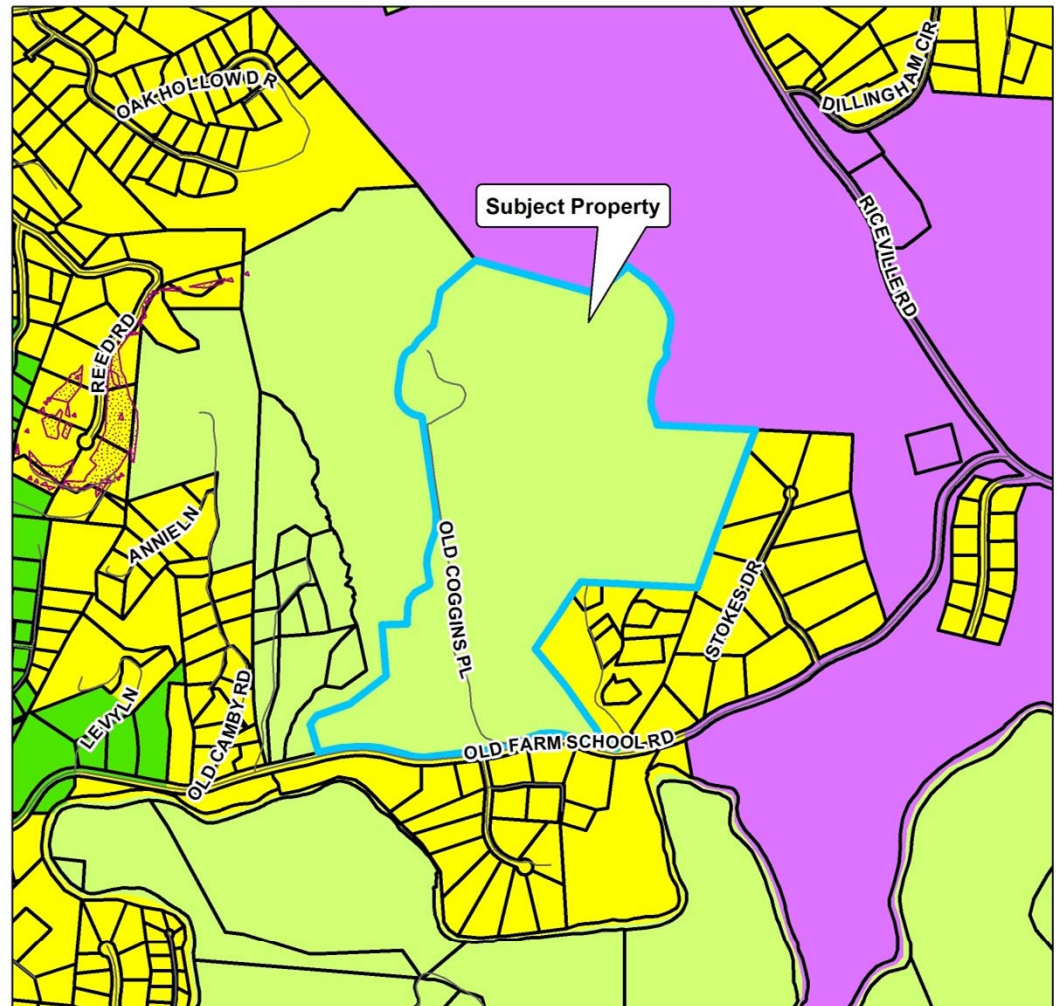
Staff Recommendation:

- Approval

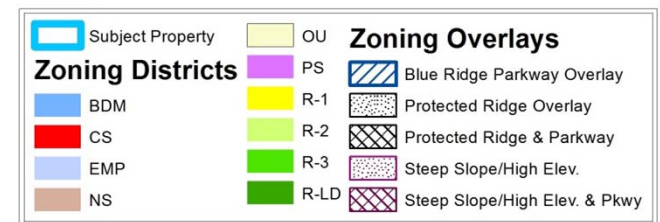
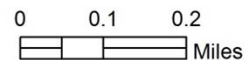
Planning Board

Recommendation:

- Approval



**Craig Coggins
Map Amendment**



Case Number: ZPH2013-00051
Approximate Property Size: 106.81 acres
Application Date: November 15, 2013
Planning Board Hearing Date: December 16, 2013



Created By: Buncombe County Planning
Date: November 24, 2013