

Frances Briggs & Gary Corn

Map 1: Topography

Requested Zoning:

- Employment District (EMP)

Current Zoning:

- Residential District R-2

Staff Recommendation:

- Approval

Planning Board

Recommendation:

- Approval



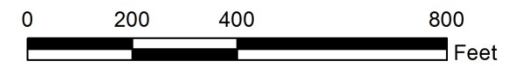
Frances Briggs & Gary Corn Map Amendment

Case Number: ZPH2013-00027

Approximate Property Size: 10.8 acres

Application Date: September 27, 2013

Planning Board Hearing Date: November 4, 2013



Created By: Buncombe County Planning
Date: November 5, 2013

Frances Briggs & Gary Corn

Map 2: Aerial Photo

Requested Zoning:

- Employment District (EMP)

Current Zoning:

- Residential District R-2

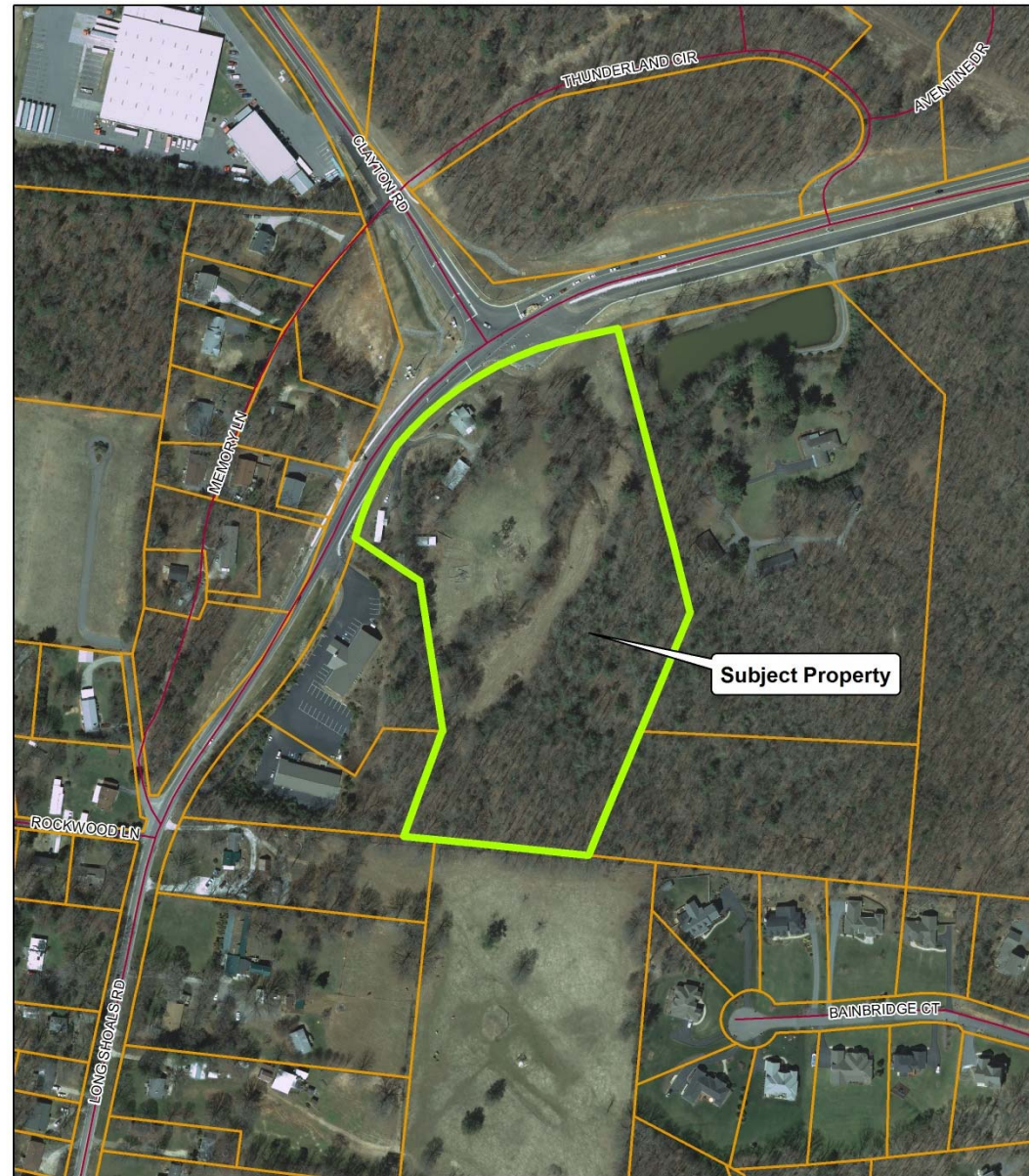
Staff Recommendation:

- Approval

Planning Board

Recommendation:

- Approval



Frances Briggs & Gary Corn Map Amendment

Case Number: ZPH2013-00027

Approximate Property Size: 10.8 acres

Application Date: September 27, 2013

Planning Board Hearing Date: November 4, 2013



0 150 300 600
Feet

Created By: Buncombe County Planning
Date: November 11, 2013

Frances Briggs & Gary Corn

Map 3: Land Use Constraints

Requested Zoning:

- Employment District (EMP)

Current Zoning:

- Residential District R-2

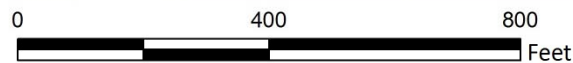
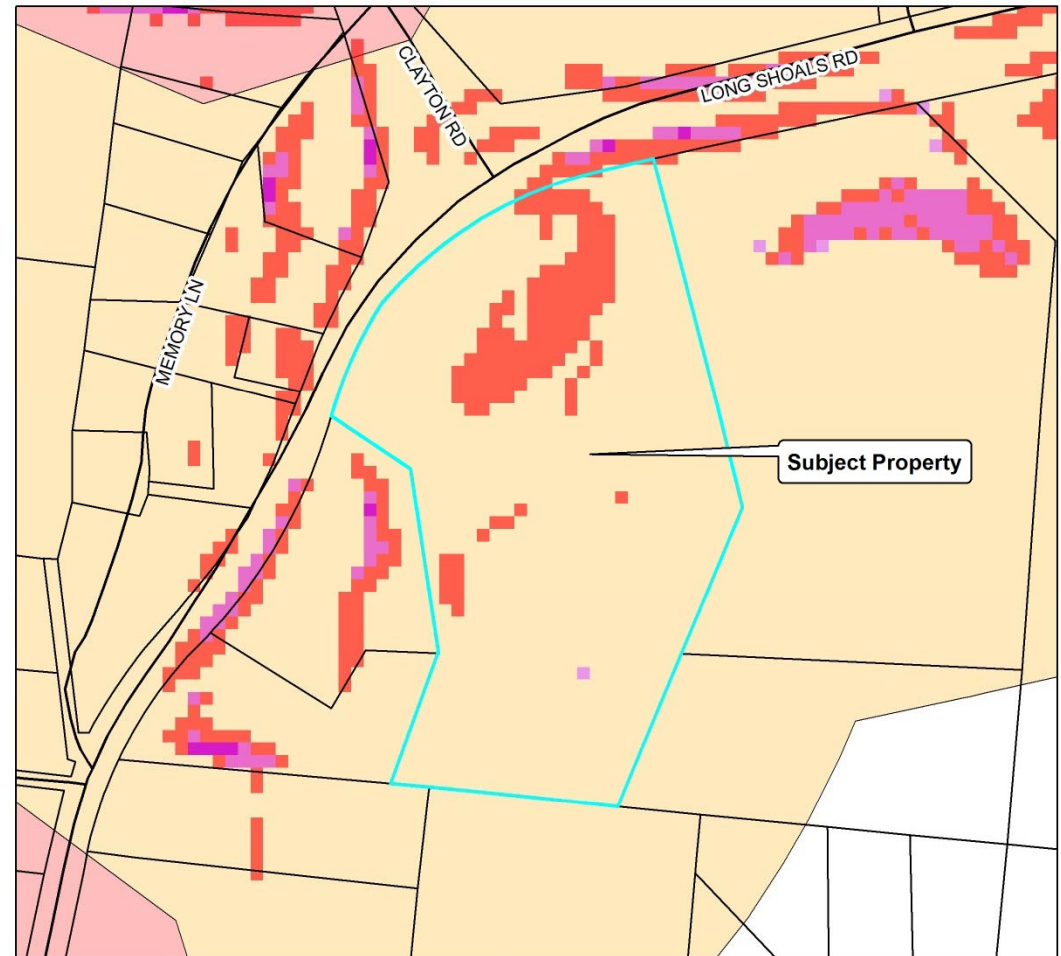
Staff Recommendation:

- Approval

Planning Board

Recommendation:

- Approval

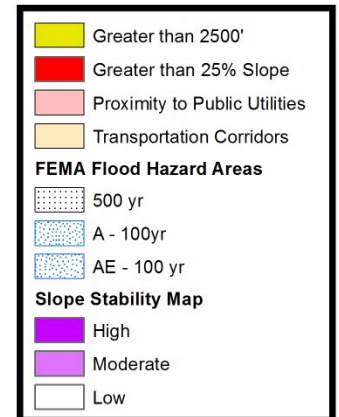


Frances Briggs & Gary Corn Map Amendment



Case Number: ZPH2013-00027
Approximate Property Size: 10.8 acres
Application Date: September 27, 2013
Planning Board Hearing Date: November 4, 2013

Created By: Buncombe County Planning
Date: November 5, 2013



Frances Briggs & Gary Corn

Map 4: Zoning

Requested Zoning:

- Employment District (EMP)

Current Zoning:

- Residential District R-2

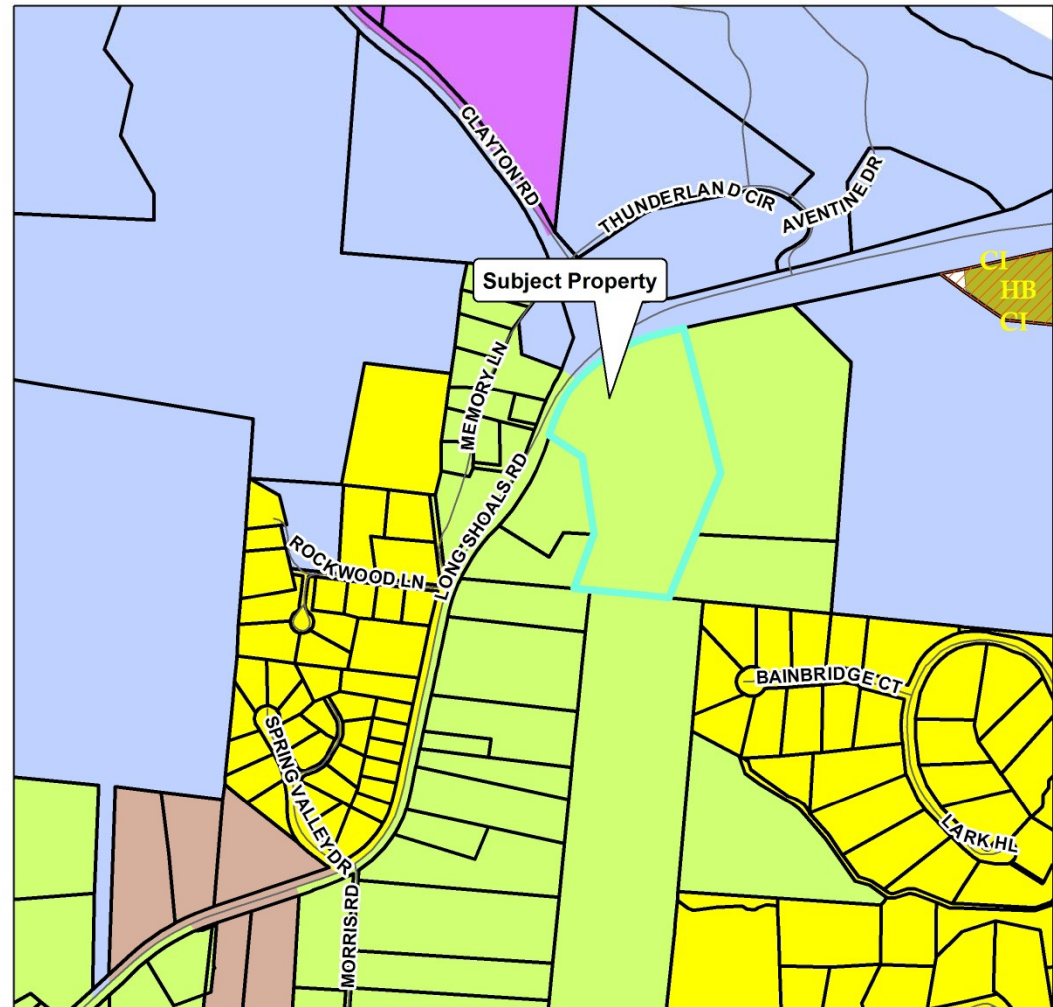
Staff Recommendation:

- Approval

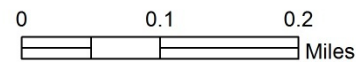
Planning Board

Recommendation:

- Approval



Frances Briggs & Gary Corn Map Amendment



Case Number: ZPH2013-00027
 Approximate Property Size: 10.8 acres
 Application Date: September 27, 2013
 Planning Board Hearing Date: November 4, 2013



Zoning Districts		Zoning Overlays	
CITY OF ASHEVILLE	OU	Blue Ridge Parkway Overlay	PS
BDM	R-1	Protected Ridge Overlay	R-2
CS	R-2	Protected Ridge & Parkway	R-3
EMP	R-3	Steep Slope/High Elev.	R-LD
NS	R-LD	Steep Slope/High Elev. & Pkwy	

Created By: Buncombe County Planning
 Date: November 5, 2013