

Teresa S. Beeman

Map 1: Topography

Requested Zoning:

- Residential District R-3

Current Zoning:

- Residential District R-2

Staff Recommendation:

- Approval

Planning Board

Recommendation:

- Approval



Teresa S. Beeman
Map Amendment

Case Number: ZPH2013-00020

Approximate Property Size: 0.89 acres

Application Date: August 7, 2013

Planning Board Hearing Date: September 9, 2013

Created By: Buncombe County Planning
Date: August 22, 2013

Teresa S. Beeman

Map 2: Aerial

Requested Zoning:

- Residential District R-3

Current Zoning:

- Residential District R-2

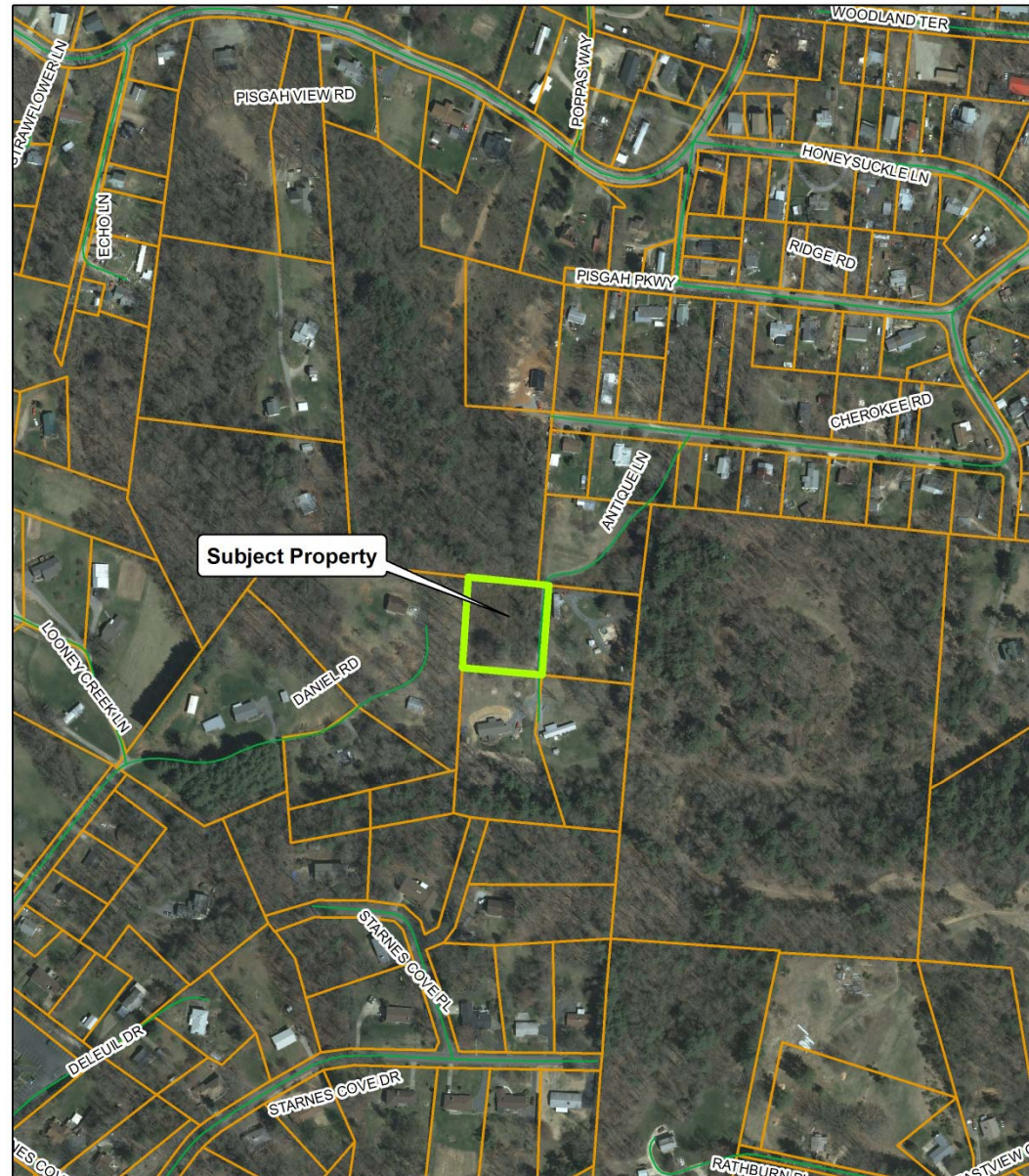
Staff Recommendation:

- Approval

Planning Board

Recommendation:

- Approval



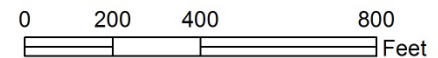
Teresa S. Beeman
Map Amendment

Case Number: ZPH2013-00020

Approximate Property Size: 0.89 acres

Application Date: August 7, 2013

Planning Board Hearing Date: September 9, 2013



Created By: Buncombe County Planning
Date: August 22, 2013

Teresa S. Beeman

Map 3: Zoning

Requested Zoning:

- Residential District R-3

Current Zoning:

- Residential District R-2

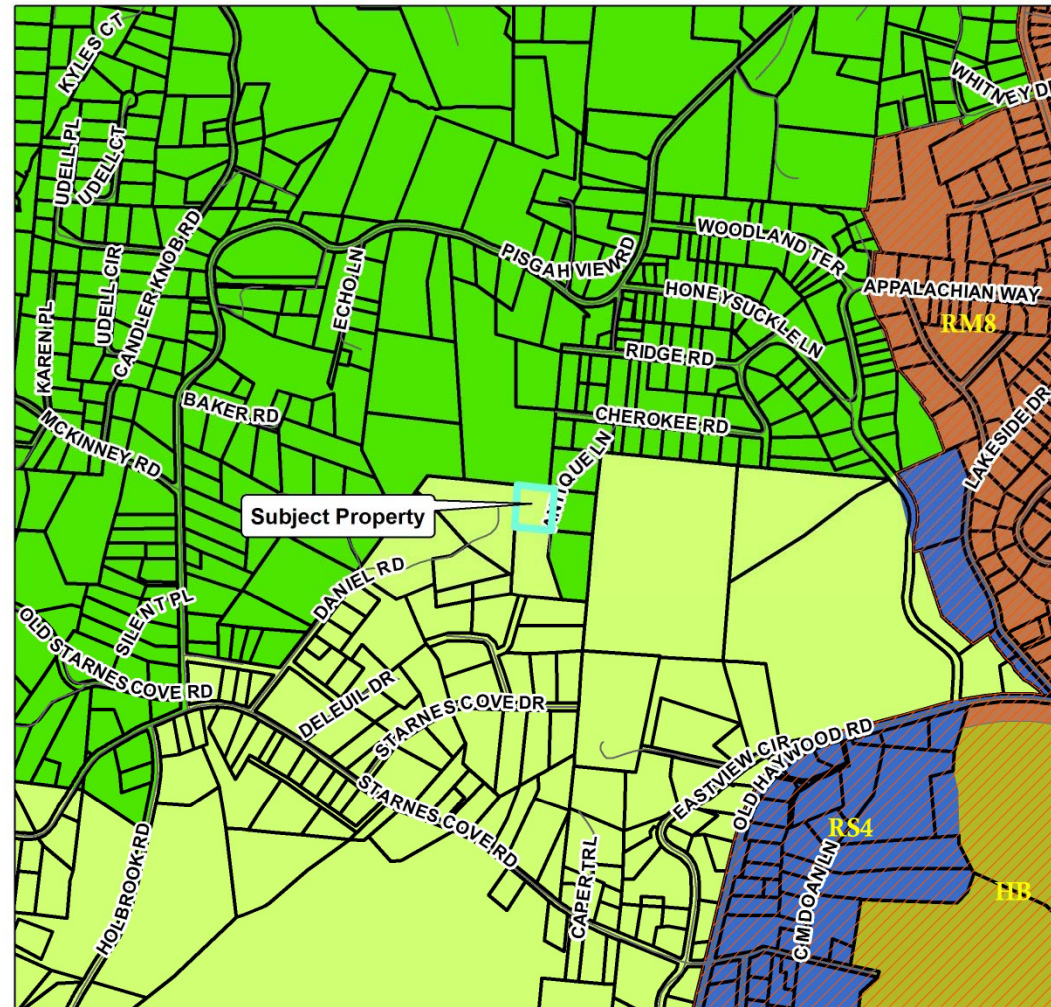
Staff Recommendation:

- Approval

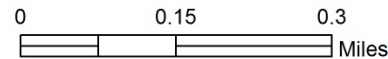
Planning Board

Recommendation:

- Approval



Teresa S. Beeman Map Amendment



Zoning Districts		Zoning Overlays	
	BDM		OU
	CS		PS
	EMP		R-1
	NS		R-2
			R-3
			R-LD
			Blue Ridge Parkway Overlay
			Protected Ridge Overlay
			Protected Ridge & Parkway
			Steep Slope/High Elev.
			Steep Slope/High Elev. & Pkwy

Case Number: ZPH2013-00020
 Approximate Property Size: 0.89 acres
 Application Date: August 7, 2013
 Planning Board Hearing Date: September 9, 2013



Created By: Buncombe County Planning
 Date: August 22, 2013